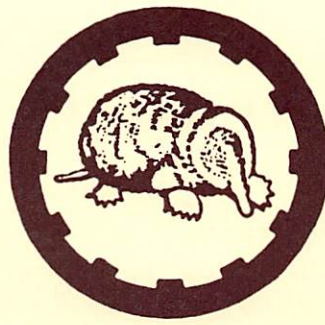


NEWS BULLETIN

AN ASSOCIATION OF INDIVIDUALS

HOLING



OF THE MOLES

ENGAGED IN HEAVY CONSTRUCTION

THROUGH

JULY, 1999

NEW LIFE MEMBER



President **RAYMOND R. ONEGLIA** presents Life Membership Certificate to **GEORGE A. FOX** at May 5th Business Meeting.

Article II Section 7 of The Moles By-Laws contains the following:

Life Members - Members who have had membership in the Association for forty years on the May 1st of the year their fortieth anniversary as members occurs shall be declared Life Members and be relieved of the further payment of dues in the Association. While this pertains to all members having reached their fortieth anniversary, only active dues paying members at the time they are declared Life Members shall retain the privileges they had while paying dues. Emeritus Members will retain only the privileges they are entitled to as Emeritus Members. All Life Members will receive a certificate and have the designation after their names in The Moles' roster.

GEORGE A. FOX reached this distinguished class of membership as of May 1, 1999 and was presented his Life Membership Certificate at the May 5th Business Meeting. George, 1979 Recipient of The Moles Member Award, spent his career with Grow Construction Company and continues to remain active in industry activities.

In addition to GEORGE FOX, there are twelve other Life members: WELDON S. BOOTH, JAMES C. CODELL, JR., JOHN J. DI MENNA, ROBERT S. GATES, CHARLES L. GUILD, VICTOR B. HERTSLET, GAIL B. KNIGHT, DANIEL M. LAZAR, WILMOT A. MILBURY, JOHN J. MURPHY, GERARD A. NEUMANN and JACK T. WALLE.

CLAMBAKE

TUESDAY
AUGUST 3, 1999

TRIVERS ISLAND
PELHAM, NY

REGISTRATION
11:30A.M. TO 5:30 P.M.

LUNCH
11:30A.M. TO 2:00 PM.

OUTDOOR GAMES
1:30 P.M. to 5 P.M.

SOFTBALL GAME
3 P.M. to 5 P.M.

BOAT RIDES
2 P.M. to 5 P.M.

SWIMMING and TENNIS
ALL DAY

FREE BEER ALL DAY

SURF & TURF DINNER
SERVED AT 6 P.M.

GOLF AT LEEWOOD GOLF
CLUB IN A.M.

ACCOMMODATIONS
AVAILABLE AT
RENAISSANCE
WESTCHESTER HOTEL

A MOMENT OF SILENCE

RALPH J. ANGAROLA died on June 8, 1999 at the age of 60 after a long battle with leukemia. Ralph graduated from Manhattan College in 1960 with a Civil Engineering Degree. Ralph worked for a number of contractors and engineering companies during his career which was principally in underground work. Among his employers were Poirier and McLane Corporation, Perini Corporation, Mason & Hanger - Silas Mason Company, Jenny Engineering Corporation and Sverdrup Corporation. Ralph always wore his membership in The Moles as a badge of honor and he will be missed by all of his friends and colleagues.

UPDATE ON SCHOLARSHIP FUND

For the forthcoming academic year eight (8) three thousand dollar (\$3,000.00) Moles Scholarships are being awarded to students at the following colleges:

City College of New York
University of Connecticut
Cornell University
Lehigh University
Manhattan College
NJIT
Polytechnic University
Rensselaer

Since the report in the April issue of *Holing Through*, we have received a \$25,000.00 contribution to the Scholarship Fund from Yonkers Contracting Company and others have made contributions against their previous pledges.

The Scholarship Fund Raising Committee is continuing its efforts to enlist additional contributions in order to reach our \$2,000,000 goal.

NEWS OF MEMBERS

WILLIAM BAROTTI (Clark Construction Group) retired in May as Senior Vice President. His construction career encompassed 22 years with Hendrickson Brothers, 6 years with Horn Construction Company and 22 years with Clark.....**THOMAS J. KING** (Schiavone Construction Company) was honored by the Cardinal's Committee of the Laity at a dinner on May 21st at the New York Hilton Hotel. He was also recently installed as the President of the Genral Contractors Association of New York City. Tom also serves as Second Vice President of Associated General Contractors of New Jersey.....**JOSEPH MC GOWAN** (Granite Construction Company) has been re-elected Vice Chairman of the American Road and Transportation Builders Association.....**DAVID B. PERINI** (Perini Corporation) retired as Chairman of the Board after serving in that position for 27 years. He will continue as a Director of the Company..... **CARL PETRILLO** (Yonkers Contracting Company) was presented the New Jersey State AFL-CIO 1999 Business Award.....**CHARLES H. THORNTON** (ThorntonTomasetti Engineers) was elected an Honorary Member of the American Society of Civil Engineers..... Another aquisition by Slattery Skanska - **THE GOTTLIEB GROUP**.

WE NEED YOUR HELP TO MAKE THIS COLUMN MEANINGFUL AND OF INTEREST TO OUR MEMBERS. PLEASE PROVIDE INFORMATION ABOUT YOURSELF OR YOUR COLLEAGUES THAT CAN BE INCLUDED

WORDS OF WISDOM

*Riches prick us with a thousand troubles in getting them,
as many cares in preserving them, and yet more anxiety
in spending them, and with grief in losing them*

St. Francis of Assisi

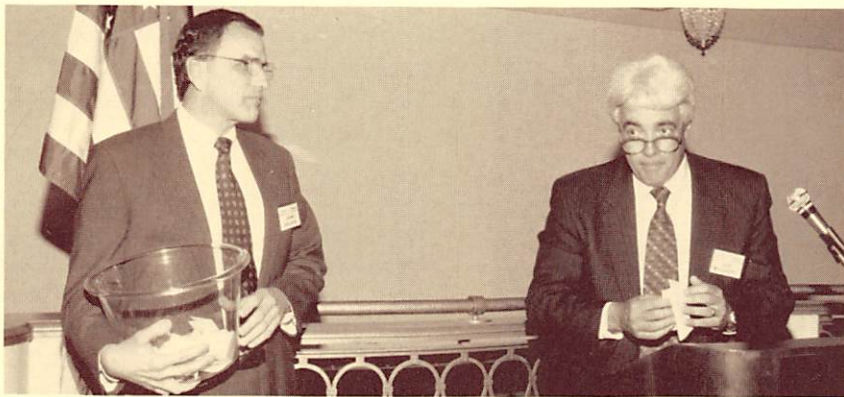
THE MOLES

Holing Through is published by The Moles three times a year: April, July and November. The Moles is an organization of people engaged in Heavy Construction. Its purpose is to promote better acquaintance among individuals engaged in heavy construction to the end:

- That past and future friendships and a spirit of fraternization among the members be fostered.
- That meetings and other gatherings be held to exchange construction information and promote good fellowship among the members.
- That advancement of the Construction art be achieved, and outstanding performance be recognized through awards and otherwise.
- That the youth of our country be encouraged to participate in heavy construction by a multi purpose program of education in cooperation with engineering colleges and other associations.
- That, in the public interest, standards of construction shall be raised both as to engineering and business ethics.

The Moles' office is located at 577 Chestnut Ridge Road, Woodcliff Lake, New Jersey 07675. Telephone: 201-930-1923 Fax: 201-930-8501 Executive Director: Gerard J. Carty, P.E.

ANNUAL BUSINESS MEETING



Joe Malandro reads winner of McAlinden Scholarship while John Kolaya awaits next drawing.

The sixty-first Annual Business Meeting of The Moles was held at The New York Hilton Hotel on Wednesday evening, May 5, 1999.

GENE FASULLO, former Chief Engineer of The Port Authority, presented a very interesting talk on the George Washington Bridge. Gene recounted the history of the bridge from its origins right up to the present day. This lecture, a relatively new feature presented at the May and November Member Dinners, has been well received by the membership with approximately 125 present for this portion of the evenings program.

After the traditional cocktail hour the members went into the Trianon Ballroom for dinner. One of the highlights of the evening was the welcoming and introduction of the new members - twelve of the thirteen new members were present (see photo on page 4). George Fox was present to receive his Life Member Certificate (see photo on front page).

Reports were given by all of the Committee Chairmen. Part of the report of the Education Committee included the drawing of the McAlinden Scholarship winners. Children and grandchildren of the following Moles members were each winners of \$2,000.00 scholarships: Art Blattner, Richard Brisch, Howard Gould, John Kolaya, Jim Lammie, Norm Nadel, George Neumann and Sidney Snider.

This meeting completed the terms of Edward Cruz, Secretary; Al Brand, Chairman of the Program Committee; George Neumann, Chairman of the Membership Committee and Trustees Bill Murphy and Don Unbekant.

The Officers and new Trustees were then introduced. The new Trustees are Andrew Catapano, Tom King, Zohrab Marashlian and Tony Mazzo.

Unfortunately, retiring President John Donohe was not able to be present at the Dinner because of illness (subsequently requiring a gallbladder operation - only something so serious could keep John away) but incoming President Ray Oneglia thanked John for the fine job he had done over the past year.

There was a fine turn out of members at the meeting and they continued to socialize after the adjournment of the formal activities.

PRESIDENT APPOINTS COMMITTEE MEMBERS

The following Committee assignments have been made for the current year.

AWARD COMMITTEE- Peter S. Schneidkraut, Chairman, Edward Cruz, Vice Chairman, Howard M. Mager and Joseph C. McGowan, Members at Large.

MEMBERSHIP COMMITTEE - Zohrab B. Marashlian, Chairman, John A. Rupich, Vice Chairman, Arthur N. Aubin, Louis S. D'Amico, Joseph M. McGoldrick, John F. McNamara III, Patrick D. Mullen, Edward S. Plotkin, Dominick M. Servedio, and Harry Stricker

PROGRAM COMMITTEE - Andrew F. Catapano, Chairman, Lawrence B. Nadel, Vice Chairman, Michael M. Blendy, Thomas P. Condrin, Francis P. DiMenna, Jr., Thomas Iovino, Joseph M. McCann, Stephen G. Price, Walter J. Reichert, John G. Ruggerio and George G. Searle

FINANCE COMMITTEE - Denis P. McInerny, Chairman, Joseph D. Guertin, Jr., Michael R. Huie, Gerard M. Kenny, Francis J. Lombardi and Thomas B. Treacy

EDUCATION COMMITTEE - John L. Kolaya, Chairman, Gary A. Almeraris, Vice Chairman, Theodore J. Civetta, Jr., Richard H. DiLouie, Thomas A. Gelormino, Joseph D. Malandro, Michael M. Mc Hugh, William V. McGuinness III and Joel Moskowitz

PUBLICITY COMMITTEE - Lawrence H. Lehman, Chairman, Ronald A. Wiss, Vice Chairman, Henry N. Christensen, James E. Kelley, Jr., David M. Oneglia, Robert L. Polvi, Gerard T. Schreiber, Donald N. Weisstuch

NEW MEMBERS



Left to Right: Front Row - Paul S. Pedini, Sheldon E. Roth, Gary W. Winsper, Kenneth L. Anderson, Carl J. Cosenzo: Back Row - John F. Pegno, John R. Roma, Thomas J. Clemens, Robert J. MacKenna, Brian C. Kaub, Donald M. Cross.

KENNETH L. ANDERSON is the Treasurer of Modern Continental Construction Company and along with his friend and Moles' member, Les Marino, founded the company in 1967.

STEPHEN J. BARLOW is a Civil Engineering graduate of Worcester Polytechnical Institute and has been with J.F. White Contracting Corporation since 1981 currently serves as Chief Operating Officer.

THOMAS J. CLEMENS is Executive Vice President of American Commercial, Inc., the successor company to Commercial Shearing. The company is the leading company in the U.S. for the design and fabrication of tunnel support systems.

CARL J. COSENZO is Executive Vice President of Schiavone Construction Company, where he is responsible for all estimating, purchasing and overall management of the company.

DONALD M. CROSS is Executive

Vice President of The Lane Construction Corporation where he is responsible for bidding, administration of contracts and supervision of the equipment fleet, as well as participation in Joint Venture projects.

BRIAN C. KAUB is a Civil Engineering graduate of Michigan Tech University and Area Manager of Granite Construction Company. Prior to joining Granite in 1994 he was with Perini and Al Johnson Construction Company.

ROBERT J. MAC KENNA is a Civil Engineering Graduate of the University of Maine and is Project Manager for Spearin, Preston & Burrows. Previously he was a Principal of George W. Rogers Construction Corporation.

PAUL S. PEDINI is a Civil Engineering graduate of Tufts University and is Vice President of Modern Continental Construction Company where he has been employed since 1983. he previously worked for Slattery Associates.

JOHN E. PEGNO is President of A.J. Pegno Construction Corporation and currently serves as Treasurer of The General Contractors Association of New York City.

JOHN R. ROMA serves as Vice President of New England Foundation Company. He holds a Civil Engineering Degree from Northeastern University, a Master in Civil Engineering from MIT and an MBA from Northeastern University.

SHELDON E. ROTH is Director of Preconstruction Services for Slattery Skanska, Inc. He earned a Civil Engineering Degree from City College in 1968.

PETER TULLY is President of Tully Construction Company and is the third generation of the family to be a Moles member. He is a graduate of St. John's University and holds a Law Degree from Hofstra University.

GARY W. WINSPER is Project Executive of Slattery Skanska for the JFK Light Rail System Design Build Operate and Maintain Contract. He earned a Civil Engineering Degree from City College and a Masters Degree from Catholic University.

PERINI DECISION

(Continued from Page 5)

accrual of all claims at the completion of the contract.

While the decision is welcomed, it is regrettable that the Court did not decide that the accrual of claims starts at the completion of the contract since the decision implies that the four (4) month statute of limitations would apply from the date of the breach if the cause of action arose under the "agreement" portion of the contract.

GOOD NEWS FOR PERINI AND THE CONSTRUCTION INDUSTRY

The November 1996 issue of *Holing Through* contained an article prepared by Tom Treacy entitled *CONTROVERSIAL DECISION BY THE COURT*. The decision in question pertained to the application of a four (4) month statute of limitations contained in a New York City Contract covering claims based "upon this agreement." In the earlier decision, the U.S. District Court imposed the short statute of limitations on claims for delay and breach of fundamental obligations of the contract. The District Court started the running of the statute from the date of the issuance of an interim stop order by the City of New York and granted summary judgment for the City.

On Appeal to the Second Circuit, Perini argued that the statute of limitations did not apply to claims brought under the Suspension Clause which was not contained in the "agreement" portion of the contract. In the alternative, Perini argued that if the short statute applied to delay damages, the contract was indivisible and all possible claims accrued only upon "substantial completion" of the construction project.

The Second Circuit held that the four (4) month statute of limitations applied only to claims brought under the "agreement" portion of the contract. It vacated the District Court's Decision and remanded the case for further consideration.

Because the Circuit Court decided that the short statute of limitations did not apply to the causes of action for delay damages, it did not express any opinion on Perini's argument regarding the indivisibility of the contract and the

THE MOLES MEMBERSHIP PROCESS

The By-Laws and Codes of Procedure of the Moles (which each member receives on becoming a member of The Moles) sets forth the organization of The Moles and the procedure for the admission of new members. Total active membership in The Moles is currently established at 538 active members. Besides active membership, there are four other categories of membership, as follows: Emeritus, Life Member Emeritus, Life Member and Honorary. There are no limits established as to the number of members in these categories. The article on page 1 of this issue describes how one becomes a Life Member and Life Member Emeritus. Honorary Membership is customarily bestowed upon the Non Member Moles Award Recipients and the Principal Speaker at the Awards Dinner.

The Code of Procedure states "... to be elected a Member Emeritus, the member's membership must be of long standing, and ample evidence must be available to show that the member has retired from active participation in the heavy construction industry." The Membership Committee considers long standing to be a membership of approximately ten years.

There are four categories of active membership in The Moles; Heavy Construction (H.C.), Engineering (ENG.), Sales Representative (S.R.) and Associated Occupations (A.O.). The number of members in each of these categories is currently established as follows: H.C. - 397; ENG. - 80; S.R. - 42; A.O. - 19. There has not been a problem for qualified candidates to be admitted to the H.C., S.R. and A.O. categories. However, in recent years there has been substantially more qualified candidates nominated for membership in the ENG. category than there are openings available.

To address this situation, President Oneglia has appointed a special committee to study this situation. The committee consists of John Donohoe (Chairman), George Neumann, (Vice Chairman), Melvin Febesh, Zohrab Marshlian, Norman Nadel, George Tamaro and Charles Trainor. The Committee has already had a meeting, plans to meet again in July and expects to have its report ready for the Executive Committee at its September 8th meeting.

Candidates for membership must be nominated by a Moles member. This is accomplished by submitting Form No. 1 (which can be obtained from The Moles office) and arranging for five letters of reference, preferably from Moles members, who have knowledge of the candidate's work and character. The application then goes before the Membership Committee which decides on the clarification of the candidate into one of the four categories of membership. The candidate is then rated by each member of the Membership Committee on a scale of 0 to 10. Those receiving the highest ratings are then sent to the Executive Committee for rating by that body. Those receiving the highest ratings by the Executive Committee are admitted to membership in April of each year, based on the number of openings then existing.

The success of The Moles depends on the quality of its membership and each Moles member is encouraged by the Membership Committee to be constantly on the lookout for qualified and worthy candidates for membership.

Any questions about the membership process should be directed to the Chairman of the Membership Committee or to the Executive Director.

(Continued on Page 4)

MORE MOLES AND CONSTRUCTION INDUSTRY HISTORY

In the last issue of *Holing Through*, we talked about Harry Morrison receiving the Moles Non -Member Award in 1947 and this led us to Hoover Dam. *American Builders* provides this account of Hoover Dam: “ Hoover, began in 1931, marked the dawn of a new era in heavy construction in the growing West and of a new method of financing large-scale projects. So huge was the Bureau of Reclamation’s undertaking on the Colorado River that no one company had the means or the desire to tackle it alone. Harry Morrison helped provide the solution to the financial hurdle. With the backing of W.H. Wattis as head of Utah Construction, he persuaded leading builders of the West to band together in the joint venture known as Six Companies, Inc. - actually eight companies that pooled their resources and talents to construct the concrete colossus. M-K itself had to borrow a portion of its share of the necessary \$5,000,000 required of the construction group to capitalize the \$49,000,000 project.....Hoover was completed in five years - two years and two months ahead of schedule - and M-K pocketed a profit of about \$1,000,000.”

Hoover dam is ranked as the second highest dam in the United States at 725 ft.- 221 meters (Oroville Dam in California is the highest at 754 ft.) and the 18th highest in the world (Rogun Dam in Tajikistan will be the highest at 335 meters when completed).

Among the partners of Six Companies, Inc., in addition to M-K and Utah, were Bechtel, Kaiser and Shea. Frank Crowe, who was the Superintendent in charge of construction of the dam and considered the premier dam builder of the country, had received the Moles Non Member in 1945.

While Hoover Dam was underway on the Colorado River in Arizona and Nevada another great dam was to begin on the Columbia River in the State of Washington. From the book *THE MIGHTIEST OF THEM ALL: MEMORIES OF GRAND COULEE DAM* by L. Vaughn Downs, we have the following: “Bids were opened June 18, 1934 in Spokane Washington The low bid was made by a joint venture, the principals of which were the Silas Mason Co. of Louisville, Kentucky and New York, the Walsh Construction Company of Davenport, Iowa and the Atkinson- Kier Company of San Francisco and San Diego, The low bid was \$29,339,301.50, about 15% below the Six Companies’ bid.” The bids described here were for the Low Dam.

“Bids were opened (for the High Dam) December 10, 1937 with the joint venture sponsored by the H. J.Kaiser Co., the low bidder at \$34,442,240. The other bidder, Pacific Constructors, Inc., bid almost 23 % higher. The low bidder included the MWAK Co (Silas Mason, Walsh and Atkinson-Kier) and the Six Companies (which had constructed Boulder/Hoover Dam). These latter joint venture firms were Morrison-Knudsen Co., Henry J. Kaiser, Utah Construction Co., J.F. Shea Co., McDonald and Kahn Co., and Pacific Bridge Co.” EDITORS QUESTION: What happened to Bechtel which was one of the major partner in Six Companies on Hoover Dam? A prize to the Moles’ member who can clarify this.

(Grand Coulee Dam is still ranked as one of the largest hydroelectric plants in the world with a current generating capacity of 6,474 MW and a planned capacity of 10,830 MW. There are only two hydroelectric plants currently larger in the world today - Guri Dam in Venezuela with a capacity of 10,300 MW and Itaipu Dam in Brazil and Paraguay with a generating capacity of 7,400 MW. Three Gorges Dam in China is planned to have a generating capacity of 20,000 MW.)

So we see what took place in the 1930s - with the advent of Hoover Dam and Grand Coulee Dam, the construction companies that had been performing lesser size projects joined together to form joint ventures to undertake projects that they were not capable of doing on an individual basis.

Many of the names of that era are gone: Utah Construction Company, Henry J. Kaiser, Walsh Construction Company, and Silas Mason. Still active are Bechtel, J.F. Shea, Morrison Knudsen and Guy F Atkinson Company (now part of the Clark Group).

The Japanese bombing of Pearl Harbor on December 7, 1941 had an immense impact on the United States, the world and also on the U.S. construction industry. Construction companies became involved in the war effort in a number of ways. There was defense related construction in this country; many construction companies became involved in shipbuilding and many were called upon for overseas projects, working almost hand in hand with our military forces.

During the war years, The Moles honored Rear Admiral

(Continued on next page)

MOLES HISTORY

(Continued from previous page)

Ben Moreell with the Non Member Award in 1943 and Lieutenant General Brehon Burke Somervell with the Non Member award in 1944. Moreell was Chief of the Bureau of Yards and Docks and Chief of the Civil Engineers of the U.S. Navy. Somervell as Chief of the Army Service Forces which put him in charge of everything but the actual fighting.

Bringing ourselves back to the 1947 Award Dinner of which we were talking earlier before we got off on Hoover Dam, Grand Coulee Dam and World War II, while Morrison received the Non Member Award, the Member Award went to Thomas Crimmins, then president of Thomas Crimmins Contracting Company. The firm established by his grandfather in 1848 was active in New York City foundation work up to about ten years ago. Thomas Crimmins was succeeded by Holmes Crimmins, President of The Moles in 1955 and Member Award Recipient in 1966. His cousin, Robert Crimmins was President of the Moles in 1967. Many Moles members are alumni of the Crimmins Company. Among them are Jack Walle, Rube Samuels, Al Ward, Bill Collins, Bernie Monahan and John Kolaya. Holmes Crimmins, who is in his 90s, is currently living in Colorado.

On January 10, 1952, Holmes Crimmins, then Chairman of the Membership Committee, wrote a letter to the editor of *Holing Through*. An article containing the letter subsequently appeared in *Holing Through*. The letter is very interesting because it talks not only about the problem of not having openings (at that time the membership was limited to 325 members) for qualified nominees but also provides some history about the membership process. Excerpts are as follows:

MEMBERSHIP COMMITTEE SPEAKS

Growth of waiting list, consisting of well-screened and eminently-qualified heavy construction men, inspires Holmes Crimmins to discuss admission policies.

“Here’s a little background on our membership qualifications:

At the founding of The Moles it was felt that the engineering profession had its societies, the contractors had their associations. But large group of men—such as superintendents, master mechanics, etc., who were a vital part of the construction industry—had no similar place to turn to.

As The Moles grew, other men associated with construction came in. In order to interpret the present requirements the following was offered to the Executive

Committee in 1950 and approved as a guide that the Membership Committee could use in screening:

Younger members should be sought. They should have a reasonably bright future in the heavy construction industry so that they may grow in stature and interest in The Moles.

Those with technical training should be favored because the trend into the future is in that direction. However, to actually have worked in the hole and gained a livelihood that way, should be a basic requirement.”

Moles membership continues to be much prized with many candidates currently waiting for admission. In this regard, at the June 2nd Executive Committee meeting, an Ad Hoc Committee, chaired by Past President John Donohoe and consisting of six additional members, was appointed by the President to review the current membership situation and report back to the Executive Committee at its September 8th meeting with its comments and recommendations.

Once again, returning chronologically to our history, we are in the period of the 1947 Award Dinner. In 1948 the Moles Award Dinner was held at the Roosevelt Hotel with General Raymond A. Wheeler, Chief of Engineers, U.S. Army receiving the Non Member Award and William A. Durkin, President of Walsh Construction Company, receiving the Member Award.

Durkin was born in a small town in Park County, Indiana in 1885. At age 13 he started work as a waterboy with his uncles who were road building contractors. After serving as a laborer, teamster and timekeeper, he became a foreman at age 16. When he was 21 he started railroad construction work on the New York Central Railroad between Indianapolis and Terra Haute, Indiana. He continued working for the railroads working his way through the positions of chainman, rodman and instrument man and became involved in bridge construction.

In 1912, he joined Walsh Construction Company as a foreman and advanced to superintendent and general superintendent. From 1924 to 1938 he served as Vice President of Walsh with his office in Indianapolis (Walsh’s headquarters at that time was in Davenport, Iowa). Subsequently, Walsh moved its headquarters to New York City and Durkin rose to the position of President. Besides being a part of the Joint Venture that constructed Grand Coulee Dam, Walsh was involved in the construction of Fort Peck Dam in Montana, then and still the largest earth fill dam in the U.S. and currently the second largest in the world behind Tarbella Dam in Pakistan.

Till the next issue of *Holing Through*.

STUDENTS DAY 1999



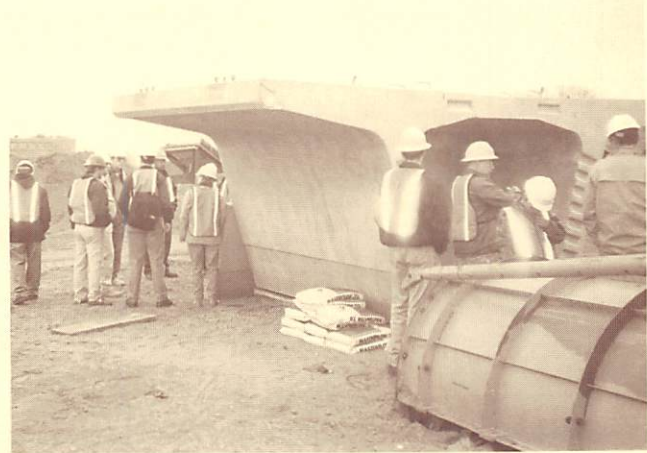
Students at briefing in Building 208 - Kennedy Airport.



Frank Lombardi of Port Authority welcomes students.



Mike Mc Hugh explaining work to students.



Students inspecting pre-cast mono rail section.

After having Moles Students day at the Queens Plaza 63rd Street Subway Project for four years, it was time to move on to another project. Besides, all of the work there has been completed and there was no construction to go back to. That was a great project and every year we saw something different and we thank all of our contractors and members who made those visits such a great success.

The Education Committee was successful in finding another mega project to visit; this one being the Light Rail Project at Kennedy Airport. An important part of a successful Student's Day is the need for an adequate facility where the students can assemble and where the explanation of the project can be presented. At Kennedy, the Committee was fortunate to have the assistance of Moles members Frank Lombardi and Tom Groark of the Port Authority. They not only provided an assembly place to meet (Building 208 - former Pan Am hangar); a number of buses to take the students around the site; and an excellent description of the overall project by Program Director Tony Cracchiolo.

A light mist did not dampen the enthusiasm of the 230 students and faculty members present. John Kolaya and his Committee had two dry runs before the actual Students day on Friday, April 16th and everything went smoothly. Slattery Skanska is the prime contractor for this \$ 1 Billion Design-Build Project. Work involves the construction of a mono-rail around the airport, out to the long term parking lot and up the middle of the Van Wyck Expressway to Jamaica Station. The Scope of work also includes the furnishing and operation of the light rail equipment.

Besides Slattery Skanska, other Moles member firms involved in the work include E.E. Cruz, Moretrench American, Trvei Icos, Halmar and Underpinning and Foundation. Thanks to all participants (including those who donated the hard hats) for making this day so successful - all Moles members can be proud of what was accomplished.