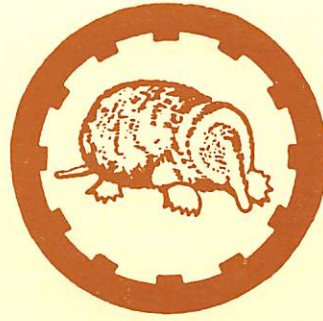


NEWS BULLETIN

AN ASSOCIATION OF INDIVIDUALS

HOLING



OF THE MOLES

ENGAGED IN HEAVY CONSTRUCTION

THROUGH

JULY, 1993

ANNUAL BUSINESS MEETING



The Moles' 1993/94 President, ELMER A. RICHARDS presents retiring President, GEORGE B. SEARLE with traditional Past Presidents' Pin and Certificate after receiving the gavel on May 5, 1993.

Two Hundred Thirty members were present for the Fifty-Fifth Annual Business Meeting & Dinner held on May 5th at The New York Hilton Hotel to extend congratulations to George Searle for his excellent performance as President this past year and to extend well wishes to Elmer Richards the incoming President. Twenty-Seven of the thirty new members were in attendance. After the traditional cocktail hour and super dinner, President Searle called the meeting to order. He welcomed everyone for the last time as President of The Moles, expressed regrets for those who had advised they could not attend; called a "moment of silence" for those members who had passed away since the last Annual Business Meeting; and introduced the new members elected at the April 6th Executive Committee Meeting. See pages 4, 5, 6 and 7 for brief bios on all 30. Photos of those who were present appear on page 8. President Searle presented Life (40 Year) Member Certificates to: Weldon S. "Bob" Booth, James C. Codell, Jr., and B/G Benjamin B. Talley, U.S.A. (Ret.). Others who could not be present but will receive their certificates by UPS are: Edward J. Quirin and William M. Sheehan.

Reports were submitted by Treasurer, Daniel J. Rago and Secretary, Joseph J. Diehl. Joe having served faithfully as Secretary for three years (1990, 91, 92) was presented with a certificate paying tribute to Joe. Other

(Continued on Next Page)

CLAMBAKE

•
TUESDAY
AUGUST 3, 1993

•
TRAVERS ISLAND
PELHAM, N.Y.

•
REGISTRATION
11 A.M. to 6 P.M.

LUNCH
11:30 A.M. to 2 P.M.

WHEEL OF FORTUNE
DRAWING
2:30 P.M. and 4:30 P.M.

OUTDOOR GAMES
1 P.M. to 5 P.M.

SOFTBALL GAME
3 P.M. to 5 P.M.

FREE BEER ALL DAY

SWIMMING and TENNIS
ALL DAY

SURF & TURF DINNER
SERVED PROMPTLY at 6:30 P.M.

PRIZE AWARDS
AFTER DINNER

ANNUAL BUSINESS MEETING

(Continued from Page 1)

reports were submitted by the Chairmen of the various committees.

President Searle introduced the newly elected Officers and Trustees. Starting with the Trustees to serve three (3) year terms, he introduced: LOUIS S. D'AMICO - Slattery Associates, Inc.; LEON C. HERON, JR. - Kiewit Construction Company; JOSEPH M. MARTOSELLA - Buckley & Company, Inc.; and EDWARD S. PLOTKIN - Commissioner of Public Works, Westchester County. The Officers serving a one (1) year term 1993/94 are as follows: Sergeant-at-Arms, FRANK D. COONEY - County Asphalt Inc.; Secretary, MELVIN FEBESH - Urban Substructures, Inc.; Treasurer, DANIEL J. RAGO - Yonkers Contracting Co., Inc.; Second Vice President, GERARD A. NEUMANN, JR. - Spearin, Preston & Burrows, Inc.; First Vice President, THOMAS E. DAILEY - Perini Corporation; and President, ELMER A. RICHARDS - Mueser Rutledge Consulting Engineers.

As the gavel was turned over to President Elmer A. Richards, he performed his first official act by presenting retiring President George B. Searle the traditional Past Presidents' Pin and Certificate.

Outgoing President Searle responded and turned the meeting back to President Richards who spoke briefly.

Remarks of Outgoing President **GEORGE B. SEARLE**

"It has been an honor for me to serve as President of this great organization. I take great pride in being afforded that honor. It does not seem like a whole year since I took over the gavel from BOB KOCH. However, it has been an eventful year capped off by the presentation of The Moles' Awards to two great gentlemen."

"I want the new members to recognize that they have joined an organization that has, as its membership, the cream of the construction and engineering industry. With their admission, the high standard will continue. The Moles is made up of highly competitive and truly dedicated professionals."

"I would like to thank the Committee Chairmen and their Committees for all their help last year. I would like to give special thanks to the Officers and the Executive Committee. A lot of hard work goes into the activities of this organization. The participation of the membership is a necessary ingredient."

"Of course, the one ingredient that makes it all work is ARLINE GALLAGHER. I want to personally thank her for guiding me through this year. We all know that the real Moles work is done by Arline."

"Every year, The Moles' Officers and those in line to be Officers, have great concern that Arline will decide to retire during their terms. When I accepted the Presidency, I stated that I prayed to god that she would accept the challenge and stay around during my term. Well, she has and I thank her for doing that."

"However, ELMER RICHARDS is not so fortunate. Arline has given us notice that she would like to retire this year. The actual time will be sometime after the Annual Clambake."

"I know that we will all miss Arline's guidance, However, we must remember that she is our first female member and will still remain active in our organization. I am sure she will still be available when needed."

"If Arline will come up here, I would like to present her with a small token of our gratitude for her 29 years of service to The Moles. While she is coming over here, please let me read what it says."

'In recognition of your many years of service with The Moles and as a gift on your retirement, the members of The Moles have arranged a travel fund for you. We are providing with this letter a variety of brochures outlining the many travel opportunities which you may consider as part of your enjoyment of this gift. Wishing you many happy days of travel and relaxation.'

"Thanks again, Arline, for everything. I now turn the meeting over to your new President, ELMER A. RICHARDS.



JOSEPH J. DIEHL receives tribute for his dedicated service as Secretary, (May 1, 1990 to April 30, 1993) from President, GEORGE B. SEARLE.

ARLINE SAYS "THANKS"

For all the kind words you all have had for me over the years; and for the "great retirement gift"—I want to thank all The Moles from my "achy breaky heart." — See you all at the Clambake.

President Richards' Response

"As you can see from the vote tabulations, it was a difficult election. If it wasn't for the sizeable contributions made by some of you, it might not have been possible to overcome some of my competitors."

"But seriously, I am honored by your selection of me to be your President. The list of Past Presidents of The Moles include many giants of the construction industry. I feel quite humble to be included with this group."

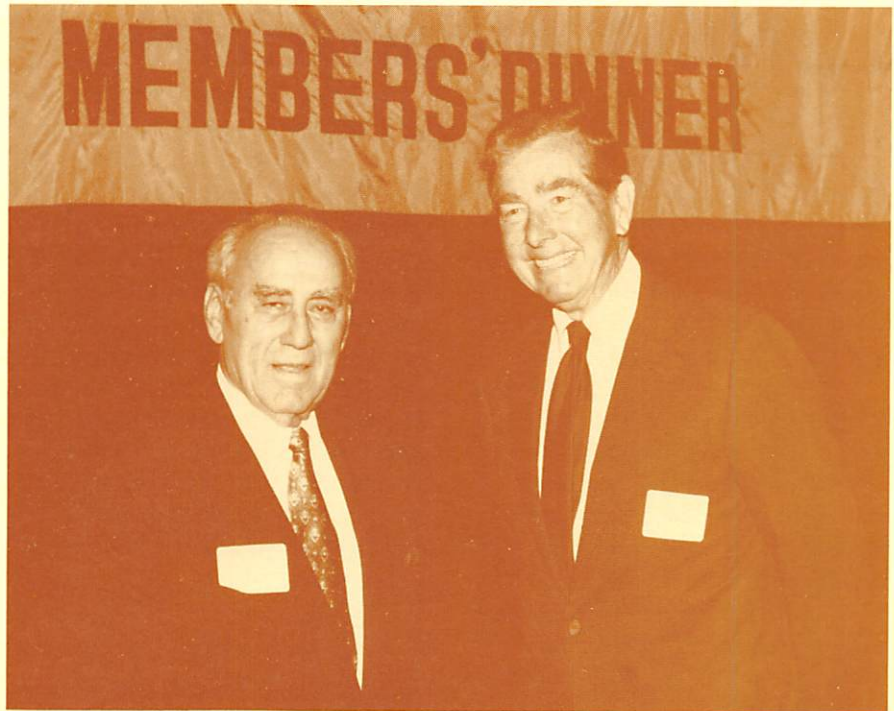
"Like all my predecessors I have been fully indoctrinated in my duties by our retiring Executive Secretary – Arline Gallagher. With this background it will be very difficult to stumble."

"During the many years that I have attended the Annual Business Meetings and Members' Dinners I have been impressed with their brevity. I will do my best to continue this tradition, as I too have to catch a train."

ARNOLD E. THURBER died at his summer home at Lakewood, N.Y. He was 84.

"Thurb" as he was known in the industry was born in Boston, NY and attended Ohio Northern University where he earned a BSCE in 1929. The year immediately after graduation was spent as an instructor of Civil Engineering at Ohio Northern. He also worked for the NY State Dept of Public Works; the New York State Transit Commission and the Faircroft Engineering Corporation before joining J. Rich Steers, Inc., in 1937.

He became a member of The Moles in 1950 and served on the Finance Committee and was it's Chairman. Later he was Treasurer of The Moles. During this period he was Vice President and Chief Engineer of Steers. While with Steers he was actively engaged in construction of the Navy Yard Dry Docks during World War II and later other waterfront work, treatment plants, bridges and general heavy construction work. He retired as Executive Vice President.



JAMES C. CODELL, JR. (left) and WELDON S. BOOTH attend Annual Business Meeting & Dinner and receive their Life Membership Certificates.

NEW ROLE FOR CARTY

On June 1, 1993, the Executive Committee at their first meeting of the new year approved the Headquarters Committee's selection of GERARD J. CARTY to succeed ARLINE F. GALLAGHER as Executive Secretary of The Moles.

Gerry is well known to The Moles members and others in the industry. He graduated Cum Laude from the University of Notre Dame with a B.S. in Civil Engineering in 1953 and immediately joined Johnson Drake & Piper.

He recently retired from Walsh Construction Company where he had been employed since 1968 rising through the ranks to progressively responsible positions including Senior Vice President & Chief Engineer.

Gerry has served The Moles as a Committee Member, Trustee, Chairman of the Publicity and Award Committees, Second and First Vice President, President and was the 1991 Moles' Member Award Recipient.



NEW MEMBERS

LEWIS E. AKIN is President of Chicago Bridge & Iron Company headquartered in Oak Brook, IL. He has been affiliated with CBI since graduating from Vanderbilt University where he earned a BSME in 1959 and a Masters in Nuclear Engineering in 1960. The firm closely connected with the heavy construction industry doing design, engineer, fabrication, and construction of metal plate structures installing penstock, and turbine generators on major hydro projects throughout the U.S. and the world. This firm is one of only a few organizations possessing the technical and managerial talents to perform work of their specialty.

JAMES J. BELL is President of Bell Civil Inc., one of the Bell Companies, specializing in underground utility and infrastructure work. A few of the recent major projects Bill has been involved with for the Company are: FBI Fingerprint Headquarters which included the moving of 2 million cubic yards of earth, building a fifty foot earthen dam and installation of all utilities; Watertown Water Treatment Plant, and Site infrastructure installation at Ft. Drum.

DAVID W. BJORSON is President and CEO of Commercial Pantex Sika, Inc., headquartered in Louisville, KY. The firm, formerly Commercial Shearing, is one of the leading suppliers of support systems for underground tunnel and mining excavations. David has been active in the business since graduating from Ohio University in 1971.

EDWARD J. BURKE, III, is Vice President, Marketing & Sales for ETI Explosives Technologies International Inc. His technical expertise in the proper use of explosives in tunneling, road construction, utility, and pipeline construction as well as large power projects and dredging has been a valuable asset and has been welcomed by many contractors.

JAY E. CARLSON is Senior Vice President with S.A. Healy Company, prominent tunnel contractors headquartered in McCook, IL. In this capacity his responsibilities encompass management of major underground projects as well as estimating and bidding on state, and federal contracts. His entire thirty year career has been spent in underground construction, commencing with hands-on experience on to top management and executive roles with several top-notch national constructors.

EVARISTO CRUZ, JR. (Evarett) joined Cruz Construction Corp., in 1976 when he graduated with an engineering degree from New Jersey Institute of Technology. Since then he has held various positions including Field Engineer, Superintendent, Project Manager, and Estimator. In 1980, he became an Officer and Vice President of the firm, and in 1984 added the title of Chief Executive Officer. Evarett's participation in professional societies, and industry related organizations is too numerous to list, but includes: Utility and Transportation Contractors Association of NJ, Associated General Contractors of NY, National Society of Professional Engineers, and American Society of Civil Engineers. He is a member of the American Arbitration Association's Panel of Arbitrators; a Charter Member of the American Underground-Space Association and the North American Society of Trenchless Technology.

NORMAN G. DELBRIDGE, JR., is a Senior Consultant and Washington Representative for J.A. Jones Construction Company. Prior to his association with Jones, he had a notable career with the U.S. Army Corps of Engineers, rising to the rank of Major General, and assignment as Deputy Chief of Engineers. He attended Iowa State University and the United States Military Academy, and has a Masters Degree in Civil Engineering.

ANDREW W. D'ANGELO is currently giving of his expertise on the North Channel Bridge being constructed by Yonkers Contracting Co., Inc., and Weeks Marine, Inc., a joint venture. Andy holds a B.C.E. 1952 and an M.S.C.E. 1956, from Brooklyn Polytechnic Institute, and is a licensed Professional Engineer in seven states, and the District of Columbia. His career of nearly 40 years has been intimately involved with engineering marine, and heavy construction projects having worked for Merritt-Chapman & Scott, Murphy Pacific Marine, International Underwater Contractors and other prominent marine contracting firms. He has designed construction plants in both marine and heavy construction such as dams, bridges, etc.

PRAKASH M. DONDE is Vice President of Engineering and Operations for Jenny Engineering Corporation with over 24 years of experience. Prior to his affiliation with Jenny Engineering, he was with the New York City Transit Authority. Prakash, is a highly regarded worldwide tunnel designer/engineer with projects from New York City, Cleveland, Rochester, Milwaukee, Washington, D.C., Taipei, and Singapore to mention a few. He earned a BSCE, Civil Engineering in 1965 from Bombay University, an MSCE Civil Engineering 1967 from the Indian Institute of Technology Bombay, and an MSCE, Structural Engineering 1969 from the South Dakota School of Mines & Technology. He is a Registered Professional Engineer in numerous states and in Singapore.

NEW MEMBERS

JOSEPH S. FINSTON is Chairman of the Board of Kaufman Construction Company, Inc., headquartered in Philadelphia, PA. He has directed the company's accomplishments in completion of all phases of heavy construction contracts. He is a 1950 graduate of the university of Pennsylvania with a BS in Electrical Engineering. He has been with Kaufman since late 1951 where he started as a Field Engineer, and went on to many more responsible positions on major heavy construction projects. He was elected President, and Chief Executive Officer in 1964, and held that position until 1991, when he became Chairman.

EDWARD P. FORTE has recently joined Bauer of America as Manager of Business Development. The firm is an International Specialty Foundation Contractor: and engineers, designs, and manufactures foundation equipment. Prior to this he had experience with prominent foundation contractors including: Laquila Construction Inc., Spencer White & Prentis Inc., and Raymond International Inc. Ed has a BSCE degree from the University of Miami which he earned in 1973.

EUGENE J. FULLAM, III, is Vice President of Twin County Steel Service Inc. The firm fabricates, and erects structural steel, and works closely with many Mole member affiliated contractors. His dad has been a member for thirty-five years. In his capacity of Vice President, Gene, III is responsible for administration of shop fabrication plus hands on control of field erecting projects. These include office buildings, hospitals, schools, sewage treatment facilities, and a powerhouse. The work is coordinated with the underpinning, pile driving, sheeting, bracing, and foundations installed by others.

MICHAEL GAY is a Project Sponsor for Kiewit Construction Co. In this capacity he is responsible for one or more specific underground projects for the firm including, estimate review, off-site supervision, and relations with the owners, and labor unions. A 1972 Civil Engineering graduate from City College of New York, Michael did graduate work at the University of Nebraska at Omaha. Rising through the ranks of the Kiewit organization, specializing in underground construction, he has recently completed the \$200 million Deer Island Outfall Tunnel project in Boston and just prior to that he managed the Anacostia Station/Line project for the Washington Metro.

KENNETH A. ISAACS, Vice President, Construction, for Perini Corporation, is responsible for the oversight and support of all domestic and international construction within the firm. Graduating from Tufts University in 1972, he went on to MIT's Sloan School where he received a Masters in Management. He joined Perini in 1979, and progressed rapidly through increasingly important positions to his current responsibilities.

JOSEPH F. MALANDRO is a project Manager on various heavy highway and tunneling projects throughout New York, and New Jersey for E.E. Cruz & Company, Inc., headquartered in Holmdel, NJ. Joe is a 1970 graduate of New Jersey Institute of Technology where he earned his civil engineering degree. Since then he has had broad and significant experience in all phases of construction and has been involved in some very complex, and difficult work during his career. Prior to his joining E.E. Cruz he worked for Anselmi & Decicco, and for 9 years prior to that he worked for Elson T. Killam Associates as a design engineer.

FRANK MANNA is Senior Vice President for Fischbach & Moore Inc. He is currently involved as both prime and sub-contractor in over \$100,000,000, of electrical installations in heavy construction projects including tunnels and water pollution plants in the Northeast. Frank has his engineering degree from Rensselaer Polytechnic Institute which he earned in 1960 and is registered as a Professional Engineer in New York.

WILLIAM G. MURPHY, JR., is President and a Shareholder of the Halmar Corporation headquartered in Mt. Vernon, NY. Bill has a BS in Civil Engineering from Manhattan College which he earned in 1967 and an MS in Structural Engineering from Virginia Polytechnic Institute & State University which he earned in 1969. Prior to joining Halmar Construction Corp., in 1974, he had worked on numerous projects with Savin Brothers and others. Since joining Halmar he has worked as Superintendent and Project Manager in the field and in the office was primarily involved with estimating. His activities in various industry related organizations are too numerous to list but include the CIC and AGC, ASCE as well as serving as Trustee on various Union Welfare and Pension Funds.

JOHN F.J. NORRIS is Senior Vice President, Director of Construction for the Forest City Ratner Companies. He is a graduate of the Brixton School of Building in England. He is currently responsible for hiring and supervising earth work, and service contractors for construction of buildings, civil facilities, parks, etc., in connection with the Metrotech Center in Brooklyn. Prior to this he was Senior Vice President of Construction for Olympia and York responsible for the construction of the World Financial Center, and other developments in New York, Boston, Chicago, Los Angeles, Orlando and Canada. John is a recognized leader in development of major projects in the NYC area with emphasis on Heavy underground work.

(Continued on Page 6)

NEW MEMBERS

(Continued from Page 5)

THOMAS G. O'DONNELL a Project Manager with Gates Construction Corp., is in charge of estimating and field construction of heavy marine and piling projects. Prior to, and since graduating from New Jersey Institute of Technology in 1979 with a BSCE, and joining Gates six years ago, Tom worked with other Mole affiliated contractors including Schiavone Construction Co., Perini Corporation and Urban Foundation with ever increasing responsibilities. Tom is active in the New Jersey Society of Professional Engineers and the New Jersey Professional Engineers in Construction.

DAVID M. ONEGLIA is Executive Vice President of O & G Industries' Heavy and Highway Division. He graduated from Villanova University in 1974 with a Bachelor of Science Degree in Civil Engineering. At that time he joined O & G and has served in a variety of positions increasing in responsibility to attain his current position. Since 1989 through his efforts as the sole decision-maker of heavy and highway activities, he has expanded operations outside Connecticut exposing O & G to state-of-the-art construction in segmental concrete and stay-cable bridges as well as lock and dam and environmental remediation projects.

JOHN J. O'SULLIVAN is affiliated with Malcolm Pirnie, Inc. He is currently serving as Senior Resident Engineer in charge of reconstruction of portions of the New York City Department of Environmental Protection's Coney Island Sewage Treatment Plant. A civil engineering graduate of Manhattan College Summa Cum Laude in 1979, John has since earned his Master's degree from Polytechnic Institute of New York (1983). His construction experience record covers: design and construction, home and abroad from power plant to bridges, to airports, to sewerage, to piers. John's Dad, Dick, received his 25 Year Membership in The Moles in November 1992 having become a member in 1967.

STEPHEN G. PRICE, Chief Estimator for ABB Susa, Inc., a General Contractor engaged in construction of large civil, environmental or power projects, worldwide. Steve's responsibilities include coordination of estimating, planning, scheduling and execution of projects. Prior to his joining ABB Susa he worked two years with Guy F. Atkinson and ten years with MacLean Grove & Company. Steve received his civil engineering degree from Columbia University in 1978 and was one of The Moles' early Student Award Recipients.

RICHARD J. REDMOND, JR., is a Project Engineer (engineer in charge at the field level) for construction of heavy projects with the Perini Corporation. He recently finished work on the \$54 million rehabilitation of the existing water pollution control plant at Coney Island. He earned a civil engineering degree from Manhattan College in 1980 and was registered in the State of New York as a Professional Engineer in 1992. Rich was brought up in construction as his Dad has been a member of The Moles for nearly twenty years and has worked in underground construction since his graduation also from Manhattan College. Rich also received one of The Moles' early Student Awards.

HY RICHMAN joined Yonkers Contracting Co., Inc., in 1978 and has been in responsible charge of their major heavy construction work in the NY Metropolitan Area as Project Manager then Area Construction Manager. He has been in heavy construction, working for other prominent Mole affiliated contractors since his graduation from City College City University of New York in 1966 where he earned his BS in civil engineering; and during the summers of 1963 through 1965 while still attending College, Hy had his start in construction.

HENRY A. RUSSELL, JR., currently serves as Principal Professional Associate and Senior Project Manager in the area of Tunnel Design and Rehabilitation in the New England Region for Parsons Brinckerhoff, Quade & Douglas Inc. Henry also heads up the Geotechnical Department for the firm in that region. With over twenty-five years of experience with design inspection and remedial work of heavy underground projects, Henry is highly respected as a Geotechnical Engineer and Geologist specializing in difficult foundation problems and tunnel rehabilitation projects. He is recognized as an expert on the use of geotechnical instrumentation for tunnel construction. He has written and published a tunnel inspection handbook which has been used extensively on the Washington Metro and Chicago Transit Authority subways. In these inspection programs he developed some unique repair techniques which solved long standing leakage and settlement problems.

BIRGER SCHMIDT serves as Vice President; Technical Director for Geotechnical Engineering, currently in charge of geotechnical work and interaction hall design for the Superconducting Super Collider in Texas for Parsons Brinckerhoff Quade & Douglas Inc. He earned his civil engineering degree at Danish Technical University in 1960; his masters (1962) and PhD. Geotech/Geology (1969) from the University of Illinois. Dr. Schmidt has 32 years of impressive experience principally in foundation and underground engineering, soil and rock mechanics, and project management. He is the author of more than forty technical publications including the most recent, "Boston Effluent Outfall Tunnel, Risers, and Diffusers".



GERARD T. SCHREIBER is Executive Vice President of the Edward Gray Corporation, a major construction contractor serving the power and metal industries, headquartered in Homewood, IL. Gerry's career includes service as Superintendent, Project Manager, Construction Manager, Vice President, to the position he now holds. He has been active in various trade associations including the Northeast Indiana Contractors and Builders Association of which he is a Past President.


MOHAMAD SHAMSZAD serves as General Manager for Mergentime Corporation in the Washington, D.C. area. He is also the firm's Chief Engineer in charge of all in-house designs including: support of excavation systems and their associated components, ground water control and ground movement/settlement detection systems. He is a graduate of San Jose State University in 1973 where he earned a BS in Civil Engineering and in 1975 a Masters in Structural Engineering.

THOMAS J. WALSH, III, is currently President and General Manager of Walsh Construction Company, a Division of Guy F. Atkinson Company. Tom is a third generation Moles' member since both his father and grandfather were prominent Moles. Thomas J. Walsh received the Member Award in 1955 and Thomas J. Walsh, Jr., was President of The Moles in 1956. Walsh Construction was founded in 1899 by Tom's greatgrandfather. In addition to the Walsh family history of service to, and recognition by, The Moles, Tom, III has all the personal and professional qualifications for membership. He has been with Walsh since 1980 and has worked in the field as Project Manager on major projects on his way up to his current position, including the Mianus River Bridge, Hydro-Kennebec hydro-electric project and the Lewiston Falls hydro-electric project. Tom earned a B.A. (1973) and an MBA (1975) from Tulane University and a Master of Building Construction from the University of Florida in 1980.

President Appoints Committees

President, ELMER RICHARDS has appointed the following members to the various committees of The Moles for the 1993/94 year:

AWARD COMMITTEE – Charles F. Vachris (Charles F. Vachris, P.E. Consulting Engineers) Chairman; Roger J. Ludlam (S.J. Groves & Sons Co.) Vice Chairman; Members-at-large, John F. Donohoe (Moretrench American Corp.) and G. William Gilfillan (Fluor Constructors International Inc.). In addition the Award Committee consists of the Officers, Trustees, Standing Committee Members, Past Presidents and Recipients of the Member Award.

MEMBERSHIP COMMITTEE – Joseph M. Martosella (Buckley & Co., Inc.) Chairman; George P. Neumann (Spearin, Preston & Burrows Inc.) Vice Chairman; Warren H., Anderson (Mueser Rutledge Consulting Engineers), Arthur N. Aubin (Yonkers Contracting Co., Inc.), Eugene F. Casey (Consultant), Salvatore Mancini (Slattery Associates, Inc.), Harry W. Merz (IA Construction Corp.), Remy P. Papp (RPP Construction Consultants), Richard Raab (Grow Tunneling Corp.), Donald E. Unbekant (Perini Corporation). 

PROGRAM COMMITTEE – Leon C. Heron, Jr. (Kiewit Construction Company) Chairman; Alfred H. Brand (Mueser Rutledge Consulting Engineers) Vice Chairman; Alfred J. Beljan (Belbold Contracting Corporation), Andrew F. Catapano (AFC Enterprises), Richard H. DiLouie, Jr. (Kerr Construction Inc.), Gustave Fleischer (Schiavone Construction Co.), Alan Hobelman (George Hyman Construction Co.), Raymond Oneglia (O&G Industries), Peter S. Schneidkraut (Grow Tunneling Corp.), Rudi J. van Leeuwen (Perini Corporation), Donald N. Weisstuch (Sverdrup Corporation).

FINANCE COMMITTEE – Thomas B. Treacy (Buckley, Treacy, Schaffel, Mackey & Abbate) Chairman; Michael Haratunian (STV Group Inc.), James L. Lammie (Parsons Brinckerhoff Inc.), Patrick J. McAward (TAMS Consultants Inc.), V. Dennis Millgard (The Millgard Corporation), J. Patrick Powers (Mueser Rutledge Consulting Engineers).

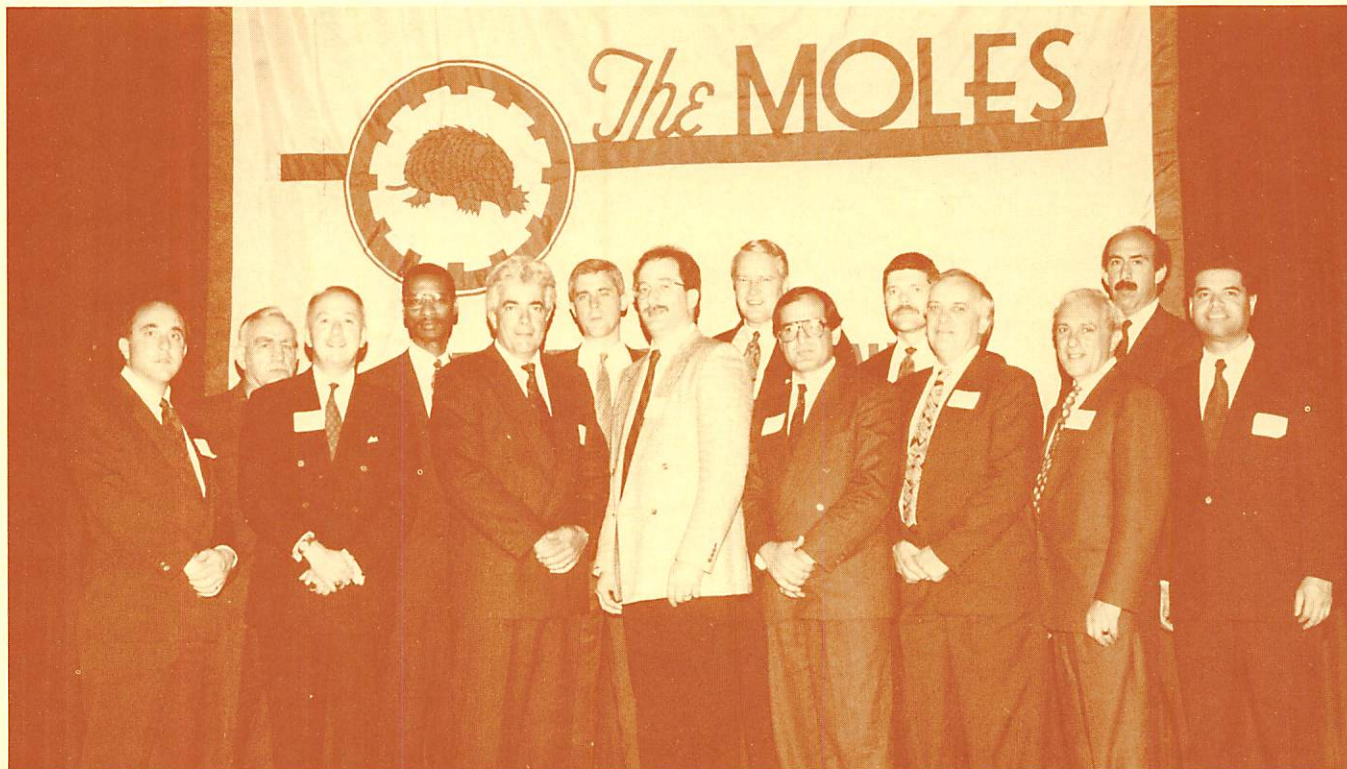
EDUCATION COMMITTEE – George J. Tamaro (Mueser Rutledge Consulting Engineers), Chairman; Anthony J. Mazzo (Urban Substructures Inc.), Vice Chairman; Gary Almeraris (Skanska Tunneling Inc.), John E. Eckart (Kerr Construction Inc.) Daniel M. Hahn (Mueser Rutledge Consulting Engineers), Jesse C. Jameson (Perini Corporation), Robert J. Jenny (Jenny Engineering Corp.), John L. Kolaya (Yonkers Contracting Co., Inc.), Arturo L. Ressi (ICOS Corporation).

NEW MEMBERS (Continued)

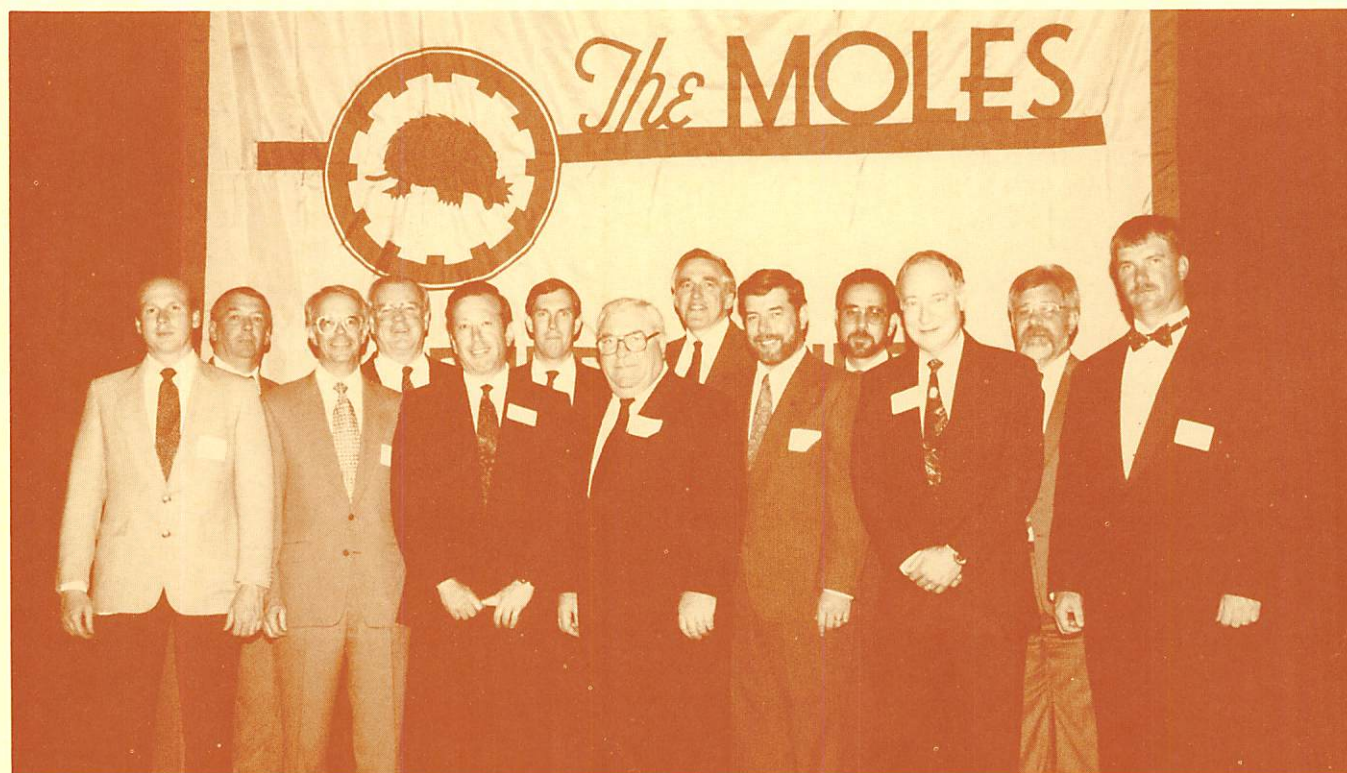
TERRY ZETTLE is Manager of Operations with the J.E. Brenneman Co. In this capacity he handles all their heavy marine construction including: piling, sheeting and shoring, cofferdams and foundation work. He is responsible for bidding, administration and field activities for all contracts. He has been with this firm since 1984 but has construction experience with Raymond International, Spearin Preston & Burrows and others in the 25 years he has been in construction.

PUBLICITY COMMITTEE – Richard J. Halloran (Conduit & Foundation Corp.), Chairman; Francis E. McGahan (Yonkers Contracting Co., Inc.), Vice Chairman; Robert R. Buckley (Buckley & Co. Inc.), John Chow (Perini International Corp.), William J. Custer (Parsons DeLeeuw Inc.), Thomas J. Hendrickson (Rason Asphalt Inc.), Joseph M. McGoldrick (Fitzpatrick, McGoldrick & Associates Inc.), Herbert Wasserman (Slattery Associates, Inc.).

NEW MEMBERS 1993



David M. Oneglia, John F. J. Norris, Edward J. Burke, III, Michael Gay, Joseph F. Malandro, Richard J. Redmond, Jr., Stephen G. Price, David W. Bjorson, Mohamad Shamszad, Eugene J. Fullam, III, Jay E. Carlson, Frank Manna, Kenneth A. Isaacs, Prakash Donde.



John J. O'Sullivan, James J. Bell, William G. Murphy, Gerard T. Schreiber, Hy Richman, Thomas J. Walsh, III, Andrew W. D'Angelo, Lewis E. Akin, Henry A. Russell, Jr., Birger Schmidt, Edward P. Forte, Terry L. Zettle, Thomas G. O'Donnell.

Students Day 1993

Yonkers Contracting Company was host to over 200 college and university students who spent an action-packed day touring the Manhattan Bridge Rehabilitation Project on April 30th.

The Moles Education Committee was well prepared to handle a large crowd as the day's activities began at the brand new, state of the art, Dibner Library Auditorium at Polytechnic University. The Polytechnic campus is integrated into the MetroTech Center office complex about 5 blocks from the Manhattan Bridge in Brooklyn. The impressive facilities were donated for the use of The Moles by university president George Bugliarello. Students received coffee and pastries provided by The Moles; six pages of project literature; and hard hats donated by Moles member companies. In the auditorium the students were greeted by George Tamaro, chairman of the Education Committee; Elmer Richards, incoming president of The Moles and Professor Pagdadis of Polytechnic University.

John Kolaya, Project Manager at the Manhattan Bridge for Yonkers Contracting Company next provided a 30 minute slide lecture about the \$100 Million rehabilitation contract. Students were given a detailed preview of the multifaceted stiffening program which Yonkers is tackling on this 85 year old structure. Many were startled to learn that the bridge has been suffering from a deflection of over four feet at the center of the main span due to live subway loading since 1917.

The weather cooperated with sunny skies in the 70's. This was in contrast to cold rain which was whipped by 40 MPH winds on the walk-through the previous week. The students were divided into seven groups and led across the bridge by Yonkers guides and about 15 Moles, many of whom viewed the 150 foot climb up the face of the anchorage with trepidation. Some of the Moles hadn't been that far above ground in years. They all made it to the top without incident.

The bridge site was alive with activity as the students made their way to the 16 observation points in 2 1/2 hours. A highlight of the tour was the opportunity that each student had to step down onto the largest temporary work platforms in New York City where crews of iron workers were installing massive underbridge diagonal bracing. Workers were seen using a wide array of tools including power vanes, piston scalers, Hougén drills, hell-dogs, needle scalers, air guns, torque wrenches and grinders. Framing members were lowered by hydraulic crane to the edge of the platforms, wheeled in by carts and raised in place using chain falls. Further along the bridge, students observed Yonkers lifting saw-cut deck slabs and steel stringers in preparation for a new concrete-filled steel grid deck system. Footing excavation and concrete was in progress at the far end of the site near Canal Street.

Most impressive was the breathtaking view of the Manhattan skyline and the Brooklyn Bridge as seen from atop the closed roadway. More than a few "Kodak Moments" were captured from center span as the students rode the four foot deflection slowly up and down as the subway cars traversed the structure on the lower track level. At the completion of the rehabilitation work the deflection will be cut in half.

The tour groups later returned to a box lunch which was awaiting them back on the Polytechnic Campus where everyone found a park bench or a patch of lawn to collapse onto before their return trips. As much as the Moles enjoyed the exercise, the students enjoyed the rare opportunity to be guided through the inner workings of a major bridge rehabilitation project. Through the efforts of the Moles Education Committee and Yonkers Contracting Company many students returned to their own campus with a sense that the world of Civil Engineering extends far beyond the classroom experience. Photos on page 10.

ENR's Men Who Made Marks

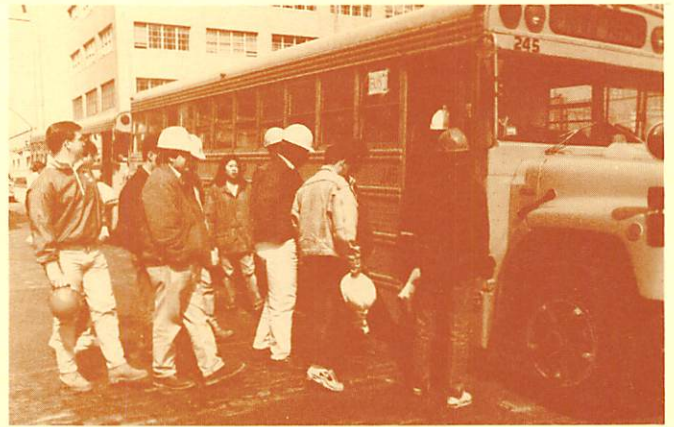


JOHN KOLAYA was among ENR's "Those Who Made Marks" and was awarded a Medal of Excellence for contributions to the construction industry in 1992. The Award was presented on February 10 at The Plaza in New York City in recognition of his development of an innovative construction technique that saved six months in replacing rocker bearings on a fifty year old viaduct on the Long Island Expressway. He used 1,000 ton flat jacks to temporarily carry the structure while permanent, seismic-resistant bearings were being manufactured. John is currently in charge of the reconstruction of The Manhattan Bridge for Yonkers Contracting Company.

AND

New member EVARETT CRUZ (Cruz Construction Corp's Vice President and Secretary, Chief Executive Officer) saved \$5.5 million and over one year by combining a new method of sinking shafts with microtunneling to eliminate sheeting and dewatering on a problematic New York City sewer line.

STUDENTS' DAY 1993

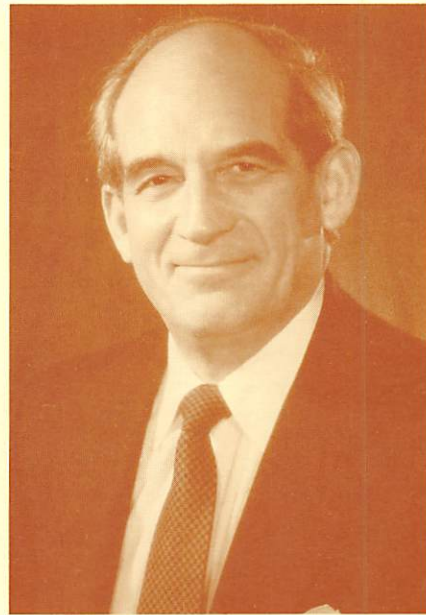


NJSPE Award to Worischeck



On April 30th, CHARLES A. WORISCHECK was honored with the New Jersey Society of Professional Engineers' Distinguished Service Award for 1993. A past president of the Society, Charlie accepted the Award at the NJSPE's 69th Annual Conference and Exhibition. Recently retired after over thirty years with the Conduit and Foundation Corporation where he was Vice President and Chief Engineer, he is now an outside consultant to the company's Orlando office. Throughout his career, Charlie dedicated much of his time to NJSPE on all three levels of the society: local, state and national. He served as a chapter officer; state president; and chairman of NSPE's Legislative and Government Affairs Committee. He is the recipient of several Awards recently including the NJPE's in Construction "Constructor of the Year" Award in 1990 and the 1992 "Engineer of the Year" Award from the Bergen County Society of Professional Engineers.

Mergentime Honored with Honorary Doctorate



On May 16th, CHARLES E. MERGENTIME was honored by his alma mater, Purdue University, for his achievements in engineering, industry and technological innovation when he was awarded an Honorary Doctorate in Engineering, the University's highest form of recognition. Charlie has forty years of noteworthy achievements in the heavy construction industry. He graduated from Purdue University in 1953 with a bachelor's degree in civil engineering. Over the years at Purdue he has been affiliated with the Engineering Visiting Committee and the Old Masters Program and been named Distinguished Engineering Alumnus. Charlie is a fellow of the American Society of Civil Engineers and a member of the American Public Transit Association, Associated General Contractors of America and the Society of American Military Engineers. He is the only person ever to head as President of both the Moles and the Beavers. Charlie was the recipient of the 1987 Moles' Member Award for outstanding achievement in construction

55th ANNUAL BUSINESS MEETING



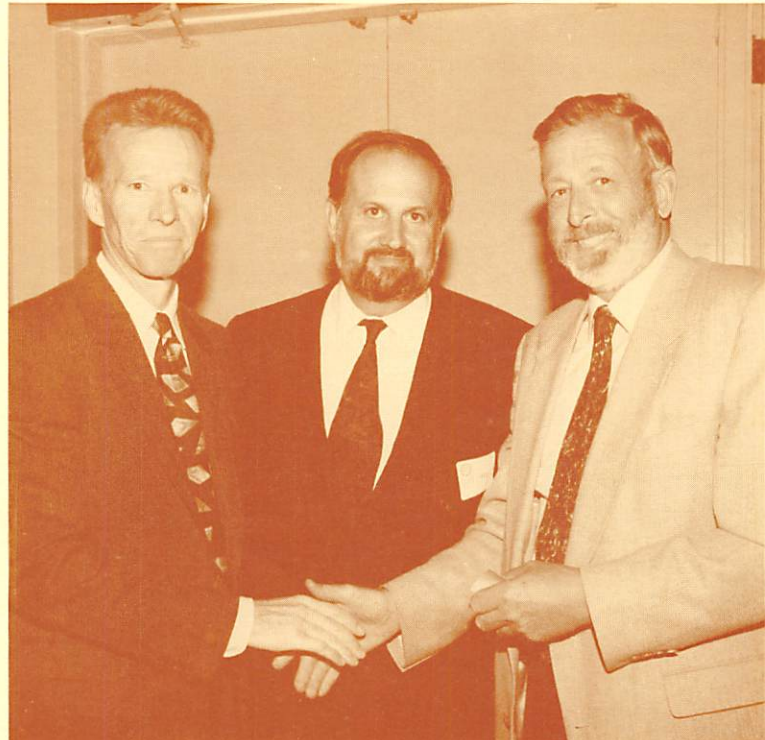
JIM ARMITAGE reminisces with AL HAMMOND



BOB JENNY welcomes new member PRAKASH DONDE



JACK WALLE congratulates GENE FULLAM on his son, GENE, III's acceptance into The Moles



CLAES BJORK, LOU D'AMICO and RUDI van LEEUWEN look pretty for the camera