

NEWS BULLETIN

AN ASSOCIATION OF INDIVIDUALS

HOLING



OF THE MOLES

ENGAGED IN HEAVY CONSTRUCTION

THROUGH

APRIL, 1993

Elmer A. Richards elected President for 1993/94

ELMER A. RICHARDS, Partner in the prominent New York City based foundation engineering firm, Mueser Rutledge Consulting Engineers has been elected to head The Moles for the upcoming year. He succeeds **GEORGE B. SEARLE**, President of IA Construction, headquartered in Concordville, PA.; and will receive the gavel, symbol of Office, at the Annual Business Meeting & Dinner to be held on Wednesday, May 5, 1993 at The New York Hilton.

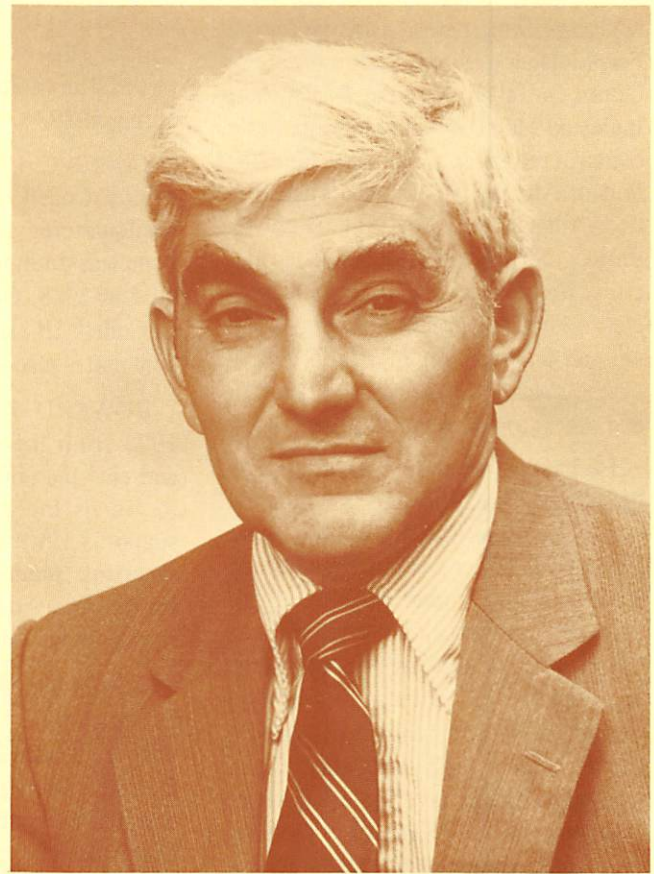
Other Officers elected are: First Vice President, **THOMAS E. DAILEY**, Perini Corporation; Second Vice President, **GERARD A. NEUMANN, JR.**, Spearin, Preston & Burrows Inc.; Treasurer, **DANIEL J. RAGO**, Yonkers Contracting Co., Inc.; Secretary, **MELVIN FEBESH**, Urban Substructures Inc.; and Sergeant-at-Arms, **FRANK D. COONEY**, County Asphalt Inc.

TRUSTEES elected to serve for three (3) years are: **LOUIS S. D'AMICO**, Slattery Associates Inc.; **LEON C. HERON, JR.**, Kiewit Construction Company; **JOSEPH M. MARTOSELLA**, Buckley & Company Inc.; and **EDWARD S. PLOTKIN**, Commissioner, Dept. of Public Works, Westchester County.

Elmer earned a BSCE from Lehigh University in 1951 and an MS from Northwestern University in 1952; and is a registered Professional Engineer in many states. He joined Mueser Rutledge in 1952 and has been a Partner for the past twenty years. During his career he has served as a Consultant to Contractors, Architects, Engineers, Public Agencies and Corporations.

He is specialized in the geotechnical aspects of design and construction of foundations, soils investigations, laboratory test interpretation, analysis of probable foundation performance, establishment of design criteria, feasibility studies and reports for all types of heavy construction on both land and water. He has been responsible for establishing foundation design criteria for numerous buildings in the New York Metropolitan area and was recently the Partner-in-Charge for the firm's work on several Metrotech projects; a large Federal Reserve Bank Complex; and the new Merck Corporate Headquarters.

He is presently in charge of the firm's activities for design of foundations for the new vehicular bridge in Croton, New York and the new railroad bridge in Peekskill, New York for the Metro North Commuter Rail-



ELMER A. RICHARDS

(Continued on Page 2)

Elmer A. Richards

(Continued from Page 1)

road; the design of the cut-off wall for the chromium plant being remediated by Allied Signal in Baltimore, MD.; and geotechnical studies for the new Ocean Outfall to a water depth of four hundred feet for PRASA in Ponce, Puerto Rico.

Elmer has also managed such diversified projects as site preparation contract for a four million cubic yard landfill project, Fresh Creek, Brooklyn, NY; spoil containment structure for the Fort McHenry Tunnel, Baltimore, MD; Ocean Outfall in Virginia Beach, VA; Ingleside Mall, Holyoke, MA, partially constructed over a sanitary landfill; Port of Albany Waterfront Rehabilitation, Albany, NY; West Side Highway Project, NY; Amtrak Maintenance Facility, Rensselaer, NY; a series of projects at the Department of Energy's Savannah River Plant in Aiken, SC; a synthetic natural gas plant, Linden, NJ; and others too numerous to list.

He has had extensive experience in the Albany area through his work on the foundations for the Empire State Plaza; wastewater treatment plants and trunk sewers for the counties of Albany, Rensselaer and Saratoga; and foundations of various cement plants. His responsibilities for subsurface investigation and foundation designs for other water supply and wastewater treatment plants have included major installations in Kentucky, Maine, Maryland, Massachusetts, New Jersey, Ohio, Texas, Virginia and Wisconsin.

As a former director of the laboratory with general responsibility for the firm's geotechnical activities, Elmer has had involvement in most of the firm's large projects during the past 41 years.

Elmer and his wife Susan are residents of Westchester County, NY and have two grown sons, Andrew and Peter.

When not in the office or at construction sites, he can usually be found on a "business" trip; racing his sailboat; or canoeing in the Adirondacks.

Five Moles Celebrate Forty Years

Five Moles elected members in 1953 will receive "Life" Membership effective May 1, 1993. They are:

WELDON S. "BOB" BOOTH, principal and founder of W.S. Booth & Company is a pioneer and innovator in foundation construction. He has brought a unique viewpoint to foundation engineering and has made the difficult world of foundations easier for both engineers and constructors. He served The Moles as Sergeant-at-Arms during 1989.

JAMES C. CODELL, JR., is president of Codell Construction Company headquartered at Winchester, KY. The firm was founded by his father who died in 1948. One of his sons, James C. Codell, III, is Executive Vice President and is also a Mole Member.

EDWARD J. QUIRIN retired in 1972 from the position of president and chairman of the board of Frederic R. Harris Inc. He was an active and supportive member until he became an emeritus member in 1973 having served as a committee member and trustee of The Moles.

WILLIAM M. SHEEHAN retired on January 1, 1981 as Manager, NY District, Mason & Hanger-Silas Mason Co., Inc. During the period from 1953 when he became a member of The Moles to approximately 1971, he was affiliated with Tully & DiNapoli. He was an active member of the Program Committee ultimately serving as it's Chairman and as a Trustee during the period from 1958/60.

B/G BENJAMIN B. TALLEY, USA (Ret.) was Division Engineer of the North Atlantic Division, United States Army Corps of Engineers. Retiring from the Army in 1956 he joined Raymond International and some time later he was affiliated with Metcalf & Eddy. He resides in Alaska for the most part of the year and has led a very exciting career in construction throughout many parts of the World.

STUDENTS DAY

Students' Day field trip has been arranged for Friday, April 30, 1993. In announcing the date of the trip George Tamaro, chairman of the Education Committee advised that the students would be given the opportunity of viewing reconstruction or restoration of two projects in New York City. The first site is located at the Manhattan Bridge connecting Brooklyn to Manhattan. The site is easily accessible by public transportation. Students will be transported by busses from the #1 site to the #2 site and back again.

At the Manhattan Bridge Reconstruction Project, the students will have an opportunity of observing steelworkers installing a new structural stiffening system for the 85 year old suspension bridge. They will see first hand the detrimental effects of years of neglect. The repair work is conducted while maintaining five lanes of vehicular traffic and two active subway tracks on the bridge. The contractor will be replacing and reinforcing connection on beams, stringers and trusses, replacing underbridge cross-bracing members and installing lateral bracing beneath the upper level of the bridge. Approach deck demolition is also expected to be underway at the time of our visit.

The second site is located on the upper west side of Manhattan between 59th and 72nd Streets. At this site we will see the reconstruction of the Miller Highway (extension of the Henry Hudson Parkway) where the existing elevated structure is being reconstructed to permit its continuing service as the major west side artery for Manhattan. The existing Miller Highway is to eventually be demolished and replaced with a completely new structure. The reconstruction underway at this time is of a temporary nature. They will see the construction of large reinforced concrete piers that are to encase existing columns and to substitute for existing highly deteriorated truss bracing. These piers will be connected to the existing foundations. Work on the replacement of seriously deteriorated columns, beams, floor





ARTHUR RESSA died on January 30, 1993 after an illness of several months. He was 49.

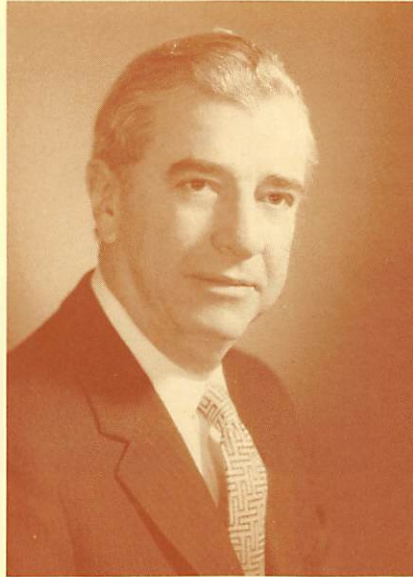
Born in Brooklyn in 1944, he received a degree in Construction Technology from Pratt Institute in 1983. He joined Underpinning & Foundation in 1966 as a field superintendent, active in all phases of the company's operations including pile driving, sheeting and shoring, caissons and marine work. Art worked his way through the ranks and during his 25 years with the firm worked on many of their major foundation projects including Co-Op City in the Bronx, Starrett City in Brooklyn. The Continental Insurance Company Building and the World Financial Center in Manhattan and the Prudential Center in Boston. At the time of his death he was a Vice President and General Superintendent in charge of all field operations for the firm.

STUDENTS DAY (Continued)

framing and expansion bearing will also be underway. New bridge structure will be installed in certain areas as well.

Assembly will be at 8 a.m. at the Dibner Library Auditorium at Polytechnic University in Brooklyn. Hard Hats, coffee and pastries will be provided at this time and a briefing on the construction work will be given by key personnel from the Contractor. Box lunches will also be provided for those attending.

Life Member Dead at 83



PHILIP S. MILLER died on February 19, 1993, after a lengthy illness, and shortly before his 83rd birthday.

Born February 22, 1910 in Sioux City, Iowa, Phil earned his civil engineering degree in 1933 from the University of Wisconsin. He worked for several years in the midwest on railroad construction before coming to New York. From 1935 to 1950 he worked for the Sam Rosoff companies except for time served in the Air Force during World War II. In 1950 he joined Villa Contracting Company of Westfield, NJ as Chief Engineer working on the construction of the New Jersey Turnpike and the Garden State Parkway.

In 1953 Phil and his long time associate Tony Araneo, formed Mohawk Constructors Inc., which grew into one of the major heavy and highway construction firms in New Jersey, participating in many projects for the NJ Turnpike Authority, the NJ Dept. of Transportation, the NJ Highway Authority and numerous other public agencies. In addition, the company's private clients included Exxon Co., USA, Public Service Electric & Gas Co., Chevron Oil, Orange and Rockland Utilities, CF Braun & Co., The Bechtel Co., Foster-Wheeler Engineering, and many others. During this pe-

A MOMENT OF SILENCE

ALBERT L. REES died on January 3, 1993. He was 98.

A member since 1951, he was elected to Emeritus Status in 1962. His experience during his active career was primarily with the Transit Mix Concrete Companies having been in charge of the construction and maintenance of their plants and docks supervising and performing the construction work.

PAUL M. WECKESSER died on January 13, 1993, after a very brief bout with cancer. He was 59.

Paul received a B.C.E. (Structures) in 1956 from the University of Detroit and an M.S.C.E. (Traffic and Transportation) in 1958 from Purdue University.

He had a distinguished career with the New Jersey Turnpike Authority (1959 - 1990) planning, design, construction and operation of high volume, limited access highways and toll systems, becoming Chief Engineer in 1983.

At the time of his death he was a Vice President with De Leuw, Cather & Company.

MILLER (Continued)

riod, he founded and operated Philip S. Miller & Associates, a consulting firm, servicing many large public agencies nationwide.

Phil retired as President of Mohawk in November 1988. A member of The Moles since 1948 he received Life Membership in 1988. He served as Trustee of The Moles from 1971 to 1973 and again from 1979 to 1981. He also served as Secretary during the period from 1974 through 1976.

*Thirty
New Members
Elected*

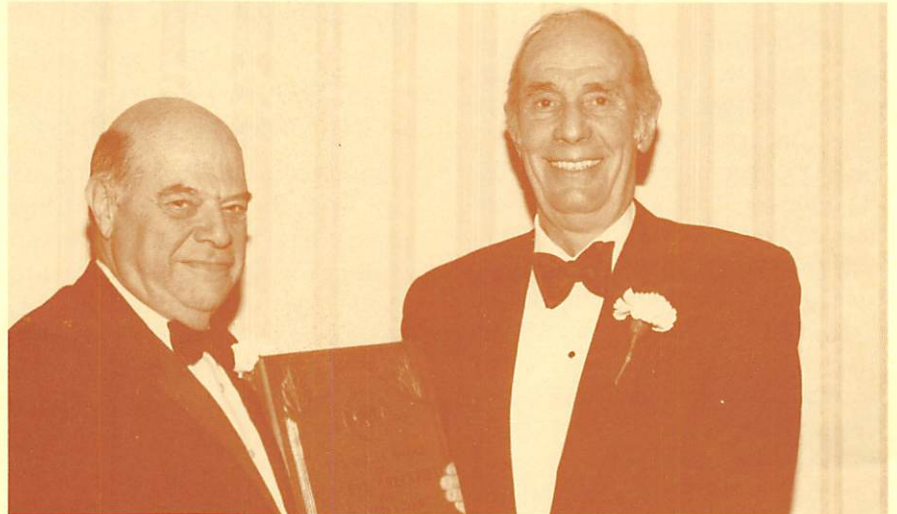
At a recent Executive Committee Meeting, thirty new members were elected to membership in The Moles. Their membership will become effective May 1, 1993.

In alphabetical order, they are: LEWIS E. AKIN, Chicago Bridge & Iron Co.; JAMES J. BELL, Bell Civil Inc.; DAVID W. BJORSON, Commercial Pantex Sika Inc.; EDWARD J. BURKE, III, ETI Explosives Technologies International Inc.; JAY E. CARLSON, S.A. Healy Co.; EVARETT CRUZ, Cruz Construction Corp.; ANDREW W. D'ANGELO, Yonkers Contracting Co., Inc.; NORMAN G. DELBRIDGE, J.A. Jones Construction; PRAKASH M. DONDE, Jenny Engineering; JOSEPH S. FINSTON, Kaufman Construction Co.; EDWARD P. FORTE, Laquila Construction Co.; EUGENE J. FULLAM, III, Twin County Steel Service; MICHAEL GAY, Kiewit Construction Co.; KENNETH A. ISAACS, Perini Corp.; JOSEPH F. MALANDRO, E.E. Cruz & Co.; FRANK MANNA, Fischbach and Moore Inc.; WILLIAM G. MURPHY, JR., the Halmar Corp.; JOHN NORRIS, Forest City/Ratner; THOMAS O'DONNELL, Gates Construction Co.; DAVID M. ONEGLIA, O & G Industries; JOHN J. O'SULLIVAN, Malcolm Pirnie Inc.; STEPHEN G. PRICE, ABB Susa Inc.; RICHARD J. REDMOND, JR., Perini Corp.; HY RICHMAN, Yonkers Contracting Co., Inc.; HENRY A. RUSSELL, JR., Parsons Brinckerhoff Quade & Douglas; BIRGER SCHMIDT, Parsons Brinckerhoff Quade & Douglas; GERARD T. SCHREIBER, The Edward Gray Corporation; MOHAMED SHAMZAD, Mergentime Corporation; THOMAS J. WALSH, III, Walsh Construction Company; TERRY L. ZETTLE, J.E. Brenneman Co.

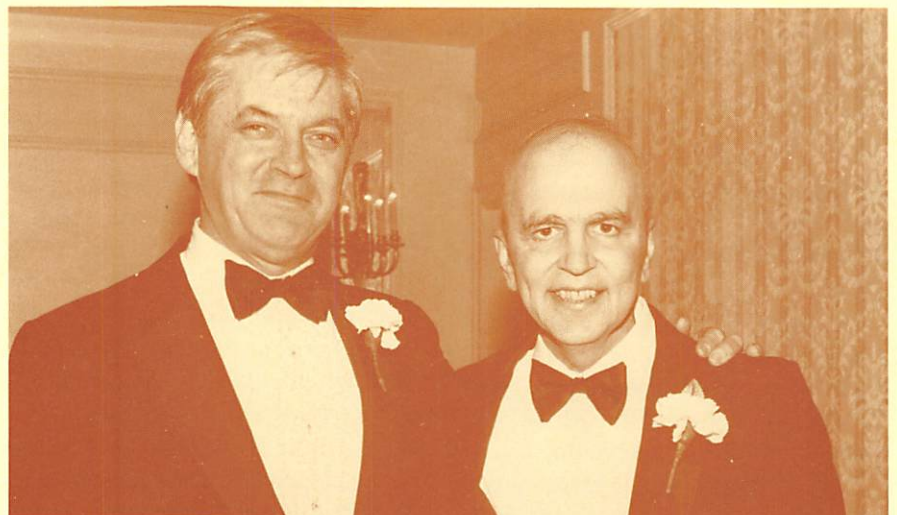
1,200 Attend '93 Award Dinner



CHARLES E. MERGENTIME presents the 1993 Non-Member Award to JOHN M. HARBERT, III on January 27



NORMAN A. NADEL presents the 1993 member Award to S. STEVE GREENFIELD on January 27



GERARD A. NEUMANN, JR., Chairman Award Committee welcomes most recent Honorary Member, The Honorable PAUL E. TSONGAS who delivered the principal address at the Dinner.