

NEWS BULLETIN

AN ASSOCIATION OF INDIVIDUALS

HOLING



OF THE MOLES

ENGAGED IN HEAVY CONSTRUCTION

THROUGH

JULY, 1992

FIFTY-FOURTH ANNUAL BUSINESS MEETING



Photo above: Retiring President, ROBERT C. KOCH (right) exchanges gavel with The Moles' 1992/93 President, GEORGE B. SEARLE at the Annual Business Meeting & Dinner held at The New York Hilton on May 5, 1992.

Photo below: ALFRED C. MAEVIS (right) receives "LIFE" Membership from President ROBERT C. KOCH at Annual Business Meeting.



CLAMBAKE

•
**TUESDAY
AUGUST 4, 1992**
•

TRAVERS ISLAND
PELHAM, N. Y.
•

REGISTRATION
11 A.M. to 6 P.M.

LUNCH
11:30 A.M. to 2 P.M.

WHEEL OF FORTUNE
DRAWING
2:30 P.M. and 4:30 P.M.

OUTDOOR GAMES
1 P.M. to 5 P.M.

SOFTBALL GAME
3 P.M. to 5 P.M.

FREE BEER ALL DAY

SWIMMING and TENNIS
ALL DAY

SURF & TURF DINNER
SERVED PROMPTLY at 6:30 P.M.

PRIZE AWARDS
AFTER DINNER

FIFTY-FOURTH ANNUAL BUSINESS MEETING

Two Hundred and Twenty Five members attended the 54th Annual Business Meeting & Dinner held on May 5, 1992. This included 28 of the 34 new members elected. Photos of the new members present appear on pages 4 and 5 together with brief bios on all 34.

After the cocktail hour and super dinner, President Bob Koch called the meeting to order. He expressed regrets received from those who could not be present; called a moment of silence after reading the names of the thirteen members who had passed away since the last business meeting; introduced the new members; and presented a "Forty Year Life Membership" certificate to ALFRED C. MAEVIS. (in photo on cover) Others receiving Forty Year certificates but who could not be present were: GEORGE W. BENISCH, LOUIS G. COAKLEY, HOWARD R. GOULD and HENRY M. WASUNG. After the Treasurer submitted his report, President Koch presented the outgoing Treasurer, CHARLES F. VACHRIS with a citation for his three years of dedicated service as Treasurer (see photo on this page). Other reports were submitted by the Secretary and Chairmen of the various committees.

President Koch introduced the new Officers and Trustees. Starting with the Trustees, he introduced: EDWARD CRUZ, E. E. Cruz & Company, Inc.; JAMES J. KERR, Kerr Construction Inc.; BERNARD P. MONAHAN, Crow Construction Company; JOHN A. RUPICH, Gates Construction Corp.; and THOMAS B. TREACY, Buckley, Treacy, Schaffel, Mackey & Abbate, all serving a three year term. President Koch introduced the new Officers of The Moles for the 1992/93 year as follows: Sergeant-at-Arms, RICHARD J. O'SULLIVAN, Spearin Preston & Burrows Inc.; Secretary, JOSEPH J. DIEHL, Kiewit Eastern Co.; Treasurer, DANIEL J. RAGO, Yonkers Contracting Co., Inc.; Second Vice President, THOMAS E. DAILEY, Perini Corporation; First Vice President, ELMER A. RICHARDS, Mueser Rutledge Consulting Engineers; and President, GEORGE B. SEARLE, I. A. Construction Corp.

As the gavel was turned over to the



CHARLES F. VACHRIS (left) receives citation for his dedicated service as Treasurer (May 1, 1989 through April 30, 1992) from President, ROBERT C. KOCH at Annual Business Meeting.

new President, George B. Searle, he performed his first official act by presenting retiring President, Robert C. Koch with the traditional past president's pin and citation.

Retiring President Koch responded (his remarks are printed separate from this report on this page and page 3).

George Searle greeted the group for the first time as President saying – *"It is with great pride and pleasure that I become the President of The Moles. It is an honor to be chosen as the Chief Executive of this most prestigious organization. However, we all know who does the real work for The Moles – Arline Gallagher and I pray to God she accepts the challenge again this year. Even recognizing my dependency on her guidance, I still accept this recognition as one of the highlights of my career. I have been judged by my peers and have been truly honored by them. I accept the opportunity to represent and indeed to lead The Moles during this trying time in our industry. I am open to all suggestions, so please get in touch if you have something on your mind. This is a great organization that only improves with age and the help of an active membership"*.

President Searle introduced the Committee Chairmen and Vice Chairmen for the coming year and adjourned the meeting.

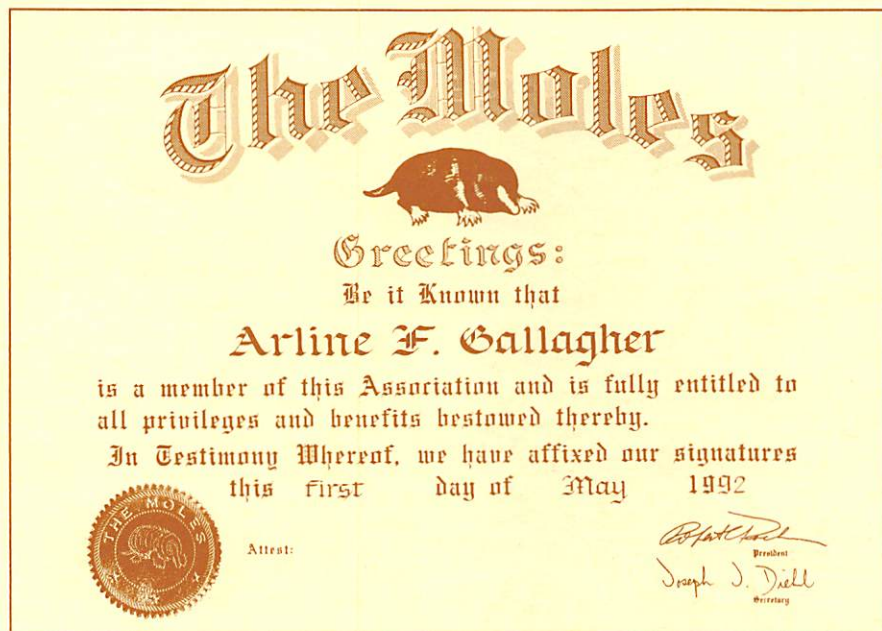
Visiting continued after the meeting adjourned.

Remarks of Retiring President Robert C. Koch

I recall one year ago having received the gavel from CHARLIE CAMPBELL and having felt very honored to start my year as President of The Moles. The past year has only added to that feeling of pride. The members of our organization are the most cooperative, dedicated and professional individuals in the industry, although we "beat each other's brains out" competing for jobs, and of course are sure that the low bidder has "lost his marbles", that is when we are not low – when it comes to items related to The Moles, ranks are closed, differences are put aside, and a spirit of cooperation and camaraderie prevails – which is what our Association is all about.

Along these lines, I'd like to share with you a portion of a letter from HOWARD GOULD, a former President and one of our "40 Year Life members" honored tonight. It goes as follows: *"Thank you, bob, for your personal good wishes. If Possible, tell my fellow Moles that Edna and I are in good shape and look forward to another ten years. Tell them also that words are inadequate to express how much I value my Mole associations and how often I think of members and happy past events. I say thank you for forty wonderful years and many more to come."*

TRIBUTE TO ARLINE . . .



The Moles are a GREAT group of men. Don't anyone forget it! Also give my best to Arline Gallagher along with a big hug. You're lucky to have her".

Howard's letter is typical of many we receive and I believe, speaks to the meaning of what it is to be a MOLE.

I would like to thank all members for their help over the last year and the many Committee Chairmen and their Committees as well as The Moles' Officers and Trustees for their time spent in attending meetings and for their guidance – all of which has made the year a real pleasure for me.

As my last act as outgoing President, I have the honor and privilege of paying tribute to our own Arline Gallagher who has been Executive Secretary of The Moles for 28 years – and, we hope, for many more to come.

Arline has been rightly praised for her efficiency in the day to day operations of the headquarters staff and for coordinating and supervising all the Business Meetings, Award Meetings, Committee meetings, Clam Bakes, and a myriad of other activities of our Association. Her husband, Buddy, who as you know, was in attendance with Arline at many of the functions, once said that he couldn't remember her ever missing any meeting or function.

She is the catalyst that makes things work and the person who knows more about The Moles than most members do about their own Organization. It has

been Arline's wise counsel over the many years that has made The Moles such a unique and admired Organization. She is also the conscience of The Moles and, as anyone who has worked with her knows, she makes sure that all By-Laws and traditions of the Organization are religiously adhered to.

Arline is a very remarkable woman whose dedication and hard work make complicated things run very smoothly and, at the same time, seem very simple. I can assure you that she has made the President's, the Officers' and the Committees' jobs easy.

Arline, you are held in high esteem by all Moles, accordingly, the Executive Committee has voted unanimously to recognize your many years of dedicated service. This Award takes the form of the following citation which reads as follows: See photo above.

Arline, this of course means that you are a full-fledged member of The Moles, and also the first woman to be elected to membership. Congratulations!

Arline, will you please come up to the podium to receive your certificate of membership.

Arline, surprised (but never speechless) responded with her THANKS for this HONOR and the nice things Bob Koch said; hoped she would never let them down; wished her husband Buddy could have been with her tonight; and graciously accepted a standing ovation from the members present.

Life Member Dies at 77

LOUIS G. COAKLEY (Coke) died June 8, 1992 in Bradenton, Florida. He was 77.

Coke's father while a member of the Royal Canadian Engineers worked on many difficult projects throughout the world including the fortification of Singapore. Following in his father's footsteps, upon graduation from high school, Coke joined the joint venture of Spencer, White & Prentis, Turner Construction and George A. Fuller Constructing Lock and Dam 26 at Alton, IL. Continuing with Spencer, White & Prentis he worked on the 6th Avenue Subway (Waverly Place to 14th St.) and became Office Manager at Shaft 5A in Marlboro, NY for the construction of the Board of Water Supply tunnel under the Hudson River from Marlboro to Beacon, NY.

In 1941 he enlisted as a private in the U.S. Army. He was shortly transferred to Officers' Training and upon graduation was attached to the 853rd Engineering Aviation battalion and shipped out. Torpedoed in the Mediterranean, he clung to debris until he was picked up the second day. He was hospitalized in Africa. Although he was ticketed for a return to the States, upon hearing that the remnants of the battalion were shipping out to the Burma theatre, Coke, on crutches, escaped the hospital through a window and rejoined his unit. A much decorated Major by the end of the war he returned from Asia and rejoined Spencer, White & Prentis.

Within a year he joined Weldon S. (Bob) Booth and James P. Cummins in founding Coakley & Booth, Inc., Foundation Specialists. During the next 16 years they successfully completed over two hundred contracts and founded Contact Sheeting, Inc. In 1962 his interest in the Corporation was purchased and he founded Eastern Construction based in Washington, D.C. A few years later he accepted an offer from Thomas Crimmins Contracting Company. This happy relationship continued until his retirement and his move to Florida in 1984.

He received his "Life Membership" in The Moles, this past May. Unable to attend the Dinner to receive it in person, he had written, "There is no greater feeling one can have than to share in the association of fellow members at the meetings, dinners and outings all of which we look forward to." He had served as Sergeant-at-Arms in 1977 and had been on several committees throughout his active membership in The Moles.

He is survived by his wife, Janet; two children, Janet and Louis, Jr.; and two sisters Margaret and Eileen.

NEW MEMBERS



Left to right: David E. Puza, Julian M. F. Kau, Jesse C. Jameson, James Strobel, Bruce Coles, Hugh S. Lacy, Joseph C. McGowan, Everett G. Cruz, Antonino Catalano, Joseph D. Guertin, Jr., V. Dennis Millgard, Stephen L. Koch, John J. Sullivan, Daniel Himick.

DARWIN J. ANDERSON is Assistant District Manager of Kiewit Eastern Company's Northeast District, performing heavy civil construction. He earned his BSCE degree in 1964 from south Dakota State University and his MSCE in 1967 from Oklahoma State University. He has worked his way through the ranks at Kiewit for over twenty years. He worked on the bid preparation for the megaproject, Ft. McHenry Tunnel and later was Manager of Marine Operations on that project.

BRUCE C. COLES is President and Director of Stone & Webster Incorporated. Since joining the corporation in 1968 he has held various management, technical and construction positions throughout his career, involved in all aspects of fossil, industrial, process and nuclear projects. He holds a bachelor's (1966) and a master's (1968) degree in civil engineering from the University of Maine; he taught in the University's civil engineering department; received the University's Distinguished Engineer Award from the College of Engineering in October 1990 and completed the University of Michigan's Executive Management Program in 1980. He is a licensed professional engineer in 22 states and is active in numerous trade affiliations and organizations.

WITT BARLOW is President and Chief Executive Officer of Great Lakes Dredge & Dock Company. He joined Great Lakes in 1973 as Dredging Superintendent and Field Engineer. In 1976 he was appointed senior company manager in the Middle East and was responsible for the company's dredging at Jebel Ali. In 1981 he assumed the position of Chief Engineer of the company and shortly thereafter was named a Vice President. He was elected to his current position in 1987. He holds a BA from Trinity College, a BS and MS from Columbia University and an MBA from the University of Chicago.

RALPH J. ANGAROLA, Jr., is Project Director for Sverdrup Corporation. He earned his BSCE degree in 1960 from Manhattan College and studied at Rutgers University. His many years experience covers major project supervision for prominent engineering and contracting firms and as a consultant and instructor. He is well known for his expertise in tunneling.

ANTONINO CATALANO is President of ICOS Boston, performing specialty foundation work. He has a Doctorate in Civil Engineering from the University of Rome, Italy and before appearing on the U.S. scene had experience related to foundation work in Europe, the Middle East and the Far East.

ALFRED C. CLAUS, Jr., is Construction Manager/Chief Mechanical Engineer for Kerr Construction Inc. The firm's work includes piling, sheeting, shoring and tie-backs including the design of equipment for same. Al holds a BS in civil engineering which he earned in 1974 from Rutgers College of Engineering. Prior to joining Kerr Construction he worked on a construction project in Venezuela for Lummus Construction.

EVERETT G., CRUZ is Executive Vice President of E. E. Cruz & Company Inc. During his over twenty-five years in construction he has directed and performed work in New Jersey, New York, Connecticut, Massachusetts and New Hampshire. A few of the more recent notable projects he has been in charge of are: a section of the Orange Line Subway in Boston (\$46 million); an interceptor tunnel project on Staten Island (\$41 million) and a \$17 million highway reconstruction project in New Jersey. He was educated at the Colegio Infante de Sagres in Portugal and the Latin American Institute in New York City.

JOHN S. DEERKOSKI is President of John S. Deerkoski, P.E. & Associates. John has been active in the heavy construction field in the Metropolitan area since receiving his BSCE from Brooklyn Polytechnical Institute in 1969. His work consists of design of temporary structures, claims, contract changes on bridges, tunnels, buildings and the like. He has served as consultant for many prominent Mole affiliated firms in and around the area. He is a lecturer and active on numerous professional committees.

CHRISTOPHER M. DEVINE is General Superintendent for the prominent marine contracting firm of Spearin, Preston & Burrows Inc. A graduate of Long Island University and C. W. Post, Chris joined SP&B in 1977 starting as a Superintendent. He has advanced in experience and responsibility to the position of General Superintendent for the firm, responsible for all their heavy marine operations in the area.

THOMAS A. GELORMINO is President of Vet's Explosives Inc. The firm supplies explosives to many general contractors and does blast contract work for pipelines, quarries, small diameter tunnels, road work, large site development, sewers, etc. He is a specialist contractor and performs work which calls for expertise in rock excavation. He has written several important papers on blasting techniques. Tom earned his BSCE from Worcester Polytechnic Institute (1968) and an MBA from Syracuse University (1970).

PAUL H. GILBERT is Board Chairman of Parsons Brinckerhoff Quade & Douglas and currently Project Director on the PB/MK Team responsible for design and construction of the superconducting super collider project in Texas which involves seventy miles of rock tunneling. He earned a BSCE in 1959 from the University of California at Berkeley and an MSCE in 1960. He has been with Parsons Brinckerhoff for twenty three years.

JOSEPH D. GUERTIN, Jr., is Senior Principal at GZA GeoEnvironmental, Inc. He has a BSCE from Northeastern University (1964) and an SMCE (soil Mechanics and foundation Engineering) from Massachusetts Institute of Technology (1967). He has extensive experience with design and construction of tunnels. For the past 23 years, Joe has specialized in tunnel design and construction, geotechnical instrumentation and rock engineering. He has presented numerous technical papers on tunneling, transit, geotechnical instrumentation and groundwater control issues. Current assignments of geotechnical engineering for which he is responsible are the \$73M Inter-Island Tunnel in Boston and the \$300M Sudbury Aqueduct Project.

DYKE HOWELL is President & CEO of Frontier-Kemper Constructors Inc. and has been since its inception in 1972. The firm is active in tunneling, shaft sinking and raise drilling for civil construction and mining throughout the United States, Canada and Mexico. Currently they are the sponsor on joint ventures performing the Hanging Lake Tunnels on I-70 in Colorado and the Haiku Tunnels on H-3 on Oahu. Dyke has a silver diploma, Engineer of Mines which he earned in 1963 from the Colorado School of Mines.

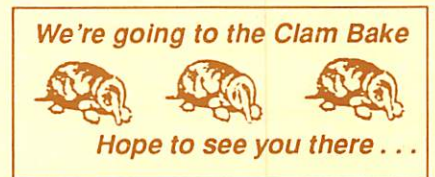


Left to right: Alfred C. Claus, Jr., Joseph M. LoCurto, John S. Deerkowki, Stephen J. Pirrelli, Christopher M. Devine, Andrew Mazzotta, David E. Thompson, Darwin J. Anderson, Alan W. Todd, Dyke Howell, Francis X. McArdle, Thomas Gelormino, W.D. Wightman, James E. Kelley Jr.

DANIEL E. HIMICK is Vice President of Marketing and Manager of Northeast Operations at Nicholson Construction Company. The firm specializes in foundations and earth support for bridges, dams, highways, subways and buildings. Prior to his current affiliation he worked at Perini Corporation starting as a field engineer progressing to superintendent and subsequently project manager. A few of the notable projects Dan has been involved with during his twenty year career were the Washington Metro Sunken Tube Tunnel Crossing of the Washington Channel, the Davis Square Subway project in Boston and slurry wall work at Battery Park City.

JAMES E. KELLEY, Jr., is Vice Chairman, Senior Vice President and Senior Principal for the Kellogg Corporation in Littleton, Colorado. He holds a BSCE from Purdue University which he earned in 1964; and is licensed as a Professional Engineer in Colorado, District of Columbia, Pennsylvania and Virginia. Prior to his joining Kellogg Corporation he was employed in the heavy construction division of Dravo Corporation. During his twelve years with Kellogg he has provided construction consulting for many prominent heavy construction firms.

JESSE C. JAMESON is a Project Manager for Perini Corporation. He earned his BSCE from Ohio Northern University in 1977; and is licensed as a Professional Engineer in the states of Ohio, Maryland, New Jersey and New York. Immediately after graduation he started his career with Roger J. Au & Son, Inc., in Mansfield, Ohio as a Project Engineer. During the period from 1980 to 1985 he was employed by J. Rich Steers, Inc., as Assistant Project Manager then Project Manager. From 1985 to 1987 he worked for Raymond International on the Super Steel Pier Replacement at Resorts International in Atlantic City. He joined Perini in 1987 and was Project Manager on the firm's work at Croton Aqueduct for the New York City DEP. He is currently Project Manager on their work for the New Jersey DOT at Bordentown, NJ, a \$50.1 million project consisting of twin 1,600 lf structural and precast concrete bridges crossing Crosswicks Creek and 5,000 lf of dual highway.



(Continued on Page 6)

NEW MEMBERS

(Continued from Page 5)

JULIAN M. F. KAU is Assistant Director of Aviation (Capital Programs) for the Port Authority of NY & NJ. In this capacity, he is responsible for all planning, design and construction of capital and major work projects for Newark, LaGuardia and J.F.K. airports. Prior to that he directed the preliminary construction for all projects of the \$1.4 billion JFK Redevelopment Program. A retired Captain of the U.S. Navy (Civil Engineer Corps) he had 29 years experience in construction of roads, airfields, waterfront and dry dock structures and pile foundations. He holds a BSME from the U.S. Naval Academy (1959); a BCE Rensselaer Polytechnic Institute (1961) an MSCE (Structural Dynamics) University of Minnesota (1965) and an MS Business Administration (Sys. Analysis) University of Rochester (1971).

STEPHEN L. KOCH is Senior Vice President and Manager of Operations for the Walsh Construction Company, a division of Guy F. Atkinson Company. In this capacity he is responsible for this Division's field project operations and General Contractor on all types of construction including: heavy, hydro, bridge, industrial, power generation and commercial construction. Steve has been an integral part of Walsh Construction for over twenty-five years, working his way up through the ranks. Currently he is involved with the design and construction of a \$90 million powerhouse just outside of Palm Springs, CA and a \$140 million federal office complex in Oakland, CA.

HUGH S. LACY is a Partner with Mueser Rutledge Consulting Engineers. He earned a BCE in 1962 and an MCE in 1963 from Cornell University. Affiliated for over twenty-five years with MRCE he became a Partner in 1988. His involvement with the Industry as a Geotechnical consultant and designer of foundation structures is highly respected by his peers. He is active in many professional organizations including: ASCE, ISSMFE, ACI, USCOLD, ASDSO and the Metropolitan Engineers of New York City.

JOSEPH M. LoCURTO is Senior Vice President of Nab Construction Corp., a firm performing heavy construction contracts throughout the Tri-State Area. Joe earned degrees in Electrical Engineering and Mechanical Engineering from the University of Kansas (1968) and the New York Institute of Technology (1971). He is a "hands on" construction leader with expertise in sewage treatment and other heavy engineered mechanical construction.

ANDREW MAZZOTTA, veteran in construction with a career spanning some forty years has worked for and has held highly responsible positions with some of the major heavy construction firms in the U.S. His earlier days were spent as Chief Estimator for Merritt-Chapman and Scott Corporation, continually advancing to positions of leadership with Raymond International and Morrison-Knudsen Company. His expertise in marine construction is well known in the industry. He currently serves as a construction consultant with the George A. Tomasso Construction Corp. He earned a BS degree in Marine Engineering & Navigation in 1944 from the U.S. Coast Guard Academy and an MS in Building, Engineering & Construction from Massachusetts Institute of Technology in 1948.

FRANCIS X. McARDLE is Managing Director of the General Contractors Association of New York. In his current position he represents more than one hundred General Contractors with labor negotiations and the administration of labor contracts and the myriad difficulties these contractors face dealing with public and government agencies. During the period from 1978/81 Frank was Commissioner, New York city, Department of Environmental Protection. Following this until 1983 when he joined the GCA he had been affiliated with Olympia and York USA. He has a B.A. from the University of Toronto which he earned in 1964.

V. DENNIS MILLGARD is President and Chief Executive Officer of a leading national heavy foundation contractor. Since 1963 the firm has been solving demanding heavy foundation problems throughout the U.S. and as far away as the Middle East. The firm has built a reputation well known in the industry for their expertise in heavy foundation and underground and marine construction with special emphasis on caisson work.

JOSEPH C. McGOWAN is affiliated with Granite Construction Company in their Heavy Construction Division and has been for the past 12 years. Prior to this he completed a twenty-year career with Hercules, Inc., commencing in 1959 as a technical sales representative and rapidly rising through the ranks to National Heavy Contractors Accounts Manager. During this period of time, he provided technical service and supervision of many large and delicate applications of explosives from the Dallas Airport through the Helms Project in the California Sierras. For Granite he plays a major role in many of the company's major business ventures. He is also Granite's main recruiter of young engineering and seasoned management talent; and represents the firm at community and political functions. He earned a BSBA in 1957 from Duquesne University in Pittsburgh, PA

STEPHEN J. PIRRELLI is currently a Vice President with Shah Associates. He earned a B.S. in Civil Engineering in 1969 from Polytechnic Institute of Brooklyn and has been a participant in heavy construction both in design and construction for over twenty years. During his career Stephen has worked on mass transit tunnels, bridges, ocean outfalls, treatment plants, underpinning and foundations on various major projects having been affiliated with the NYC Transit Authority as well as Schiavone Construction and Horn Construction. He is also known for his tireless efforts and contributions to several professional societies of which he holds membership.

DAVID E. PUZA is currently Area Manager for Perini Corporation at their New York Metro Division. In this capacity he is responsible for managing multiple heavy construction projects in New York. Most of his career has been spent on underground projects and tunneling. Currently he is in charge of the rehabilitation of the Lexington Avenue Subway Line in New York City along with other subway projects in the area. Prior to his affiliation with Perini some years ago, he was with Morrison Knudsen on tunnel work in the Washington, D.C. area. Dave holds a degree in civil engineering from Southeastern Massachusetts University which he earned in 1975.

DANIEL J. SALAMONE, affiliated with ICI Explosives of USA, is a consultant for all phases of blasting and drilling, including but not limited to, road construction, sewers, tunneling, mining, etc. Prior to this he was Senior Sales Technical Representative for Atlas Powder Company in Dallas. Some of the major constructions he has been involved in have been: five sections of the Blue Route in Philadelphia; infrastructure rehabilitation in Baltimore, Md., Philadelphia, PA, and Washington, D.C.

GARY L. SIMPSON is Senior Vice President of Nab Construction Corporation. In this capacity he has overall management of a firm engaged in heavy, general and mechanical construction. His responsibilities include overall supervisory control over the firm's heavy construction operations including work on bridges, water pollution plants, subways, water tunnels and resource recovery plants. He earned a B.S. degree from the University of Vermont in 1976 and an MBA in 1989 from New York University.

RICHARD D. STAPLETON is Executive Vice President & Secretary for The Lane Construction Corporation. In his over twenty-five year association with Lane he has had exposure to almost every method of construction in the heavy construction industry. His expertise includes administration and management of construction contracts for a variety of owners including some twenty state department of transportation, the U.S. Army Corps of Engineers, The U.S. Navy and the U.S. Air Force, Washington MTA, several airport authorities and many private industrial firms. Dick holds a BA from Lehigh University which he earned in 1958; JD 1961 from University of Connecticut; and an LLM 1962 from Boston U.

JAMES P. STROBEL is a Superintendent for Yonkers Contracting Company Inc. He earned a BSCE and an MSCE from New Jersey Institute of Technology in 1984 and 1990. For Yonkers he works in a supervisory capacity on various highway, bridge, tunnel and foundation projects. Before joining Yonkers, Jim was a Superintendent Project Engineer for Thomas Crimmins Contracting Company at which time the foundations for 60 Wall Street and 757 Fifth Avenue were successfully completed. Currently for Yonkers he is Superintendent, on the rehabilitation of bridge structures for the New England Thruway in the Mamaroneck area.

JOHN J. SULLIVAN is President & CEO of Perland Environmental Technologies, Inc. The firm is a hazardous waste remediation concern founded by Perini Corporation, Ashland Technology, and Versar. Earlier in his career, John was affiliated with Charles T. Main, Inc., of Boston an engineering and construction company prominent in the field of hydroelectric and other power projects which include paper mills and other work all around the world. John rose with that firm to become President. He holds a BS in Chemical Engineering from Villanova and a Post Graduate Degree in Nuclear Engineering from the Oak Ridge School of Reactor Technology.

DAVID E. THOMPSON is president of Haley & Aldrich, Inc., a firm performing geotechnical engineering, design services for tunnels, foundations and other underground construction. Dave holds a Bachelors Degree in Civil Engineering (1962) and a Masters in Geotechnical Engineering (1968) from Tufts University. He also did Post Graduate work at Massachusetts Institute of Technology during 1969/71. He is active in many professional societies including the American Society of Civil Engineers, American Arbitration Association, Society of American Military Engineers and the Deep Foundations Institute.

ALAN W. TODD is manager of Engineering & Estimating for the J. A. Jones Construction Company for their heavy, civil and marine group. He holds a BS degree in Agricultural Engineering which he earned in 1961 from Cornell University a BSCE from University of Connecticut (1963) and an MSCE (1966) from Stanford University. Prior to joining J. A. Jones in 1985 Alan was affiliated with Raymond International and several Joint Ventures performing work on major projects. Immediately after earning his masters degree from Stanford in 1966 he worked as design engineer for the Joint Venture building the BART Transbay Tube Tunnel from San Francisco to Oakland. A few of the other notable projects he was involved with during his twenty-five year career were: Chesapeake Bay Bridge; Second Hampton Roads Tunnel; Diego Garcia in the Indian Ocean; Port Expansion in Guayaquil, Equador; Submarine Loading Lines in Trinidad, W. I. and LNG Receiving Terminal in Cove Pt., MD.

W. D. "TOBY" WIGHTMAN is Vice President of Morrison Knudsen's Underground Division. In this capacity he is responsible for all that firm's tunneling and underground construction worldwide. He has over twenty-five years on underground and heavy construction experience. His introduction to tunneling began as a surveyor on the Tehachapi Crossing Tunnels, a part of the California Water Project. He continued with assignments on major projects including the Bienheim Gilboa Pumped Storage Power Projects; New York City Sewer Tunnels and various Washington, D.C. and Atlanta subway projects. Toby holds a Bachelor's Degree in Civil Engineering from Clarkson University (1966).

Tunnel Executive Dead at 90

FRANK P. RAGONESE died at Good Samaritan Hospital in Baltimore after a heart attack on May 16, 1992. He was 90.

Born in Cesaro, Sicily, Frank learned the construction trade while working with his father in Sicily and in southern France.

After the death of his parents, he supported a younger brother and two sisters, bringing them to the United States shortly after he came to this country at age 19.

Frank and a brother-in-law started Square Construction Co., in Cleveland in the mid 30s. The firm specialized in tunneling through both rock and soft dirt. In 1940 the company moved to Baltimore gaining prominence in their field.

Although he retired many years ago as the owner of the Square Construction Co., in Towson, Frank visited the office daily to manage real estate and other investments.

He is survived by a daughter, Norma; two sons, Paul P. and Edward B; a sister, Dina Scavilli; four grandchildren; and three great-grandchildren.

Students' Day 1992

On Friday, April 10, 1992, The Moles Education Committee held their Annual Students' Day field trip. Over one hundred fifty student engineers and their civil engineering professors met at the Tweed Courthouse on Chambers Street in Manhattan. After receiving "hard hats" and partaking of coffee and pastries, the general presentation began with a welcoming introduction by George Tamaro, Chairman of the Education Committee. This was followed by a presentation of the Federal Courthouse site by Timur Galen, Vice President, Deputy Project Director for Bechtel Park Tower and Joel Moskowitz, Senior Associate with Mueser Rutledge Consulting Engineers.

An introduction to the Federal Office Building site was made by Joseph Ross, Executive Vice President of Tishman Foley Partners; William Sparacin, Senior Associate of MRCE; and Michael Parrington, Archeologist for the General Services Administration. The students were divided into four groups before leaving the briefing to go into the field to see the actual work in progress. At the Federal Office Building site, they were shown foundation mat construction; raker bracing adjacent to the Broadway subway tunnel; preparation for further concrete placement; temporary sheeting and earth anchors; as well as the underpinning of 22 Reed Street; and the archeological work underway. At the Federal Court House site, students were able to observe pile driving; sewer construction with associated sheeting and bracing; general excavation; and cross lot bracing at the narrow southwest corner of the site.

At the conclusion of the field trip, everyone returned to the Tweed Courthouse assembly area where box lunches were distributed and those who had technical questions about the work were able to get the answers from the many Mole members in attendance serving as guides for the day.

Our thanks to everyone who helped in the success of the day and especially to those contracting firms who donated Hard Hats which are an essential part of the program.

B U S I N E S S M E E T I N G

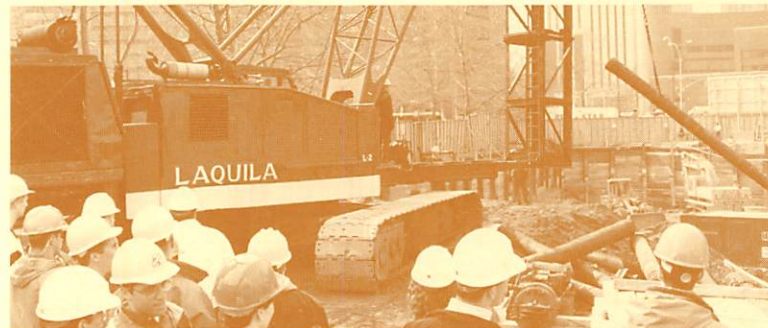


TOM DAILEY, Second Vice President with new member, V. DENNIS MILLGARD



LEN E. VAN HOUTEN, ROBERT C. KOCH, REMY P. PAPP and FRANK MCGAHAN.

S T U D E N T S D A Y



TONY MAZZO, Vice Chairman Education Committee assists student engineer with Hard Hat liner.

