

NEWS BULLETIN

AN ASSOCIATION OF INDIVIDUALS

HOLING



OF THE MOLES

ENGAGED IN HEAVY CONSTRUCTION

THROUGH

JULY 1989

ANNUAL BUSINESS MEETING



Photo above: SHERWOOD E. LILES, III, (left) The Moles' 1989/90 President accepts gavel at Annual Business Meeting & Dinner from retiring President, GERARD J. CARTY (Right).

Photo below: ROBERT C. KOCH, The Moles' 1989/90 Second Vice President receives retiring Treasurer's Citation from GERARD J. CARTY at Annual Business Meeting & Dinner, May 3, 1989.



CLAMBAKE

•
TUESDAY
AUGUST 8, 1989

•
TRAVERS ISLAND
PELHAM, N. Y.

•
REGISTRATION
11 A.M. to 6 P.M.

LUNCH
11:30 A.M. to 2 P.M.

WHEEL OF FORTUNE
DRAWINGS
2:30 P.M. and 4:30 P.M.

OUTDOOR GAMES
1 P.M. to 5 P.M.

SOFTBALL GAME
3 P.M. to 5 P.M.

ENTERTAINMENT
1 P.M. to 6 P.M.

SWIMMING and TENNIS
ALL DAY

SURF & TURF DINNER
SERVED PROMPTLY at 6:30 P.M.

PRIZE AWARDS
AFTER DINNER

ANNUAL BUSINESS MEETING

Two hundred twenty five members were present at the Annual Business Meeting & Dinner held on May 3, 1989. This included twenty nine of the thirty two new members elected to membership effective May 1, 1989. Photos of those new members present appear on pages 4 and 5 along with brief bios on all thirty two. Conviviality reigned supreme at the Cocktail Hour and after a superb dinner taken care of by the pleasant banquet staff of The New York Hilton, retiring President Gerard J. Carty called the meeting to order. Gerry welcomed everyone to the 51st Annual Business Meeting; expressed regrets received from those members who could not be present; called a "moment of silence" for those thirty three members who had passed away since the 1988 Business Meeting; introduced the new members; presented Life membership to Vic Hertslet and Harry Wartur.

After receiving brief reports from the Treasurer, Secretary and Committee Chairmen, Gerry introduced the Officers and Trustees elected for the coming year. Starting with the Trustees, each serving a three year term, he introduced JOHN F. DONOHOE, Moretrench American Corp.; MARTIN N. KELLEY, Kiewit Engineering Co.; CHARLES B. MOLINEAUX, Zorc, Rissetto, Weaver & Rosen; DANIEL J. RAGO, Yonkers Contracting Co., Inc.; and RICHARD N. WEEKS, Weeks Marine, Inc. Gerry then introduced the new Officers for the 1989/90 year, starting with the Sergeant-at-Arms, WELDON S. (BOB) BOOTH, W. S. Booth & Company; Secretary, MICHAEL J. UCCI, AMCA International Corp.; Treasurer, CHARLES F. VACHRIS, Consulting Engineer; Second Vice President, ROBERT C. KOCH, Yonkers Contracting Co., Inc.; First Vice President, CHARLES H. CAMPBELL, Peter Kiewit Sons Inc.; and President, SHERWOOD E. LILES, III, North Star Construction Corp.

As Gerry introduced the new President, he turned the gavel "symbol of Office" over to him. Sherwood's first official act as President was to present retiring President Gerry Carty with the traditional past president's citation and pin. Gerry thanked Sherwood; the



LIFE MEMBERS (40 Years) M. HARRY WARTUR (left) and VICTOR B. HERTSLET present at the Annual Business Meeting & Dinner on May 3, 1989 received Life Membership effective May 1st, 1989.

● BERNARD A. RICHARDS, President of Slattery Investors Corporation, headquartered in Lake Success, NY, was honored on May 31, 1989 by Baruch College at their annual graduation when he was awarded the President's medal for outstanding service to the college.

● C. RICHARD WALTER is retiring as President of Hazen and Sawyer, engineers headquartered in NYC effective July 31, 1989. Dick Walter joined the firm in 1952 and has contributed significantly to its growth from a five member staff to a present staff of 350. In addition to his many achievements with the firm, he has made many contributions to the consulting engineering profession through active participation in numerous organizations including the Water Pollution Control Federation (President New York Section, 1983), New York Association of Consulting Engineers (President 1976-1978) and the American Consulting Engineers Council Life/Health Plan of which he was a member of the Board of Trustees and later Chairman. Dick will relocate his permanent residence to Hilton Head, South Carolina where he has vacationed for many years and will maintain a secondary residence in Westchester, NY.

ANNUAL BUSINESS MEETING (Continued)

Officers and Committee Chairmen; the Walsh and Atkinson Companies; and Mrs. Gallagher for their support throughout this past year. He said, "it has been an honor to be President of The Moles, and a high point in my career". He turned the meeting back to Sherwood who concluded with "membership gives this organization its strength; and the more we all participate the stronger it will be".

HOMEPORT DEDICATED *many MOLE MEMBERS recognized for expertise on project*



On Wednesday, May 3, 1989 the pier for the "Homeport" at Staten Island, NY was dedicated by the U.S. Navy. The pier will accommodate the Surface Action Group, centerpiece of which is the battleship U.S.S. Iowa and six escort vessels.

At the ceremony, the General Contractor, Yonkers-Weeks, a JV received a letter of Commendation from RADM. Benjamin F. Montoya (CEC, U.S. Navy) Commander of the Naval Facilities Engineering Command. Receiving the Commendation were Mole Members, CARL E. PETRILLO, President of Yonkers Contracting and RICHARD N. WEEKS, President of Weeks Marine. Also cited in the commendation were Mole Members, ROBERT C. KOCH, Project Executive, FRANK McGAHAN, Project Manager, both of Yonkers Contracting and EUGENE F. KELLEY, Vice President of Weeks Marine.

In his presentation speech, Admiral Montoya referred to the pier as "a monument to American engineering ingenuity and construction capability". He said further that it was amazing that a project

of this size was constructed on time and under budget in the New York area.

The pier, 1410 feet in length, was constructed on 401 plumb piles 54" in diameter, the longest of which was 224 feet, the longest piling ever cast and driven in one piece. This was a result of a Value Engineering proposal from the contractor, designed and developed by JAMES P. GOULD with DOMINIC A. ZARRELLA of Mueser Rutledge Consulting Engineers, also Mole Members. As originally designed, the pier, had 752 concrete piles, 24" square and 36" cylindrical with batters both transverse and parallel to the pier. The redesign consisted of all plumb piles with the follow-on construction being largely pre-cast. Both made the pier more "constructible".

The pier which has received "national acclaim" according to Admiral Montoya, was the subject of "cover-story" articles appearing in Civil Engineering and ENR both widely read technical construction magazines.



ALDEN P. YATES died of colon cancer at Pacific Presbyterian Medical Center in San Francisco, on April 12, 1989. He was 60; and had been active as recently as March 27 when he attended a Bechtel board of directors meeting.

Alden was one of only two non-family members to be President of Bechtel Group Inc., He succeeded George Schultz as President and Chief Operating Officer in May 1983 when Schultz left to become U.S. Secretary of State.

A 1951 engineering graduate of Stanford University he joined Bechtel in 1953 after serving as a lieutenant in the U.S. Coast Guard. Starting as a field engineer at Morro Bay Steam Power Plant, Alden held positions of increasing responsibility during his 35 year career with Bechtel.

He was elected to membership in The Moles in 1972 and served two years on the publicity committee until his appointment as manager of a petroleum and chemical division in Kuwait in 1976. He was based in London in 1980 and ran three Bechtel divisions and was on the firm's Executive Committee.

He was a member of the National Academy of Engineering; the Conference Board, The advisory council of Stanford University's School of Engineering and the California Business Roundtable.

He is survived by his wife of 38 years, Dawn; six children, Stephen, Michael, Jeffrey, Russell, Karen Weiss and Patricia Mitchell; and six grandchildren.

NEW MEMBERS



Sitting, front row left to right: Christopher R. Ryan, Joseph P. Welsh, Brice R. Smith, Jr., Pasquale P. Diccianni, Raymond R. Oneglia, William S. Lincoln, Leon C. Heron, Jr. Standing, back row left to right: Gary A. Almeraris, Louis S. D'Amico, John E. Roe, Michael F. Flynn, Michael W. Bianchini, Alan G. Hobelman, Andrew S. Fisher, Richard H. Di Louie, Jr.

GARY A. ALMERARIS is Manager of Construction for Skanska (U.S.A.) Inc. In this capacity he is involved in planning and construction for the firm's tunnel projects and major civil works. Gary earned a BECE in 1975 from City College of New York and an MS in Management from Worcester Polytechnic Institute in 1981. He started as a Field Engineer with MacLean Grove & Co., Inc., after graduation from CCNY and has held steadily increasing responsible positions during his 14 years in heavy construction with an emphasis on subway and tunnel work. He holds Professional engineer Licenses in the States of New York and Connecticut and is a licensed Blaster in New York, Massachusetts and with the U.S. Dept of Labor Bureau of Mines. He is a member of the American Society of Civil Engineers, British Tunnelling Society, Society of Explosives Engineers, Tau Beta Pi Alumni and Chi Epsilon Alumni. His publications include: 1987 Rapid Excavation & Tunneling Conference "Concreting The Deep Shafts and Tunnel for NYC Water Tunnel No. 3", 1987 ASCE New York Metropolitan Construction Seminar "Conventional Drill & Blasting Tunnel Methods" and 1985 Rapid Excavation & Tunneling Conference "High Speed Tunneling Beneath the Streets of Manhattan."

ERNEST ALVAREZ is a Vice President with Frederic R. Harris, Inc. A soils and foundations specialist, he has over thirty years of experience in all facets of engineering and construction. Major projects include: ports and harbors, petroleum handling and storage facilities, roads, airfields, railroads and subways, floating nuclear power plant sitings, foundations and special marine structures, in Europe, Central and South America, Africa and the United States. Ernie earned his Civil Engineering degrees from Polytechnic Institute of Brooklyn, NY in 1955 and Columbia University Graduate School of Engineering in 1960.

ALFRED H. BRAND a partner in the NY based firm of Mueser Rutledge Consulting Engineers has been with them for 21 years. Progressing through a series of geotechnical and foundation engineering assignments of increasing responsibility in support of the firm's services to the construction industry, Al became an Associate and more recently a Partner. He earned a Bachelor of Engineering degree in 1967 from The Cooper Union and a Master of Science in 1969 from Cornell University. He is a member of the American Society of Civil Engineers, National Society of Professional Engineers and The Cooper Union Alumni Association.

MICHAEL W. BIANCHINI is a Vice President of Gates Construction Corp., headquartered in Little Ferry, NJ. Responsible for estimating, engineering and management of the firm's heavy and marine construction, Mike's experience has been extensive. He is a graduate of Newark College of Engineering where he earned a B.S. degree in Civil Engineering in 1966.

ARTHUR J. BLATTNER is Area operations manager at the Metro NY division of Perini Corp., responsible for all construction activities in the new York Area. A 1970 Civil Engineering graduate of Manhattan College he went immediately to work for Cayuga Construction gaining expertise on subway, bridge and foundation construction in New York, New Jersey and Maryland. Just prior to joining Perini, Art had been affiliated for eight years with Defoe Corp., as a Project Manager and Estimator.

THEODORE J. CIVETTA, JR., is Project Manager for John Civetta & Sons, Inc. After graduating from Manhattan College with a degree in Civil Engineering, he spent several years as Project Manager for the Civil Projects Management Branch of the U.S. Army Corps of Engineers. While with the Corps, he managed multi-million dollar projects, negotiating engineering design contracts and coordinating design and construction work. He has authored several reports for the Corps concerning future projects around the New York Harbor and coordinated design and construction of several sections of the Saw Mill River Flood Control Project in Westchester County. He received his Professional Engineer's License in 1981 and returned to the family owned concern, John Civetta & Sons, Inc., where he had spent his college years and a year following. As Project Manager, Ted not only runs the Project but incorporates estimating and design to complete the Project. Among recent Projects were: One Equitable Tower Rock Excavation and Foundation, the 205 East 65th Street Excavation and Foundation Project and the Zeckenforf Tower Excavation and Concrete Project at Union Square. His dad, Ted, Sr., is also a Mole member.

JAMES COTTON is President of Metric Constructors, Inc., headquartered in Charlotte, North Carolina. In this capacity he has had responsibility for the full range of heavy construction work performed by the firm including marine, dams, bridges, etc. He has had a 25 year career with The Jones Group having been Sr. Vice President of J.A. Jones Construction Co., immediately prior to his current position. He has a BSME degree from the University of Miami which he earned in 1963 and an MSME from Rensselaer Polytechnic Institute earned in 1965.

RICHARD L. CURL is Vice President of M-K's Eastern Region Construction Division. Dick joined Morrison Knudsen Co., in 1981 after a distinguished military career. Throughout his career he has been responsible for numerous domestic and international projects. Among his assignments with the U.S. Army Corps was as District Engineer (Kansas City District); MX Program Manager; and Israeli Air Base Contracting Officer. He retired a Colonel. For M-K he has held positions of responsibility including Project Manager of Cerrejon Coal Developing Project and Ok Tedi Mining Development Project. He earned his BS Engineering degree from the U.S. Military Academy in 1956 and a Masters in 1961 from the University of Illinois.

LOUIS S. D'AMICO is a Vice President with Slattery Associates, Inc. He has been with the firm since graduating from the Polytechnic Institute of Brooklyn in 1972. His assignments to date have included a wide variety of difficult major construction projects including: several Water Pollution Control Projects, contracts involved in the Widening of the Long Island Expressway, and intricate rehabilitation jobs for the New York City Transit Authority. In his position Lou is responsible for the estimating, subcontracting of various phases of the project and the follow-up of the detailed procedures required by Owners.



Sitting, front row left to right: Alfred H. Brand, Ernest Alvarez, Theodore J. Civetta, Jr., Dino Tomasetti, Timothy R. Maloney, James Cotton, Charles T. Hennigan. Standing, back row left to right: William G. Mulligan, Zohrab B. Marashlian, Arthur J. Blattner, Henry Fusillo, Richard L. Curl, William S. Zoino, James R. Kesl.

RICHARD H. DiLOUIE, JR., earned his engineering degree from Stevens Institute of Technology in 1974. He is a Vice President in charge of construction, engineering and estimating for Kerr Construction, Inc., headquartered in Elmwood Park, New Jersey, Starting with Spencer, White & Prentis, Inc., as an Apprentice Engineer in 1973 within a cooperative program established by Stevens, Rick was offered a position with the organization in 1974 when he graduated. During the 8 years he was affiliated with SW&P he advanced steadily to the position of Chief Engineer/Area Manager; involved in all aspects of heavy construction including difficult shoring, underpinning and retaining structures in the capacity of Design Engineer, Estimator and Contract Negotiator. Rick has been with Kerr Construction since its inception in 1982.

MICHAEL J. FLYNN is Chairman of the Board and President of Slattery Associates, Inc. The firm is engaged in some of the most difficult construction contracts in the northeast area. Mike earned a degree from the University of Ireland and has spent over twenty years in construction; much of these years as an Executive with major contractors.

PASQUALE P. "PAT" DICCIANNI has been with Lone Star Industries for the past 25 years and has progressed through the ranks from a cement order clerk in 1964 to President, Northeast Operations and President of New York Trap Rock Corp., (Lone Star's crushed stone subsidiary) and a Corporate Officer of Lone Star. Pat's contributions to the construction industry include a wide array of professional organizations. He is a past Director of the Concrete Industry Board and currently serves as a Director of the National Stone Association. He has served on working committees for the Construction Industry Council, Empire State Concrete and Aggregate Producers Association, the Portland Cement Association, the New Jersey Asphalt Pavement Association and the New Jersey Ready-Mix Association, he is a graduate of Archbishop Molloy High School; Pace College, where he earned a Business Administration degree in 1970; and Lone Star's Management Programs.

DINO TOMASSETTI is President and Chief Executive Officer of Laquila Construction, Inc. The firm, founded by Dino has performed extensive foundation and other heavy construction work in the New York City area for the past thirty years. He is an alumnus of L'Universita Di Laquila, Italy. (Continued on Page 6)

NEW MEMBERS

(Continued from Page 5)

ANDREW S. FISHER, partner in the law firm of Fisher & Fisher is heavily involved in legal work with the construction industry representing a variety of heavy constructors, architects and engineers. He is also President of Kenandhal developers and constructors. He was educated at Long Island University; and St. John's University School of Law where he attained both B.A. and J.D. degrees. Some important legal work involving construction which has enhanced Andy's reputation has been the classic action taken against the Board of Water Supply by the JV on the City Water Tunnel #3; one of the Israeli Air Base projects; and most recently a major hotel project in New York City.

HENRY FUSILLO is Manager of Special Projects for George A. Tomasso Construction Corporation. In this capacity he is responsible for estimating and supervision of the firm's work. After receiving his Civil Engineering degree from New York University in 1951 he immediately started as design draftsman for a consulting engineer only to leave for two years Military Service where he served as 1st Lieutenant in a Construction—Battalion. Since that time, Hank has been responsible for estimating multi-million dollar heavy construction projects with several Mole-affiliated construction firms, among which were: Horn Construction, Schiavone and M-K.

THOMAS J. HENDERSON is Chairman, President and Chief Executive Officer of Guy F. Atkinson Company of California. In this capacity he is in charge of the corporation's total general construction activities. Tom has had a varied career with Atkinson, serving both in the construction and manufacturing operations. Tom has both a bachelor's and master's degree in civil engineering from Massachusetts Institute of Technology. After graduating he served as an Officer for three years with the U.S. Navy Civil Engineer Corps.; and a short period with a construction company in Chicago before joining Atkinson in 1961. He held the positions of Vice President; a Senior Vice President and Group Manager; President and Chief Operating Officer, to his current position as Chairman, President and CEO of the firm.

CHARLES T. HENNIGAN is Senior Partner of the consulting engineering firm, Howard Needles Tammen & Bergendoff. In this capacity Chuck directs the firm's operations in New Jersey, Delaware, Pennsylvania and West Virginia. He is currently responsible for overseeing the firm's general consulting activities on the \$2 billion widening of the New Jersey Turnpike. A civil engineering graduate of City College of New York, he has had extensive planning, design and construction monitoring experience in many areas of the U.S. He was Partner in Charge of the Richmond Metropolitan Authority in Richmond, VA., designing and constructing an urban toll road system. He held the same position for the Orlando East-West Expressway; and has been involved with the work on all the major improvements to the New Jersey Turnpike since 1965. He has been affiliated with HNT&B since graduating in 1954 and became a Partner in 1969.

LEON C. HERON, JR., is a Vice President and District Manager for Kiewit Eastern Co., A subsidiary of Peter Kiewit Sons' Inc. In this capacity he is responsible for bidding and construction of all heavy projects in the New England Area, including: subway, hydro-electric powerhouses, bridges and all phases of marine work. He earned a BCE degree in 1969 and an MSCE in 1971 from Drexel University in Philadelphia, PA. A few of the projects he has been in charge of for Kiewit were: the South Cove Tunnel project in Boston; the Fort McHenry Tunnel in Baltimore; and the Bullwinkle offshore oil platform.

ALAN G. HOBELMAN is a Vice President for The George Hyman Construction Co., headquartered in Bethesda, Maryland. Alan has served the firm for over 15 years, the past 6 in his current position where he is responsible for estimating, designing and construction of all foundation work for the company. This includes excavation support systems, underpinning deep foundations, dewatering, ground modification and temporary structures for buildings, transit facilities, and marine structures. He earned a B.S. in Civil Engineering in 1970 and his M.S. in Structural Engineering in 1972 from Rutgers University.

WILLIAM S. LINCOLN is a Vice President with Yonkers Contracting Co., Inc. He has over thirty-five years experience in construction both in the field and office. In his current position with Yonkers as Executive-in-Charge of their highway and heavy construction projects he has been responsible for successfully completing major projects in New York and New Jersey. Bill has a Bachelor of Science degree in Industrial Engineering from Fairleigh Dickinson University.

TIMOTHY R. MALONEY is President of Geotech Services, Inc. Geotech is a specialist supplying geosynthetics and construction specialties for major construction projects; and is a leader in the application of expansive grout for the sensitive demolition of rock and concrete. Tim has been actively associated with the heavy construction industry since 1974 when he graduated from Fordham School of Business Administration and joined the family firm, Explo Incorporated a distributor of commercial explosives in the metropolitan area. Tim is a third generation Mole following in the footsteps of his grandfather, Ben R. Maloney and his dad, Robert J. Maloney.

ZOHRAB B. MARASHLIAN is Area Manager for Perini's Metro Division in the Hastings-on-Hudson New York office. He has been with Perini for over seventeen years and has held responsible positions on major projects for the firm. He has a Bachelor of Science degree in Civil Engineering from American University of Beirut, Lebanon which he earned in 1970 and studied hard Rock Mechanics at Columbia University. He is currently working on his Masters at Columbia.

JAMES R. KESL is Chairman — Western Region of Corroon & Black, Inc., a firm specializing in construction insurance and surety requirements. He has been with C&B for the past ten years. Prior to that he served with DuPont Explosives Products where he was responsible for sales and technical activities in construction throughout the U.S. He earned a Mechanical Engineering degree in 1952 and degrees in Business Administration from General Motors Institute of Technology and Southern Illinois University.

JAMES P. MORIARTY is President of T. Moriarty & Son Inc., a contracting and engineering firm founded by Jim's father performing construction of pump stations, electric substations, pipe lines, foundations and railroad construction. Unusual jobs featuring mechanical installations are a particular specialty of the firm specializing in public works for the Transit Authority, Port Authority and other public agencies. Jim is a 1954 civil engineering graduate of Manhattan College.

WILLIAM G. MULLIGAN is Executive Vice President of Ingersoll-Rand Company a major supplier of road machinery, portable air compressors and rock drills to the heavy construction industry world-wide. He also holds the title of President, I-R's Construction Equipment Group. Bill holds a Bachelor of Science degree in Mining Engineering from Lafayette College; and has completed advanced management programs at Harvard Business School and Indiana University. He joined the company immediately after graduation in 1952 as a student trainee and has held various sales and managerial positions. He was elected Executive Vice President in 1976 and in 1982 was given the added responsibility of President of the Construction Equipment Group. In that capacity all construction equipment manufactured by Ingersoll-Rand Company anywhere in the world is under his management.

RAYMOND R. ONEGLIA is Executive Vice President of O & G Industries Inc. In this capacity he is responsible for the overall management of the firm's Heavy and Highway Division. Ray has been in heavy construction since his college days when he worked during summers as a Laborer to Rod Man on survey crews. A 1970 graduate of Union College, Ray joined the family firm immediately following and worked through the various phases to his current position. He is a Board Member of the Connecticut Construction Industries Association, the University of Hartford Construction Institute and the Connecticut Road Builders Association of which he is also a Past President.

JOHN E. ROE is Chairman of the Board of City Underwriting Agency, Inc. The firm, founded by his dad, is engaged in bonding and insurance for the construction industry. After graduating from Mangattan College with a degree in Civil Engineering in 1956, John joined the firm of Praeger-Kavanagh where he worked on major highways, bridges, buildings and subway projects. He served as a Commissioned Officer in the United States Navy and graduated from Deep Sea Diving School as a Diving Officer and served three years in the Pacific aboard the U.S.S. Apache as Executive Officer and Diving Officer. He presently holds the rank of Captain in the U.S. Naval Reserve. Upon completion of his Military Service John accepted the opportunity to join City Underwriting Agency as Vice President in Charge of Engineering. He later became President and now serves as Chairman. He is a member of numerous professional organizations including the American Society of Civil Engineers and the Society of Military Engineers.

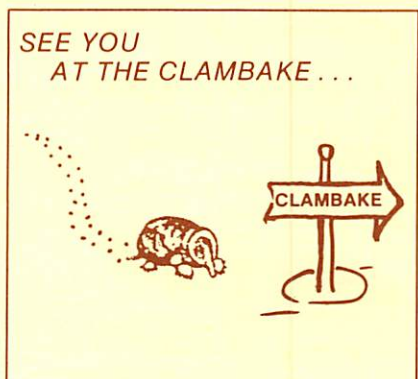
CHRISTOPHER R. RYAN is President of Geo-Con, Inc., a specialty contractor operating nationwide in the field of soil improvement, slurry walls, underground pollution control, hazardous waste cleanups, earth retention systems, etc. A 1969 graduate from Massachusetts Institute of Technology, he has several degrees including a Masters from that institution.

BRICE R. SMITH, JR., is Chairman of the Board and Chief Executive Officer of Sverdrup Corporation. The prominent Missouri based engineering firm, supplies professional services for capital facilities including design of major Transportation and Public Works such as Bridges Tunnels and test facilities. Brice joined Sverdrup in 1952 and has been actively engaged in many of their major projects over the years both in the United States and Thailand. A 1951 civil engineering graduate of the University of Missouri, he received his masters degree in civil engineering from MIT in 1952 and has completed courses in Advanced Management at Harvard University and University of Hawaii.

KENNETH A. TULLY is President of Willets Point Contracting Corp. The firm located in Flushing, NY performs heavy construction contracts including sewer, water main, bridge, excavation, paving construction, and other affiliated work. Ken has been very active in the General Contractors Association of New York and is currently serving as President of the organization.

JOSEPH P. WELSH is Vice President of GKN Hayward Baker. In this capacity he oversees the marketing technical activities of the firm's six U.S. and two Canadian offices. GKN Hayward Baker specializes in innovative foundation projects and Joe is considered an expert in the field of soil modification and stabilization. A 1955 civil engineering graduate of Villanova University, he took Master Courses in Civil Engineering from the University of Pennsylvania and Villanova. A member of numerous professional organizations Joe spends a considerable amount of time giving lectures or making presentations at college and professional seminars.

WILLIAM S. ZOINO a Senior Principal with Goldberg-Zoino & Associates, Inc., earned a B.S. in Civil Engineering in 1954 from Massachusetts Institute of Technology and in 1955 received his Master's degree. The firm provides geotechnical engineering services for construction of building foundations, tunnels, highways, airports, earth dams and remediation of hazardous waste pollution. Bill is active in numerous professional organizations some of which he has held leadership positions.



ANNUAL BUSINESS MEETING AND DINNER — MAY 3, 1989

CHARLES D. MORRISSEY died of a heart attack on June 6, 1989 in Nairn, Scotland. He was 63.

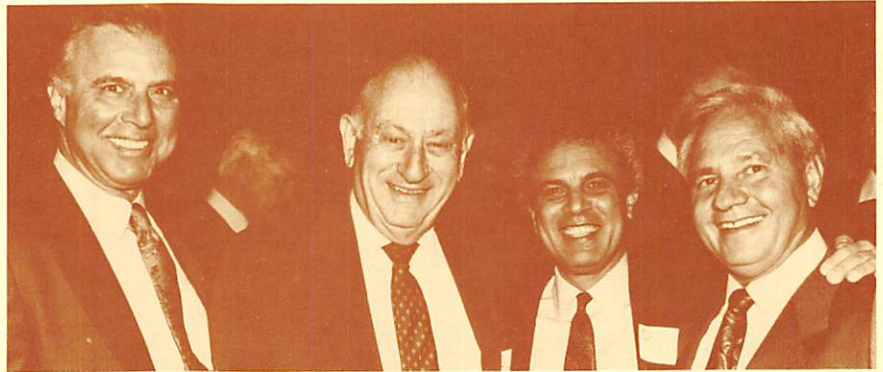
Chick was a partner in the Manhattan based consulting engineering firm of Basil-Morrissey P.C. He had been president of Basil Engineering Corporation.

Born in the Bronx, NY, he graduated from Manhattan College with a Civil Engineering degree in 1949 and received a Master's degree from New York University in 1952. He joined the firm which was then known as Madigan-Hyland in 1952 and rose through the ranks to become Executive Vice President of URS/Madigan-Praeger, Inc., a position he held in 1973 when he was elected a member of The Moles. He served on the Program and Award Committee for The Moles during the period from 1977/1981. He was a fellow of the American Society of Civil Engineers and the American Consulting Engineers Council and was a member of the American Arbitration Association.

He is survived by his wife, Monica; two sons, David and James; two daughters, Karen Topp and Christine Duncan; a sister, Sister Margaret Morrissey and two granddaughters.

Lemley Named To Important Post

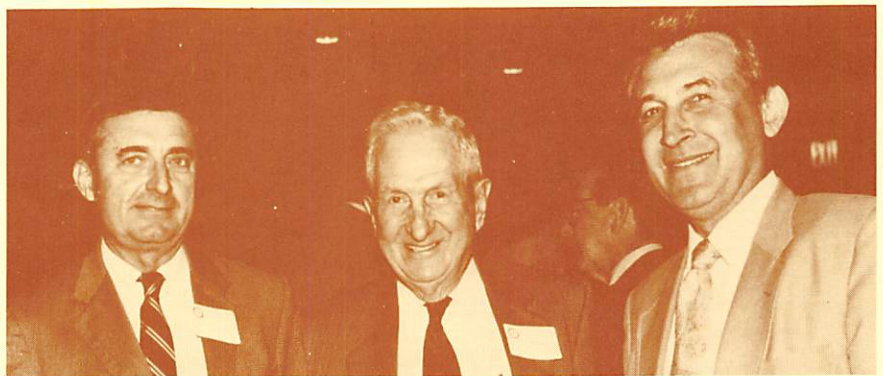
- JACK K. LEMLEY has been named Chief Executive Officer of Transmanche Link, the Anglo-French jv building the Channel tunnel. Jack started his assignment in London mid-May of this year when he left Lemley & Associates Inc., a management consulting firm he established in Boise last year. Jack announced that the firm will continue and a partner will assume his projects. The appointment increases significantly, the U.S. participation in this highly prestigious project.



JOE MARTOSELLA, GEORGE FOX and TONY ALBICOCCO congratulate new member DINO TOMASETTI on right



TONY BERMAN (left) and HERB WASSERMAN (right) congratulate new member MIKE FLYNN (center)



SHERWOOD E. LILES, III, CHARLES L. GUILD and JOHN W. FOWLER



HAL HUNT and ART FOX reminisce