

NEWS BULLETIN

AN ASSOCIATION OF MEN



OF THE MOLES

ENGAGED IN HEAVY CONSTRUCTION

HOLING

THROUGH

JULY, 1983

ANNUAL BUSINESS MEETING



Retiring President, NORMAN A. NADEL, (right) presents 1983/84 President, JOHN D. SAUNDERS with symbol of Office at May 4th Dinner and Business Meeting.

TWO HUNDRED FIFTEEN Mole Members were present for the annual business meeting & dinner held on May 4th which included twenty two of the twenty seven new members. After the traditional cocktail hour and a superb dinner, retiring President Norman A. Nadel called the forty fifth annual business meeting of The Moles to order.

Conspicuously absent and sorely missed was the Secretary of The Moles, Jack Walle, who was recuperating from an injury resulting from a fall he had some time prior to the meeting.

After greeting the members for the last time as President of The Moles,

Norman said, "it seems like only a few weeks ago when Sal DeSimone introduced me and handed the gavel to me as President and now here I am, my last night!"

After observing a "moment of silence"

(Continued on Next Page)

**THE MOLES'
ANNUAL
CLAMBAKE**



**THURSDAY
AUGUST 4, 1983**



**COLONIE HILL
Hauppauge — L. I.
New York**

RICHARD J. REDMOND, Chairman of the Program Committee has advised that the Committee has planned a "good time" for all who come out on Thursday, August 4.

In addition to the fine food, free beer, and other ala carte drinks, there will be the traditional outdoor games, prizes, etc. Two swimming pools, one outdoors and one indoors, along with the use of a completely equipped health spa is all included in the price of your Clambake ticket. For those who want to play golf, Colonie Hill has a super course for an \$8 green fee to be paid directly to the club; electric carts (2 persons) \$15 tax included; all available for Clambake ticket holders. The two "wheel of fortune" drawings will be held and cameras awarded to the lucky winners at the 2:30 and 4:30 drawings. A surf & turf dinner will be served at 6:30 p.m. and a Hawaiian Review, complete with fire and knife dancers is scheduled for after dinner.

So come on out! Don't put it off! Reserve your tickets now! Call a friend or two and invite them to spend the day with you!

ANNUAL MEETING

(Continued from Page 1)

for those members who had passed away over the past year, President Nadel introduced the new members elected at the April 5th Executive Committee Meeting. (Photos appear on Pages 4 and 5 of those who were present together with brief bios on all twenty seven)

Four of the six members who were to receive their "Life Membership" were in attendance. They were: Charles B. deLeon, Frank and John DiMenna and Jack Murphy. (see photo, page 7)

After receiving reports from the Treasurer and the several committee chairmen, President Nadel introduced the new Officers and Trustees. Starting with the Trustees he introduced, Carl E. Buckley, partner in the law firm of Buckley, Treacy, Schaffel, Mackey & Abbate; Stanley Merjan, Vice President with Underpinning & Foundation Constructors, Inc.; and J. Rich Steers, President of J. Rich Steers Inc. (all to serve a three year term) He introduced the Officers as follows: William J. McPhillips, Vice President for Weeks Dredging & Contracting, Sergeant-at-Arms; Treasurer, James C. Armitage, President of Armitage & Co.; Second Vice President, Robert S. Gates, Chairman, Gates Construction Company and First Vice President, Charles E. Mergentime, President of The Mergentime Corp. As retiring President Nadel handed the gavel over to John D. Saunders, President, Slattery Associates, Inc., he said, "John and I go back a long time, we worked together some thirty years ago; that was before either of us ever thought we would be Moles, much less President of The Moles."

President Saunders, said "Those of you who know me well, know that I'm not going to make a speech here tonight, but I will mention this: In the front of your By-Laws is a statement which tells you what The Moles is all about, the purpose of the Association." He quoted this as follows: "*The PURPOSE of the Association is to promote better acquaintance among those men engaged in the heavy construction industry to the end that past and future friendships and a spirit of fraternization among the members be fostered and cemented; that meetings and other gatherings be held to exchange construction information, and promote good fellowship among the members; that advancement of the heavy construction art be achieved, and outstanding performance*

PRESIDENT APPOINTS COMMITTEES 1983/84

President JOHN D. SAUNDERS has announced the appointment of members to the five standing committees for the 1983/84 year as follows:

MEMBERSHIP COMMITTEE — Chairman, J. RICH STEERS, J. Rich Steers, Inc.; Vice Chairman, ROBERT G. LENZ, Moretrench American Corp.; CHARLES M. AIKEN, Raymond International Builders, Inc.; CLAES G. BJORK, Skanska (USA) Inc.; ROCKNE E. BURNS, Tuscarora Construction Co., Inc.; JOSEPH A. DiCAROLIS, Schiavone Construction Company, Inc.; BERNARD A. GRAND, Slattery Associates, Inc.; DAVID G. HAMMOND, Daniel, Mann, Johnson & Mendenhall; JAMES A. LEONARD, JR., Walsh Construction Company; BERNARD P. MONAHAN, William L. Crow Construction Co.

PROGRAM COMMITTEE — Chairman, RICHARD J. REDMOND, MacLean-Grove & Company, Inc.; Vice Chairman, ROGER J. LUDLAM, S. J. Groves & Sons Co.; MORRIS BLITSTEIN, Slattery Associates Inc.; KEVIN B. CRIMMINS, Thomas Crimmins Contracting Co.; JOHN J. DOUGHERTY, JR., Associated Pile & Fitting Corp.; EUGENE J. FULLAM, Twin County Steel Service Inc.; FRANK GREGORY, Warren George Inc.; ROBERT C. KOCH, J. Rich Steers Inc.; DANIEL F. MEYER, Morrison-Knudsen Co., Inc.; CHARLES B. MOLINEAUX, JR., Perini Corp.; ALFRED G. WARD, Walsh Construction Co.

FINANCE COMMITTEE — Chairman, CARL E. BUCKLEY, Buckley, Treacy, Schaffel, Mackey & Abbate; ELMER B. ISAAK, U R S Company Inc.; SHERWOOD E. LILES, III, Tidewater Construction Corporation; JAMES E. MAHON, Walsh Construction Co.; ELMER A. RICHARDS, Mueser, Rutledge, Johnston & DeSimone; DUDLEY A. SAUNDERS, Slattery Associates, Inc.

(Continued on Page 3)

ANNUAL MEETING (Continued)

be recognized through Awards; and that, in the public interest, standards of construction be raised both as to engineering and as to business ethics." President Saunders continued, "this gentlemen, is what it is all about; nothing more involved than that."

Kuesel Elected Chairman

THOMAS R. KUESEL has been elected Chairman of the Board of Parsons Brinckerhoff Quade & Douglas, Inc., the principal professional services company of the Parsons Brinckerhoff group of firms, which offer engineering, architectural, planning and construction management services throughout the United States and abroad.

During his 36-year career with Parsons Brinckerhoff, Tom has gained international recognition as an authority of design and construction of tunnels and bridges. He has participated in the design of more than 80 tunnels and 100 bridges in 36 states, and has consulted on additional projects in 20 foreign countries.

He studied civil engineering at Yale University receiving a bachelor of engineering degree with highest honors in 1946 and a degree of master of engineering in 1947.

Elected to membership in the National Academy of Engineering in 1977 he is presently Chairman of a special committee of the Marine Board of the National Research Council investigating ship-bridge collisions. He is a fellow of the American Society of Civil Engineers and of the American Consulting Engineers Council; and is a member of the International Association for Bridge and Structural Engineering and of the British Tunnelling Society. He was co-editor of the Tunnel Engineering Handbook published in 1982 and has written more than 40 articles for technical journals.

● DUDLEY A. SAUNDERS retired as a Senior Vice President of Slattery Associates on June 1, 1983 after forty three years of outstanding achievement. He will remain as a consultant to the firm. Dudley served The Moles as Committee Member, Trustee and most recently as Treasurer.

● ALDEN P. YATES has been elected to the post of President at the Bechtel Group. The post was vacated a year ago when George P. Schultz became Secretary of State. Mr. Yates joined Bechtel thirty years ago as a field engineer and had been President of a subsidiary, Bechtel Petroleum, Inc., since 1980.

● FRANK M. WARREN, JR. has recently been named Executive Vice President of the J. A. Jones Construction Company, headquartered in Charlotte, North Carolina.

How to reach COLONIE HILL: 1717 MOTOR PARKWAY, HAUPPAUGE, L.I., 11787 (516) 234-7800

FROM BROOKLYN
Belt Parkway to Cross Island Parkway to Long Island Expressway eastbound — then

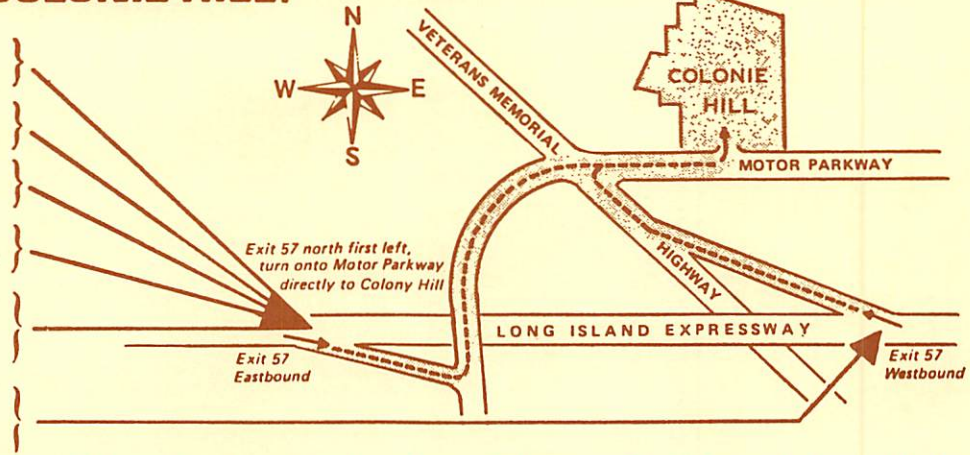
FROM MANHATTAN & QUEENS
L. I. Expressway — eastbound — then

FROM THE BRONX
Throgs Neck Bridge to Long Island Expressway — eastbound — then

FROM NASSAU AND WESTERN SUFFOLK COUNTIES
L. I. Expressway — eastbound — then

FROM NEW JERSEY
George Washington Bridge to Cross Bronx Expressway to Throgs Neck Bridge to Long Island Expressway eastbound — then

FROM EASTERN SUFFOLK COUNTY
L. I. Expressway, Exit 57, right on Veterans Highway to Motor Parkway, right directly to Colonie Hill.



ALTERNATE ROUTES: Grand Central Parkway, Northern State Parkway to Exit 37A on to Long Island Expressway, East to Exit 57 — OR; Southern State Parkway to Sagtikos State Parkway, North to Long Island Expressway, East to Exit 57.

COMMITTEES

(Continued from Page 2)

EDUCATION COMMITTEE — Chairman, MELVIN FEBESH, Urban Foundation Co., Inc.; Vice Chairman, EDMUND M. BURKE, Mueser, Rutledge, Johnston & DeSimone; JOSEPH J. DIEHL, The Mergentime Corp.; JOHN G. DONARGO, TMC Foundations Inc.; A. J. ELY, MacLean-Grove Company, Inc.; ROBERT C. FRIBERG, Andrew Catapano Co., Inc.; JEROME P. HILL, S.J. Groves & Sons Co.; ROBERT J. HILL, Parsons, Brinckerhoff, Quade & Douglas; RUDI vanLEEuwEN, Slattery Associates, Inc.

PUBLICITY COMMITTEE — Chairman, GERARD J. CARTY, Walsh Construction Co.; Vice Chairman, STUART H. BARTHOLOMEW, S. H. Bartholomew, Inc.; STANLEY M. ARONIN, Certified Concrete Co.; EDWIN L. JONES, JR., J. A. Jones Construction Company; FRED A. REIF, Perini Corp.; GEORGE J. TAMARO, JR., Mueser, Rutledge, Johnston & DeSimone; HERBERT WASSERMAN, Slattery Associates, Inc.; GEORGE ZIEGLER, NYC Transit Authority.

STEVE GREENFIELD, Chairman of the Board of Parsons Brinckerhoff, Inc., heads the Award Committee as it's Chairman assisted by IRVING R. HUIE, Senior Vice President of Perini's Heavy Construction Group as Vice Chairman. JAMES L. MANN, S. J. Groves & Sons Co., and FRANK M. WARREN, Jr., J. A. Jones Construction Co., have been appointed as Members-at-Large. In addition, the Award Committee consists of the Officers, Trustees, Standing Committee Members, Past Presidents and Recipients of the Member Award.

Education Committee Activities

STUDENTS' DAY

On Friday, April 22nd, two hundred fifty student engineers were given an opportunity to see construction in progress on the World Financial Center at Battery Park City.

The students gathered at 8 a.m. on the mezzanine of the north tower, 1 World Trade Center where they were treated to coffee and pastries. This was more than welcome for many of them since they had been "on the road" traveling from their respective University towns since the "wee hours". Hard hats and literature was distributed and releases signed. President of The Moles, Norman Nadel, welcomed the student engineers and there were brief talks explaining the construction they were about to see by: John Norris, Vice President for Construction with Olympia & York, Battery Park City; and Bob Johnston and George Tamaro from Mueser, Rutledge, Johnston & DeSimone the foundation engineers on the project. Mel Febesh and the other members of the Education Committee rounded the students up into groups and on to the construction site. After a complete tour of the site, box lunches were distributed. Along with the members of the Education Committee, other Mole Members and associates serving as guides for the day were: Don Miner, Mergentime Corp.; Tony Mazzo, Urban Foundation; Gene Casey and John O'Keefe, Mason & Hanger-Silas Mason Co.; John Chow and Bob Koch, J. Rich Steers, Inc.;

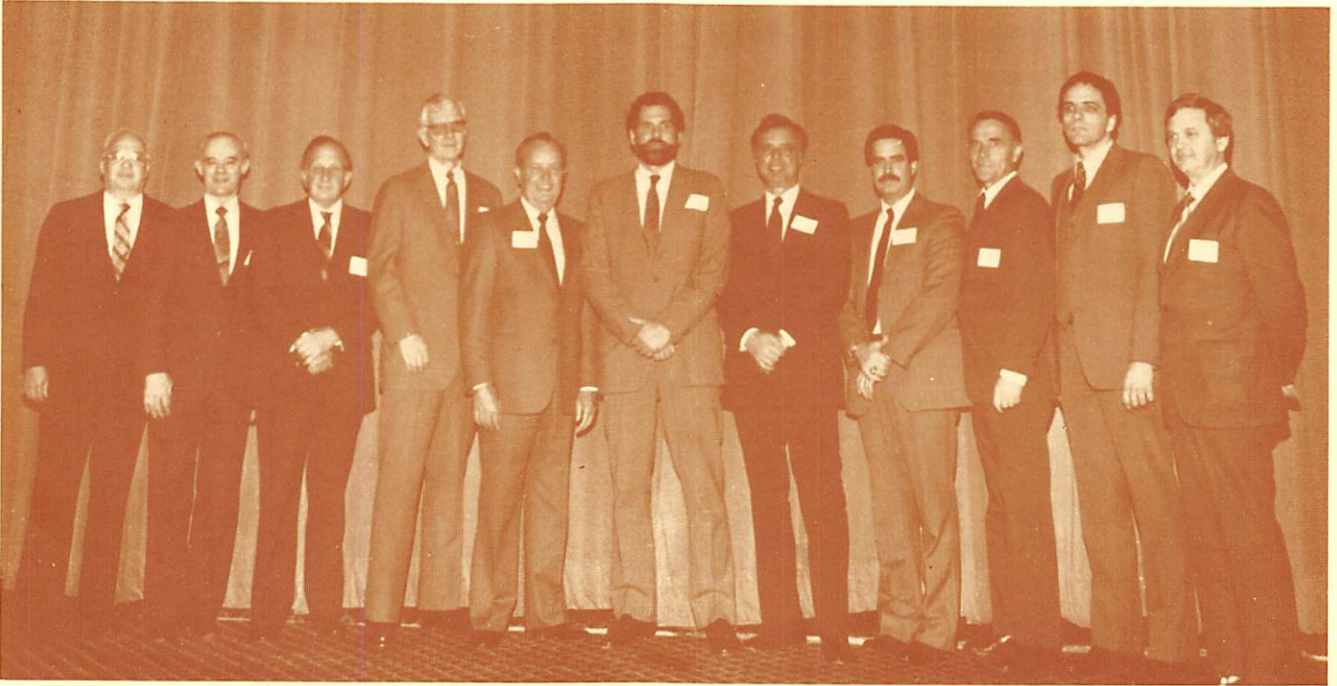
STUDENT AWARDS

As a part of the Education Committee's endeavor to interest student engineers in the construction industry, each year, The Moles present a Student Award to each of the twenty schools, currently on The Moles' approved list who indicate a desire to participate.

The Award (a certificate and One Hundred Dollars) is presented to a student in engineering whose academic achievement and enthusiastic application shows outstanding promise of personal development leading to a career in construction engineering and management.

As this issue of Holing Through goes to press the following students have been presented with the 1983 Student Award: Brian Abt, Rensselaer Polytechnic Institute; Leslie B. Newton, SUNY at Delhi; Robert M. Nawy, Rutgers University; Edward Yen-Pang Yin, The Cooper Union; Peter Healy, Columbia University; John Donohoe, SUNY at Farmingdale; Robert H. Helstoski, Fairleigh Dickinson University; Paul Pawlowski, Union College; Bryan D. Clark, Mark A. Ehlen, Richard E. Crum and Douglas E. Neal shared the Award at Cornell and Elizabeth A. Jones, Princeton University.

Al Ward, Walsh Construction Co.; and Tony Albicocco, Slattery Associates. The Education Committee Members who worked diligently in co-ordinating the entire day are listed on this page. Photos of the day, taken by Herman Bernstein are reproduced on page 8.



left to right: Eli Lemcoe, Donald G. Iselin, Bates C. Burnell, Arthur R. Trautmann, Homer L. Riley, Eugene F. Kelley, Joseph M. Martosella, Lawrence R. Eckert, Warren H. Anderson, John L. Kolaya, Donald E. Orr.

NEW MEMBERS

WILLIAM L. ACKER, III is President of Acker Drill Co., Inc. The company manufactures drills and drilling accessories for heavy construction foundation design; and is one of the leaders of innovativeness and progress in machinery and systems in the industry. Will Acker has made substantial contributions to the field of subsurface investigation. He is the author of the book "Basic Procedures for Soil Sampling and Core Drilling" published in 1974. His father, Bill Acker was a member of The Moles until his untimely death in 1979. Will studied Geotechnical Engineering at Cornell University and has a Bachelor of Science degree in Geology from the University of Vermont which he earned in 1968.

WARREN H. ANDERSON is a partner in the consulting engineering firm of Mueser, Rutledge, Johnston & DeSimone. Prior to joining MRJ&D in 1979, Warren spent several years as Executive Assistant to the Senior Executive Officer, New York City Transit Authority where he organized the Capital Projects Planning Group for development of the construction program of that Agency. He served 23 years in the United States Navy (CEC) retiring with the rank of Captain in 1976. Since 1979 and his affiliation with MRJ&D he has had responsibility for their part as General Soil Engineer for the subsurface investigation, development of

geotechnical and foundation criteria and design of landfill embankments for the West Side Highway Project. Warren has a Bachelor of Civil Engineering degree from the University of Minnesota and a Master's from Stanford University.

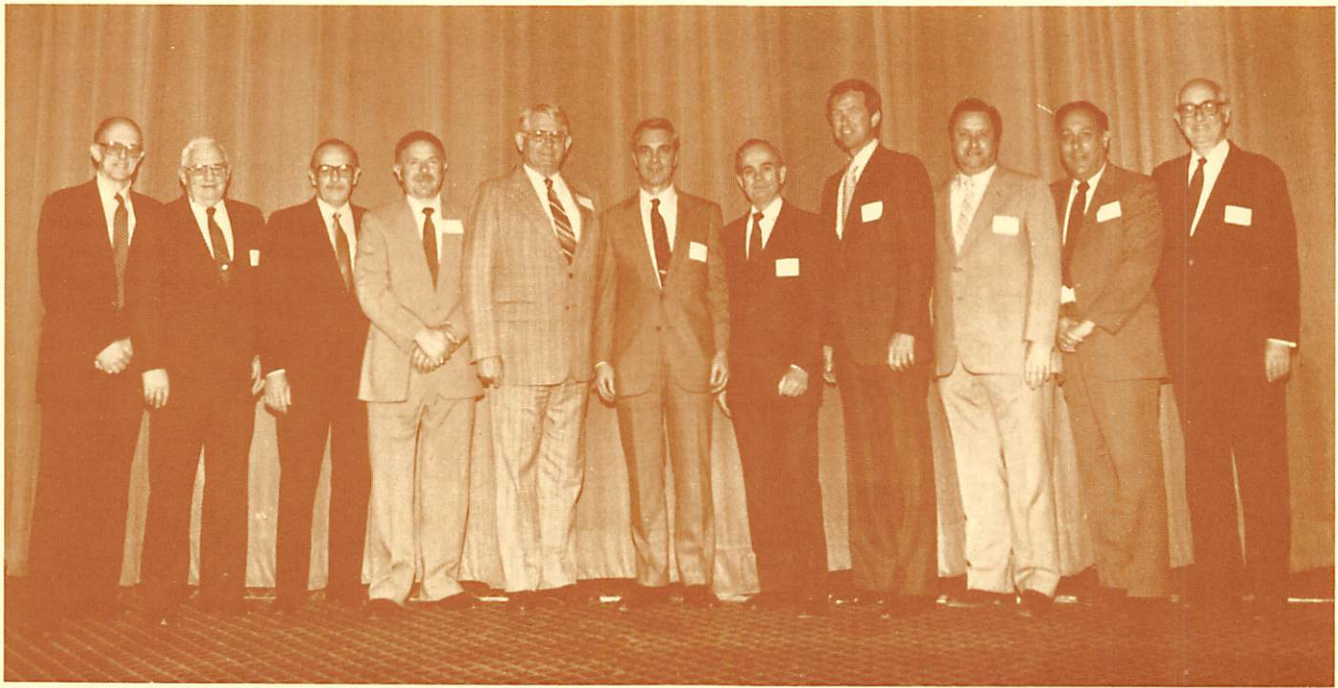
BATES C. BURNELL is Vice President of Morrison-Knudsen's Management Services Division, Heavy & Marine Group, headquartered in Boise, Idaho. Prior to his service with M-K he had a distinguished Military career, retiring after 34 years in the United States Army (COE) as Deputy Chief of Engineers with the rank of Major General. As Director of Military Construction for the Office of the Chief of Engineers he managed all military construction programs performed by the Corps with an annual 2.5 billion dollar value. A 1945 graduate from the United States Military Academy at West Point, he earned his Masters in Civil Engineering at the Massachusetts Institute of Technology.

R. NELSON CREWS is President and Director of Raymond International Inc. He joined that firm in 1975 after over twenty-five years with McDermott Inc., working through the ranks to the position of Executive Vice President and Director. Nelson is recognized worldwide as a leader in the field of marine and offshore construction. He is a graduate of Tulane University having earned a Bachelor of Civil Engineering degree in 1948.

VITTORIO B. Di GIORGIO is Vice President and General Superintendent in charge of field operations for Urban Foundation Co., Inc. Ben has over twenty-five years construction experience and a number of years supervising deep, difficult foundations. Prior to his affiliation with Urban some five years ago, he was employed by Ingram & Greene for over twenty years.

LAWRENCE R. ECKERT is Chief Engineer of Commercial Shearing's Underground Support Division. The firm manufactures tunnel supports for the construction and mining industries. In his capacity as Chief Engineer, Larry is responsible for designing and furnishing supports both temporary and permanent for heavy underground construction. He has a Bachelor of Engineering degree from Youngstown State University.

LEONARD EPSTEIN is Vice President of Grow Tunneling Corp.; Project Manager for the past eight years on New York City's Water Tunnel #3. In the twenty years he has been affiliated with Grow he has come up through the ranks to his current position having experience in all phases of underground and heavy construction. He holds a Bachelor of Civil Engineering degree from CCNY and earned his Master's from NYU.



left to right: Charles Worischek, Frank L. Flood, Jr., Henry J. VanderNoot, Vittorio B. DiGiorgio, Warren H. Pettingell, James L. Lammie, Robert F. Jortberg, G. W. Gilfillan, Leonard A. Epstein, Leonard Fleishman, R. Nelson Crews.

LEONARD FLEISHMAN is Vice President and General Superintendent for Underpinning and Foundation Constructors, Inc. Len has over thirty years of experience in heavy construction having served I. B. Miller Contracting; Horn Construction and now Underpinning and Foundation. He has been in responsible charge of offshore water works; intricate and sophisticated dock building and pile driving work; underpinning and marine structures. He earned his B.S. degree in 1951 from Utah State University.

FRANK L. FLOOD, JR., is Chief Engineer for Perini Corporation's Heavy Group. He has been actively engaged in construction since earning his Civil Engineering degree in 1952 from Worcester Polytechnic Institute. Frank was employed by Dravo Corporation after graduation and worked in varying assignments in their heavy construction division until 1981 when he joined Perini.

G. W. GILFILLAN is Group Vice President of Morrison-Knudsen's Heavy & Marine Group. On July 1st he succeeds J. A. Lilly as Executive Vice President of that division. Bill has been with M-K since graduating in 1960 from Sacramento State College with a Civil Engineering degree. Rising through the ranks, he has an outstanding record of accomplishments extending from field supervision, job management and corporate responsibilities.

DONALD G. ISELIN is Group Vice President of Raymond Kaiser Engineers, Inc. In this capacity he is responsible for the management of their engineering, construction, procurement, and quality control on all projects, including design and construction of steel mills, aluminum smelters, alumina concentrators, cement plants, power plants, subway and rapid transit systems. Prior to his joining Raymond Kaiser Engineers two years ago, he had an outstanding Naval Career, retiring as Chief of Civil Engineers and Commander of the U.S. Navy Facilities Engineering Command with the rank of Rear Admiral. Graduating from the United States Naval Academy with a Bachelor of Science degree in 1945 he received his Master's degree in Civil Engineering from Rensselaer Polytechnic Institute in 1948. Admiral Iselin has occupied a seat on The Moles' dais, as an Honor Guest, at the Award Dinner in years past as Commander of the Naval Facilities Engineering Command and is well known throughout the country to Mole members and others in the construction industry.

ROBERT F. JORTBERG is Vice President-Construction for The Lummus Company. He is a 1947 graduate of the United States Naval Academy; and after a distinguished career in the U.S. Navy Civil Engineering Corps he retired with the rank of Rear Admiral. In his current

position with Lummus he is responsible for the general planning for all construction activities; development of company standards and methods; and supervises planning and execution of specific projects worldwide.

EUGENE F. KELLEY is Assistant Vice President-Engineering for J. Rich Steers, Inc., and since joining the firm in 1972 has developed rapidly to his present position. After graduating Cum Laude from Kansas State University in 1970 he served with the United States Army Corps of Engineers in the Pacific Ocean Division. For Steers he is responsible for a wide range of marine and heavy construction projects.

JOHN L. KOLAYA is General Manager for Thomas Crimmins Contracting Company in charge of all field supervision, engineering and contract management of company projects primarily in the field of foundation construction. He holds a B.S. in Civil Engineering from Bucknell University which he earned in 1970 and an M.S. from Rutgers University he earned in 1976.

JAMES L. LAMMIE is President of Parsons Brinckerhoff Quade & Douglas, Inc. Jim has been actively engaged in construction since his graduation from the United States Military Academy at West Point in 1953 where he earned his B.S. in Engineering. He also holds a Masters from Purdue Uni-

(Continued on Page 6)

NEW MEMBERS

(Continued from Page 5)

versity and an MBA from George Washington University. Prior to his current position he was Project Director, General Consultant for the design and construction of the MARTA system in Atlanta, Georgia; and also served as District Engineer for the Corps of Engineers in San Francisco, California.

ELI LEMCOE is Vice President and Manager of the New York City Office for Sverdrup & Parcel and Associates, Inc. He has been affiliated with this firm for 35 years. Some of the recent projects he has been involved with have been the Fort McHenry Tunnel in Baltimore; the L'Enfante Plaza Station and the Metro Station of the Washington Metro System; numerous heavy structures including vehicular, railroad, and subway tunnels. He is a 1948 graduate of the Washington University where he earned his Bachelor of Science degree in Civil Engineering.

JOSEPH M. MARTOSELLA is Vice President for Buckley & Company, Inc. He has been active in the heavy construction industry in excess of thirty years and has served the industry through the AGC, MACMA and other industry related organizations over the years. He holds a B.S. degree which he earned in 1953 from LaSalle College and an LLB which he earned in 1965 from Temple University School of Law.

PAUL E. McNULTY is a Principal in the law firm of King & King, Chartered, headquartered in Washington, D.C. The firm has specialized in construction contract law since its founding over one hundred years ago.

DONALD E. ORR is Vice President and General Counsel for the Walsh Construction Company. He has been with Walsh for over 10 years and prior to joining them he was employed by Pittsburgh Des Moines Steel Company. He holds a Bachelor of Arts degree from Westminster College and earned his JD in 1959 from the University of Pittsburgh Law School.

RICHARD M. PEARL is Senior Vice President of Brown & Root, Inc.'s Heavy Civil and Mining Construction Division, headquartered in Houston, Texas. His experience in heavy construction is worldwide; and envelopes most types of construction including dams, highways, bridges, powerhouses, townsites,

mine development and processing facilities. Dick earned his B.S. degree in Civil Engineering in 1950 from the University of California at Berkeley.

WARREN H. PETTINGELL is Vice President of Perini Corporation's International Operations. He has been employed by the firm for over thirty years in positions of increasing importance. His most recent field experience was as Project Manager on the Ovda Air Base in the Negev Desert in Israel; and the Fahaheel Hospital in Kuwait. Other projects which he has had responsibility for here in the United States include the Uniontown Lock on the Ohio River; and the Everett Hopkinton Dam in New Hampshire. He is an engineering graduate of Harvard University; a member of the U.S. Committee on Large Dams and a lecturer for the ASCE's continuing Education Program.

HOMER L. RILEY is President of Nello L. Teer Company headquartered in Durham, North Carolina. He has been affiliated with the firm since his graduation in 1949 from the North Carolina State University where he earned his Civil Engineering degree. His experience covers all phases of construction from highways, airports, flood control, dams, hydroelectric facilities, railroads and rapid transit facilities both in the United States and overseas.

MICHAEL S. TORRE, Partner in the law firm of Tunstead, Schechter & Torre specializes in matters relating to construction, engineering and architecture. His background is unique in that he has both engineering education and experience which proves to be a vital element in the practice of his profession as a lawyer. He is a 1965 Civil Engineering graduate from City College of the City of New York, School of Engineering and holds a JD from St. John's University, School of Law which he earned in 1972. He holds Professional Engineer licenses in the states of New York and New Jersey. Mike, before entering law school, was employed by the firm of Howard, Needles, Tammen & Bergendoff, consulting engineers and was primarily engaged in the design of highway separation crossings, including substructure and superstructure design; working on projects in the Metropolitan area, namely, Northern State Parkway, Bruckner Expressway and the New Jersey Turnpike. He also worked for the Port Authority of New York and New Jersey, administering construction projects at the three metropolitan airports.

ARTHUR R. TRAUTMANN, formerly Executive Director of the Associated General Contractors of New Jersey is currently Administrator for the Heavy and Highway Laborers Health & Welfare Fund, headquartered in Philadelphia. Art served the AGC of New Jersey for twenty years, most of them as Executive Director. He has been involved with construction contractors in the performance of his duties as Administrator of that Association as well as negotiations with labor representatives and various agencies which those contractors perform work for. He managed all functions for the Association as well.

THOMAS W. TRAYLOR is President of Traylor Bros., Inc., having recently taken over the leadership of the firm from his Mole member dad, Bill Traylor. The firm has enjoyed a fine reputation for many years in the construction of major subway and sewer tunnels; marine work, including dams and bridge substructures along with other heavy construction projects. He holds a Bachelor of Science degree in Civil Engineering from Massachusetts Institute of Technology which he earned in 1961 with a Masters from Stanford University which he earned in 1963.

HENRY J. F. VANDERNOOT is Chairman and Chief Executive Officer for Franki Canada Limited headquartered in Mount Royal, Quebec. Primarily foundation contractors, the firm does extensive work in Canada and the Caribbean including piling, caissons, underpinning, shoring, soil improvement, slurry walls, etc. He also serves as Vice President, Franki International; Vice Chairman, Franki Foundation Company; and Chairman, Franki Trinidad Limited. He has a Civil Engineering degree from the University of Ghent, Belgium which he earned in 1946.

CHARLES A. WORISCHECK is Chief Engineer of The Conduit and Foundation Corporation. He is headquartered in Elmwood Park, New Jersey. Charles has been actively engaged in construction since his graduation from Rutgers University in 1950 where he earned a Civil Engineering degree. His experience covers all phases of heavy construction including: roads, bridges, tunnels, dams, sewerage treatment plants, power plants, and foundations.

**FISHER NAMED TO
SENIOR POST AT
RAYMOND**

JOHN R. FISHER has been elected Executive Vice President Raymond International Builders, Inc., a wholly-owned subsidiary of Raymond International Inc., worldwide engineering and construction firm headquartered in Houston, Texas.

A retired United States Navy Rear Admiral, he joined Raymond Builders in 1977 as Vice President and General Manager for the subsidiary's southern region. Since 1981 he has been a Senior Vice President of Raymond Builders.

Admiral Fisher is a graduate of the United States Naval Academy and holds a master's degree in civil engineering from Rensselaer Polytechnic Institute. He is a member of the American Society of Civil Engineers, the Society of American Military Engineers and the Beavers. He has been a member of The Moles since 1979.



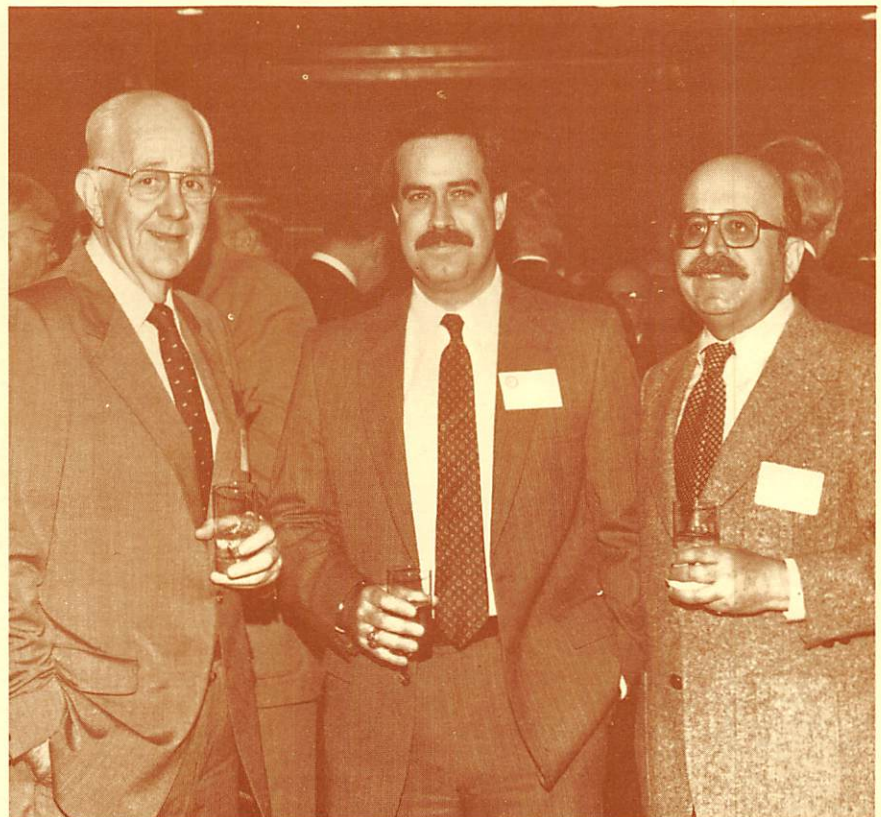
Life Members elected to membership in 1943 present at the May 4, 1983 annual business meeting to receive their certificates are left to right: JOHN J. DiMENNA, JOHN J. MURPHY, FRANK P. DiMENNA and CHARLES B. deLEON.

**FOX NAMED
PRESIDENT OF
NEW YORK
BUILDING CONGRESS**

GEORGE A. FOX, President of Grow Tunneling Corporation was elected as President of the New York Building Congress on May 16th at the annual meeting held at the Waldorf Astoria Hotel.

George has been a member of The Moles since 1959 and has served as a Committee Member and Trustee. In 1979 he was accorded The Moles' highest honor when he was recipient of the Member Award for "outstanding achievement in construction."

• JACK K. LEMLEY has been elevated to the post of Group Vice President, M-K's Heavy and Marine Group.



Long time members, GENE CASEY (left) and MEL FEBESH (right) welcome brand new member, LARRY ECKERT (center) at May 4 business meeting and dinner.

Students' Day 1983 . . .

