

NEWS BULLETIN  
AN ASSOCIATION OF MEN



OF THE MOLES  
ENGAGED IN HEAVY CONSTRUCTION

**HOLING**

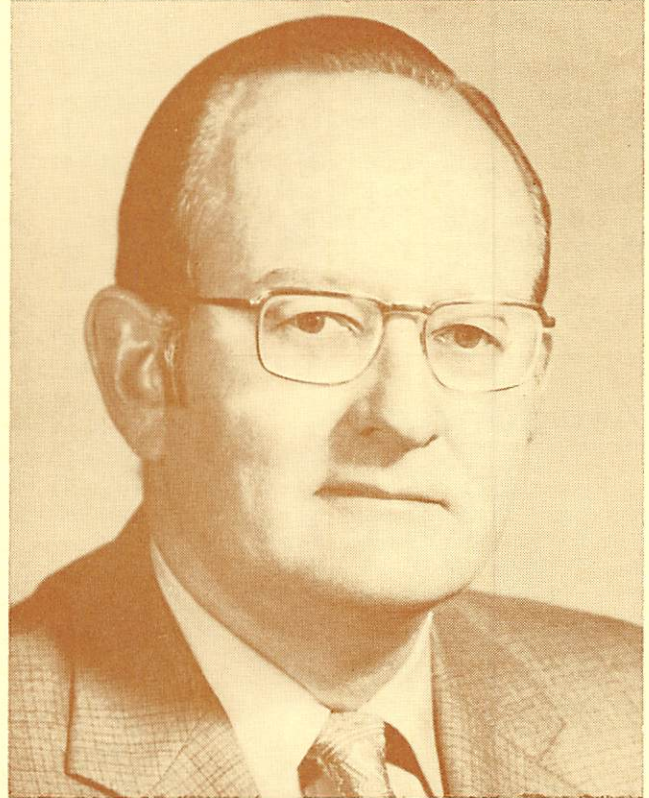
**THROUGH**

NOVEMBER, 1982

## 1983 Awards to DEERE and SAUNDERS



DON U. DEERE



JOHN D. SAUNDERS

**N**ON-MEMBER, Don U. Deere and John D. Saunders, Member, have been selected to receive The Moles' Awards for "outstanding achievement in construction". They will be presented with the traditional bronze plaques and hand engraved and illuminated citations at the 43rd annual Award Dinner to be held at The New York Hilton on Wednesday evening, January 26, 1983.

**D**ON U. DEERE is an eminent Consultant in Engineering Geology and Applied Rock Mechanics headquartered in Gainesville, Florida.

Born in Corning, Iowa, March 17, 1922, he earned a B.S. in Mining Engineering from Iowa State College in 1943. In 1949 he received a Masters degree in Geology from Colorado University and in 1955 he received his Ph.D., Civil Engineering from the University of Illinois.

(Continued on Page 2)

**J**OHN D. SAUNDERS is President of Slattery Associates, Inc., of Maspeth, New York and a Vice President of Alpha Portland Industries, the parent company.

Born in Flushing, New York, April 4, 1926, John was raised in Great Neck and graduated from Cornell University earning a Bachelor of Civil Engineering degree in 1948.

Immediately after graduation, John joined the Slattery Contracting Company. During the ensuing

(Continued on Page 2)



## Don U. Deere

(Continued from Page 1)

Dr. Deere is recognized as one of the leading engineering geologists in the United States. He has done consulting work on design and construction problems for various U.S. and foreign governmental agencies as well as for private industry. His assignments, too numerous to list in detail, include: Churchill Falls, Labrador; Kariba, Rhodesia; Yards Creek Pumped Storage, N.J. Power & Light; NORAD underground communication center, cavern layout; World Trade Center, N.Y.; Hartsville, TVA, Nuclear Power Plant and various Open Pit Mine slope studies, special tunnel studies, and landslide and slope stability studies. Dr. Deere has been on the Board of Consultants for numerous major hydroelectric projects; subway tunnels; and underground mining and storage projects.

He has written over fifty papers on engineering geology, applied rock mechanics, dam foundations, and tunnels.

His academic honors include: Tau Beta Pi, Sigma Xi, and Phi Kappa Phi. He was elected to the National Academy of Engineering in 1966 and in 1971 to the National Academy of Science.

---

## Award Presenters

George A. Fox has been selected by the Award Working Committee to present the 1983 Non Member Award to Don U. Deere. George is President of Grow Tunneling Corp. Irving R. Huie, Senior Vice President of Perini Corporation's Heavy Construction Group has been selected to present the Member Award to John D. Saunders. John and Irv were childhood friends.

---

## MAYO honored by ASCE

At the recent convention of the American Society of Civil Engineers, held in New Orleans, BOB MAYO was presented with the 1982 Civil Engineering History and Heritage Award. Bob was cited for: *"a long and distinguished career as a practicing civil engineer who has devoted much of his professional career to civil engineering history and to the documentation and diffusion of knowledge on the history of American tunnels and canals"*.

## John D. Saunders

(Continued from Page 1)

years he supervised contracts on arterial highways including the Major Deegan, Cross Bronx, Long Island, Clearview and Gowanus Expressways. He also supervised construction on the Midtown Sixth Avenue Subway Extension, Brooklyn Bridge, Manhattan Plaza and numerous building foundation contracts.

In 1969, John became Executive Vice President of Slattery Associates, Inc., the successor company to Slattery Contracting Co., Inc. He was made President in 1974.

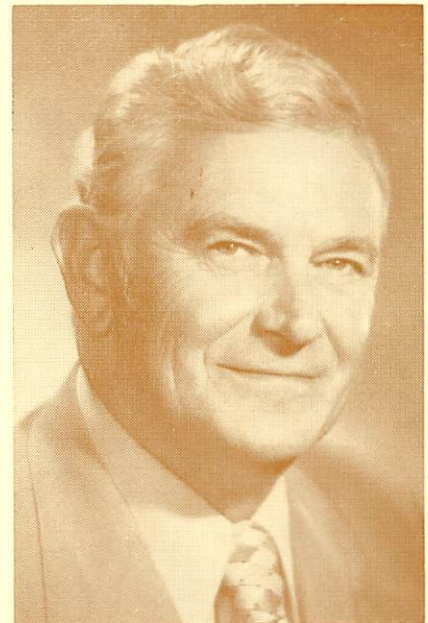
Under his leadership, the Slattery Organization has grown considerably in the last decade through geographical dispersion and the acquisition of the following subsidiaries: Grow Tunneling Corp., H. Sand & Co., Inc., and Underpinning & Foundation Constructors, Inc. The firm's operations include heavy construction projects in New York City, Washington, D.C., Virginia, Atlanta, Boston, Buffalo, Philadelphia and the West Coast.

He is a Past President of the General Contractors Association of New York; and serves on their Executive Committee. He is active as a member of the Labor Relations Committee and as such is involved in the labor problems within the construction industry. He is a member of the Beavers, the Society of American Military Engineers; and serves on the Board of the Building Congress. He also serves on the committee to build Westway.

John is a member of the Cornell Society of Engineers. He was Cornell Class President in 1947 and was elected to the National Honorary Engineering Societies, Chi Epsilon and Tau Beta Pi. This past June, John was honored by the heavy construction division of the United Jewish Appeal Federation of Jewish Philanthropies. For The Moles, he served as Committee Member, Vice Chairman and Chairman of the Award Committee 1979/1980, Second Vice President 1981 and currently serves as First Vice-President.

A resident of Plandome, New York, John and his wife Barbara have two children: a son David and a daughter Leslie.

## Award Chairman



The Chairman of The Moles' Award Committee this year is James A. Lilly, a Director and Executive Vice President, North American Operations, Morrison-Knudsen Company, Inc. Jim is responsible for all heavy construction operations in the United States including the Company's Heavy and Marine Group, Power Group, Building Group and International Engineering Company, Inc., (a wholly owned subsidiary).

Jim, a 1940 graduate of Virginia Polytechnic Institute earned a Bachelor of Science degree in Mechanical Engineering; and immediately joined Ingersoll Rand as an engineer.

During the period from 1942/45 he served as a Pilot in the United States Marine Corps. In 1945 after discharge from the Marine Corps, he joined the George M. Brewster & Son Company in Bogota, New Jersey where he served as an engineer and general superintendent until 1949. The next ten years he worked for W.S. Bellow Construction; McKenzie Construction and the Whittle Construction Company.

In 1959, Jim joined M-K as an engineer on the Navajo Dam Project at Farmington, New Mexico and from there progressed rapidly to positions of Project Engineer, Assistant Project Manager, Project Manager, General Manager of the \$1.9 billion MK-BRJ military construction program in Vietnam, District Manager of M-K's San Francisco International District and Division Manager of International Operations. In September of 1973, Jim was elected a Director of the firm and was appointed

(Continued on Page 4)





## 25-YEAR MEMBERS



Nine members, elected in 1957 will be presented with twenty-five year certificates this November. Their names appear below with a brief description of their life as a "Mole".

**CLARK H. BATCHELDER** — "Batch" was affiliated with several prominent contracting and engineering firms during his long career in construction. Most of the time, however, was spent with Walsh Construction and Batch recalls when Tom Walsh, Jr., proposed him for membership. ("how I miss that wonderful guy" Batch said recently). He served on the Publicity Committee and also served as Sergeant-at-Arms during 1972, and he recalls that was an "exhausting job". Batch just turned 74 and he says he is still counting. He is working presently as a consultant on political risk insurance for contractors and still going strong. He tells us that "a consultant is what one can become upon retiring and after those who knew you are gone, or have forgotten you weren't really all that smart". One thing's for sure, he still maintains his wonderful sense of humor.

**GUY J. COFFEY** — Guy was President of Chicago Pneumatic Tool Company at the time he became a Mole. His early days were spent in construction. After he went into "sales" with Chicago Pneumatic he performed a service to the contractors through his company in the development of equipment used on the construction of tunnels, dams, irrigations and highway projects as well as foundations for many of NYC's large buildings. After his retirement, in 1964, he moved to the West Coast and became a Member Emeritus.

**ROBERT S. GATES** — Bob currently serves as Chairman of the Board and Chief Executive Officer of Gates Construction Corp., in Little Ferry, New Jersey. The firm is listed in EN-R's 1982 "Top 400 Contractors" and are prominent in the field of marine and other sub-aqueous construction. Bob is a graduate of the U.S. Merchant Marine Academy in Kings Point, N.Y.; and received the highest Alumni Award obtainable for outstanding business achievement from the U.S. Merchant Marine Academy. He is a member of the Admiral's Committee, U.S.M.A. Over the years as a Mole Bob has served on many committees and was a Trustee during 1973-75. Currently he is a Member-at-Large of the Award Committee.

**GILBERT A. GRIFFIN** — Gil was a Vice President and Division Manager for Morrison-Knudsen Company when he became a member of The Moles in 1957. Now retired and a Member Emeritus, Gil's fifty years as a "construction stiff" would fill a good size book with thrills, chills, and proud moments. Thirty-eight of those years was spent with M-K. His early career began in the days of horse drawn fresnoes and scrapers, standard steam shovels with their boom cats, pit crews, steam dinkies and western dump cars all of which was railroad construction. Then on to dam building, tunnel driving, underground powerhouses and whatever else needed to be done. Unbelievable but Gil says, he is now content to sit at home and enjoy the company of his wife, four children and nineteen grandchildren.

**EMMET J. OAK** — Emmet currently serves as Estimator, Engineer and Contract Manager for The Conduit & Foundation Corporation headquartered in Philadelphia. He has been engaged in heavy construction since he graduated from CCONY in 1936 with an Engineering degree. He has worked for Thomas Nicol Co., of Farmingdale, N.J., and the S.J. Groves Company on various highways. During the early days of his career (1936-51) he was affiliated with Cleverock, Inc., where he worked on Bridges on the Cross County Parkway and various construction throughout the Metropolitan area. Emmet has done considerable traveling during his career which included the Caribbean, South America, Europe and Africa. He is a Professional Engineer in New York and New Jersey. His health permits him to do a full day's work, however, he says, "it has curtailed his golf game and travel."

**JAMES PINNELL** — Jim was a Vice President with the Raymond Concrete Pile Company when he became a member of The Moles. He began his career on tunnels in London, England, working for his father in 1904. He joined Raymond in 1918 and worked on major underground projects for that company. He became a Member Emeritus in 1966.

**JOSEPH F. WATKINS** — Joe was affiliated with the George W. Rogers Construction Company when he became a Mole member twenty-five years ago. Later he worked on various marine projects in waterways around the world for Raymond International and the Dillingham Corporation. Joe has been retired the last four years and spent some time sailing with his son on his Southern Cross 31 around the Florida Keys and Chesapeake Bay areas; and also spends time with his other son and two grandchildren in New Jersey. Joe plans to be in his new home, January 1983, which will be on the 13th fairway at Carolina Shores in Calabash, North Carolina.

**JOHN H. WEIDMAN, JR.** — John immediately began his career in construction upon graduation from Cornell University in 1937. The first four years was spent with a general contractor in upstate New York until he joined Walsh Construction Company. Except for four years service in the Seabees during World War II, John spent the rest of his working years with Walsh as supervisor and administrator on many major projects. He was elevated to the Presidency of that company in 1972 and remained in that position until 1975. The next three years he served as an executive consultant to the firm. He retired in 1978. Since his retirement he lives on a golf course and plays almost daily for about eight months of the year. He spends most of the winter in Florida or California where, John says, "the grandchildren are a bigger attraction than the warm weather".

**DAVID A. WERBLIN** — Dave was a civil engineer on the staff of Griffin Wellpoint Corporation when he became a member of The Moles. Upon graduation from Massachusetts Institute of Technology, he joined the consulting engineering firm of then Parsons, Klapp, Brinckerhoff and Douglas as a civil engineer in connection with the design and construction of airbases throughout the Caribbean area. During World War II he served as a Lieutenant Colonel in the U.S. Army Corps of Engineers; and in 1948 joined the Griffin Wellpoint Corporation. He is now Senior Vice President of the successor company, Griffin Dewatering Corporation. During his career he has been involved in the engi-

(Continued on Page 4)



## Student Awards

In addition to those recipients published in the July issue of *Holing Through*, nine others either have already received The Moles' 1982 Student Award or will be presented with it before the end of The Moles' calendar year. Among those nine are: Daniel E. Dowell, New Jersey Institute of Technology — Barbara Haines, SUNY at Delhi, New York — James R. Laurita, Lafayette College — Marie Galitsis, Hofstra University — Kenneth D. Jones, University of Connecticut — Susan J. Wyler, Cornell — David L. Stiger, Bucknell University — Joseph A. Sorensen, Stevens Institute of Technology and Richard Stringfellow, Princeton. — Our thanks to Mole member DAN S. BROCK for representing The Moles and presenting the Award to Ken Jones at the University of Connecticut. A total of sixteen Awards have been approved at this writing.

## 25 YEAR MEMBERS

(Continued from Page 3)

neering, design and field supervision of many notable dewatering projects. On one of those projects he collaborated with Mole member James D. Parsons of Mueser, Rutledge, Johnston & DeSimone on the design and execution of the first large-scale dewatering and recharging system in the United States. Dave has presented lectures and has authored articles and papers on various aspects of ground water control. Dave served The Moles as Trustee and Chairman of the Publicity Committee during the period from 1962-64.

## Award Chairman

(Continued from Page 2)

Executive Vice President in December of that year.

Jim's construction career spans a 42 year period during which time his major project experience has been: the Military Construction Program in South Vietnam; Grand Forks Missile Facilities, Grand Forks, North Dakota; Warren Minuteman Facilities, Cheyenne, Wyoming; Minuteman Missile Installation, Sedalia, Missouri; Altus Missile Facilities, Altus, Oklahoma; Lowry Titan I - ICBM, Denver, Colorado and the Navajo Dam.

Since becoming a member of The Moles in 1974, Jim has served as a committee member, Trustee for three years, Vice Chairman and Chairman of the Award Committee.

## A MOMENT OF SILENCE

VERNON N. HOLDERMAN died on July 20, 1982.

Before his retirement, Mr. Holderman was President and General Manager of V.N. Holderman & Sons Inc., and V.N. Holderman Paving, Inc., engaged in heavy highway construction as well as airports, tunnels and dams; and headquartered in Columbus, Ohio.

He was active in the Associated General Contractors of America and the Ohio Contractors Association and spent a great deal of time and effort in the interest of improvement in the construction industry.



## MOLES . . . . here and there

• Congratulations to Mole members, AL MAEVIS and BOB RUBIN who with Sam Guy and Virginia Fairweather are celebrating their new book "Construction Claims" just published by Van Nostrand Reinhold. The four authors are involved in various aspects of construction. Robert Rubin has devoted his legal practice to construction issues since 1964; Al Maevis has had a distinguished career in heavy construction for the past twenty-eight years; Sam Guy has been in construction contracting and Ms. Fairweather is Editor in Chief of two international construction and engineering magazines.

• Our own STEVE GREENFIELD along with his associate, Henry L. Michel made the "cover" of September 30th issue of *Engineering News-Record*. The story entitled "Parsons Brinckerhoff's high stakes players" relates the reorganization and restructuring of Parsons Brinckerhoff Inc., a holding company for the well-known Parsons Brinckerhoff Quade & Douglas, Inc. Steve is a 35 year veteran of PBQ&D and its Chairman.

• S.D. Bechtel, Jr., Chairman of Bechtel Group, Inc., has been elected to the newly created post of Chairman of the prestigious National Academy of Engineering. The office carries a two-year term. As Chairman, Mr. Bechtel will preside over meetings of the council, serve as Chairman of the Academy's Engineering Fund Board of Trustees, serve as Ex-Officio Member of all Standing Committees, and work actively with

DWIGHT W. WINKELMAN died suddenly on August 14, 1982 while vacationing on his boat at Stratford, Conn. He was 80.

Born in Lohrville, Iowa he graduated from high school there; attended Morningside College; and graduated from the University of Iowa. He gained experience as a construction civil engineer moving through various positions in the states of Minnesota, Illinois, Florida, etc. In 1927 he started his own contracting firm performing utility work as well as paving streets. In the 30's his construction operations moved to New York State where they grew and established a nation-wide reputation.

Dwight served as President of the New York State Chapter of AGC and rose to President of the National organization during the year 1948-49. He was also awarded Honorary Membership in the American Society of Civil Engineers, the Society's highest honor.

He is survived by his wife, Frances T.; a son, Peter J. (also a member of The Moles); a sister and eight grandchildren.

the Academy President to represent the Academy and its policies to the engineering community and the public.

• As of November 1, 1982, DONALD CANALE retired as Senior Vice President from Slattery Associates, Inc. Mr. Canale will continue as a consultant to the firm.