

NEWS BULLETIN

AN ASSOCIATION OF MEN



OF THE MOLES

ENGAGED IN HEAVY CONSTRUCTION

**HOLING**

**THROUGH**

ROOM 50 - FLOOR I-M - THE BILTMORE - NEW YORK, N. Y. 10017

JULY, 1969

## 1969 Annual Business Meeting



Retiring President, HOWARD GOULD (left) is presented with a framed illuminated and engrossed Past President citation from The Moles' 1969 President, FRANK H. PEAVEY, at the Annual Business Meeting and Dinner Held on May 7th.

**THE MOLES'** thirty-first annual Business Meeting and Dinner was held on May 7th in the Grand Ballroom of the Biltmore Hotel.

There were two hundred fifteen members present to extend congratulations to the new officers and welcome the new members.

Twenty three of the thirty two new members elected as of May 1st were on hand and were greeted enthusiastically by the older members.

Introduction of new members, reports of committee chairmen and installation of officers were the important items on the agenda for the meeting which took place after a delightful cocktail hour

was held and delicious roast beef dinner was served.

A little past eight o'clock President Howard Gould called the meeting to order.

(Continued on Page 2)

## The Moles' ANNUAL CLAMBAKE

Monday

August 11, 1969

TAMMY BROOK  
COUNTRY CLUB

Cresskill  
New Jersey

Chairman of the Program Committee, Elwood (Woody) Vroome has announced that the committee has held several meetings and intend to bring The Moles and their guests the ultimate in pleasure and entertainment for the annual Clambake this year.

The beautiful Tammy Brook Country Club in Cresskill, New Jersey, with its spacious grounds will once again provide the setting for this all-day funfest.

A beautiful olympic size, 2 level swimming pool is available for the exclusive use of The Moles and their guests that day. This is included in the

(Continued on Page 9)

## ANNUAL MEETING

(Continued from Page 1)

**MOMENT OF SILENCE** — President Gould sadly advised the group of the twenty-two members who had passed away during the period from the last Business Meeting on May 1st and this meeting and requested all present to rise and observe a moment of silence for these departed members. They were: Guy F. Atkinson; George Burrows; Howard Collins; Thomas Crimmins; John W. Fawcett; Henry Goldfinger; George T. Hammond; Alf Hjort, Jr.; George Hollerith; Howard W. Holmes; Eugene E. Hult; Justin E. Hyland; Robert B. Jarvis; Mansell L. MacLean; James Markley; John B. Mathews; Eugene McGovern; Lambert T. O'Neill; Louis I. Pentzien; Joseph R. Perini; Thomas G. Rome; Richard Wiggins.

**NEW MEMBERS** — Mr. Gould introduced the new members and offered some interesting facts about the group — such as — there were more than a dozen states represented in the group and that the average age was 49. (Group photos of those available appear on pages 4 and 5 together with brief sketches of all 32.)

**REPORTS OF OFFICERS AND COMMITTEE CHAIRMEN** — Arnold Thurber, Treasurer of The Moles reported first on the status of the Operating Account. Receipts for the year totalled \$101,604. Disbursements for the year totalled \$96,831.89. However, Mr. Thurber added that an additional amount had been spent for the purchase of necessary, efficient office equipment, etc., which totalled \$6200 and would not be re-occurring. He reported that the cash balance in the Operating Account as of May 1, 1968 was \$7,183.83 and the cash balance as of May 1, 1969 was \$5,868.54. Mr. Thurber advised that the amount of the Permanent Fund as of May 1st was \$51,355.81 which was an increase of approximately \$2200 over the year or a total of the interest earned. He thanked the membership for permitting him to serve The Moles as Treasurer these past three years.

Howard Gould presented Mr. Thurber with a Past Treasurer's Citation which was an indication of a job faithfully and well performed.

Al Korsen, Chairman of the Award Committee, reported that the dinner held on January 29th was another in a long series of very successful Award Dinners. He said that this was due to many factors among which were: the selection of two outstanding recipients, Lowell Dillingham and Henry Boschen and the talks which were lively and

witty and not the least, the support of all those who attended the dinner. He gave special thanks to all the members who served on the Award Committee.

The Membership Committee Chairman, Louis F. Booth, advised that membership as of May 1st was: 476 Active Members, 36 Honorary, 131 Emeritus, and 2 Founder making a total membership of 645.

Mr. Booth in retiring as Chairman thanked the Committee who attended meetings so faithfully and devoted a great deal of their time and efforts to attaining the ultimate results which were seen in the new members elected this year.

In reporting for his last time as Chairman of the Program Committee, A. K. (Burnie) Burnham, Jr., advised that last year's Clambake which was held at Tammy Brook was a huge success with over one thousand Moles and guests attending. He reminded the members that the Clambake this year was scheduled for Monday, August 11th and to be sure and get it down on their calendar. He said "it's a day to remember where there's something for everyone with plenty of real good fun and food".

Frank Vitolo reported that the primary duties of the Publicity Committee were to prepare 3 issues of *Holing Through* for the year and issue press releases for the Award Recipients, Dinner and new Officers. These duties had all been accomplished. Mr. Vitolo reminded all the members that *Holing Through* was a news bulletin for The Moles about The Moles and any members who had any news about their fellow Moles should send it to The Moles' office.

Gardner Bishop reporting for the Education Committee advised that the primary purpose of this committee is: to encourage the youth of our country to participate in heavy construction. The committee attempts to utilize all available means to guide young men toward important positions in the heavy construction industry.

This is accomplished in a small way throughout the year in: arranging for "on campus" speakers from the construction industry; arranging for contacts for individual tours to construction projects by those groups requesting it; the Annual Students' Day; and Summer Employment.

The committee, this past year, had arranged for several speakers, a three-day tour of construction projects, and Students' Day which was held at the World Trade Center site.

The Summer Employment Program which is now in its fourth year has proven to be an effective way to mutually benefit both employer and student. He appealed to the members to study their requirements and, if summer personnel was needed, to notify The Moles' office.

After Gerry Sarno, Chairman of the Committee on Elections, certified that the Committee composed of himself, Jim Armitage and Lou Coakley tallied the ballots and determined the entire slate had been unanimously elected, President Gould introduced the new Officers and Trustees.

Starting with the Trustees, they were: Robert W. Cleveland, President of H. O. Penn Machinery Co.; RADM. Peter Corradi, CEC-U.S.N. (Ret.), Sr. Vice President of Raymond International, Inc.; Elwood P. Vroome, Vice President of I. C. MacElroy Company; and Edward E. White, President of Spencer, White & Prentis, Inc. The foregoing Trustees all elected for a three year term. The Officers, all elected for a one year term were: Edward D. Sabin, Sergeant-at-Arms, Reuben Samuels, Secretary, Louis W. Hall, Treasurer, Alfred H. Korsen, Second Vice-President, John J. Murphy, First Vice-President, and Frank H. Peavey, President.

As he announced Frank Peavey's name, Frank stood at the rostrum and received the gavel from retiring President Howard Gould.

One of the first Official acts as President of The Moles Frank performed was to present the retiring president with a citation and pin signifying his term of Office.

Mr. Gould accepted these with thanks and said "I will always cherish these."

President Peavey addressed the membership for the first time as President.

### THE PRESIDENT'S REMARKS —

*"This is a memorable evening for me. For many years I followed the progress of the organization as it grew in prestige and National prominence to the singular position it holds in our industry today. My only professional interest since I was in High School has been this great industry of ours and so I feel particularly honored to be a Mole and very proud that I have been selected to serve as The Moles' 31st President. I accept this honor humbly and with a firm resolve to carry out my duties as my predecessors have. That is — as a "Good Mole".*

(Continued on Page 8)

# The Moles' Officers, 1969-70

## FRANK H. PEAVEY President

Frank is Vice President of Morrison Knudsen Company Inc., in overall charge of the company's Latin American operations.

He was born in Twin Falls, Idaho. In 1935 he received a Bachelor of Science degree in Civil Engineering from the College of Engineering of the University of Idaho.

Frank has been employed practically all his adult life by Morrison Knudsen having joined the firm in 1936, as a young engineer, shortly after graduation.

In 1950 he moved east to become Chief Engineer of the Central and South American District with offices in New York City. In 1958 he became Assistant District Manager and in 1960 he was elevated to District Manager. It was in 1967 that he was elected Vice President of the firm.

Frank became a member of The Moles in 1956 and shortly thereafter was invited to serve on the Publicity Committee. He was actively participating in Membership Committee work when he was elected a Trustee in 1965. In 1967 he served as Second Vice President and in 1968 was elected First Vice President.

Frank, his wife, Dorothy and two daughters, Martha and Nowell reside at Nash Island, Noroton, Connecticut.

## JOHN J. MURPHY First Vice-President

Jack Murphy received engineering degrees from the University of West Virginia and New York University.

In 1930 he started out as a young engineer in Westchester County working on the State of New York highway system and later became Superintendent.

In the late 1930's he went to work for Walsh Construction Company and was actively engaged on various heavy construction projects which included highways, bridges, dams, tunnels, railroads and sanitary sewers.

In 1955 he was made Vice President and General Manager of that company and in 1965 he was elected President in charge of all their operations a position which he now holds.

Jack received his "25 Year" certificate from The Moles last November having become a member in 1943. He has served on many committees throughout this period. In 1967 he was Chairman of the Award Committee and was

elected Second Vice President in 1968. His son Tom is also a member of The Moles and is employed by Walsh Construction headquartered in Indiana.

Jack and his wife, Laretta reside in Purchase, New York.

## ALFRED H. KORSEN Second Vice-President

Al was born in New York City and has a Civil Engineering Degree from Northeastern University, Boston, Massachusetts.

Shortly after graduation in 1931 he entered the construction field. He joined Slattery Contracting Co. Inc., in 1935 as a field engineer. He was made Superintendent and later General Superintendent. In 1940 he became Chief Engineer and in 1949 Vice President of the company. He was made Executive Vice President in 1961 a position which he now holds.

Al became a member of The Moles in 1952 and has served faithfully and conscientiously in many capacities since 1957. He was first a member of the Membership Committee and later became its Chairman. He has also held the Office of Trustee and most recently served as Chairman of the Award Committee.

Al and his wife, Edna, reside in Englewood, New Jersey.

## LOUIS W. HALL Treasurer

Lou Hall was born in Brooklyn, New York. He received a Civil Engineering Degree from Rensselaer Polytechnic Institute in 1935 and is a Professional Engineer licensed in the State of New York.

After graduation he went to Pensacola, Florida where he became an Aviation Cadet serving with the United States Naval Reserve.

During World War II he served as Executive Officer with the United States Navy's Underwater Demolition Team #5 in the Pacific and was awarded the Silver Star at Saipan.

He entered the employ of Turner Construction Company in 1937 as a Timekeeper and working his way through the ranks became a Vice President in 1962 a position which he now holds.

He became a member of The Moles in 1962 and shortly thereafter was invited to serve on the Education Committee, later serving as its Vice Chair-

man. Lou has served on several "special committees" the Award Committee and the Nominating Committee.

Lou, his wife, Eleanor, and daughter Rosemary reside in Scarsdale, New York.

## REUBEN SAMUELS Secretary

Rube was born in Suffern, New York. He attended Massachusetts Institute of Technology and received a Civil Engineering Degree from Dartmouth College in 1946. He went on to earn his Masters in Soil Mechanics at Harvard University's Graduate School of Engineering.

During the period from 1951 to 1954 he served as doctoral candidate and teaching assistant to Professors Arthur Casagrande and the late Karl Terzaghi at Harvard.

Since that time he has been with the Thomas Crimmins Contracting Company and currently serves as Vice President and Chief Engineer of that firm.

He is a Professional Engineer licensed in the states of New York, New Jersey, Connecticut, Pennsylvania, District of Columbia and Massachusetts.

Rube became a member of The Moles in 1963 and since 1964 has been actively engaged in committee work having served on the Education Committee, the Award Committee and Chairman of the "Special Committee" appointed to re-write the Codes of Procedure. This is his second year to serve as The Moles' Secretary.

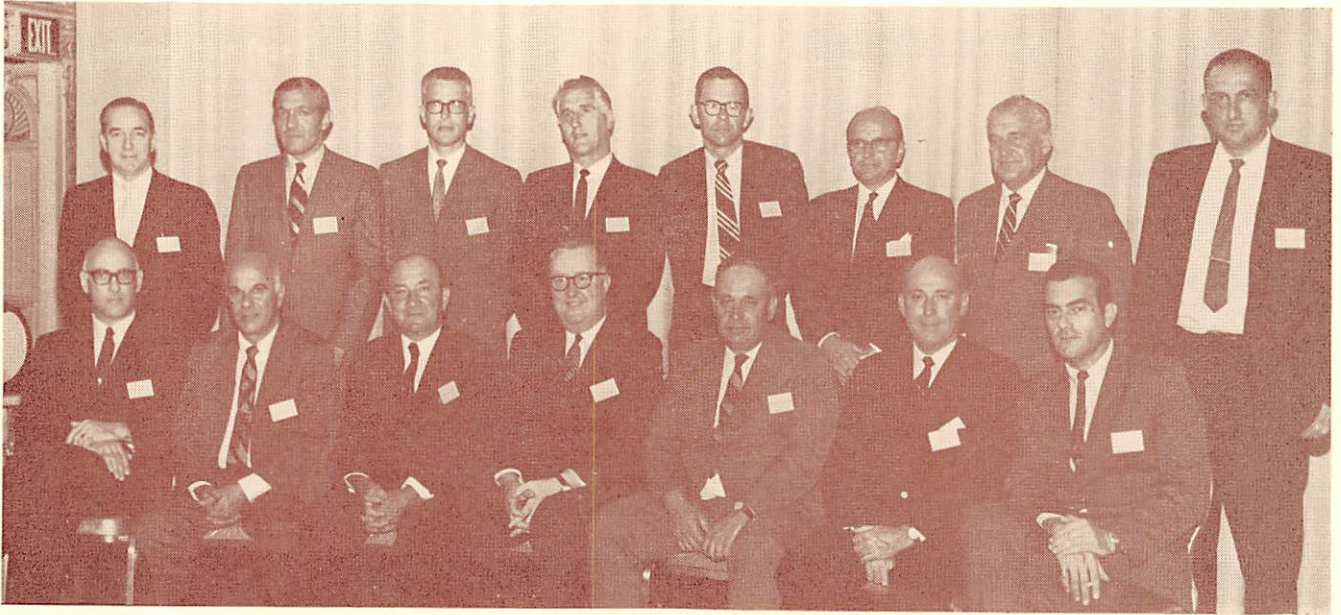
Rube, his wife, Diane, and two children, Adam and Julie, reside in Paramus, New Jersey where he is actively engaged in civic duties.

## EDWARD D. SABIN Sergeant-at-Arms

Ed Sabin is a graduate of Tufts University; a Professional Engineer licensed in the States of New York and Connecticut; and President of Sabin Service and Research Corp., a firm specializing in paving materials. In addition, he is Treasurer of Marine Erosion Control, Inc., a Babylon, N. Y. firm engaged in alleviating beach erosion and shorefront damage problems.

During World War II, Ed took time out from his own paving operations at Stewart Air Force Base in Newburgh and the Warren County Airport in Glens Falls, to serve as Division Construction Superintendent for the Walsh-Driscoll

(Continued on Page 8)



Left to right (standing) Nello L. Teer, Frank Catapano, Thomas Van Houten, John Duffy, Frank Robertson, John Thompson, Lou Hecht and Richard Weeks. (sitting) Douglas Baker, Edmund Kowkabany, Emil V. Pilz, John McFarland, Joseph Cataldo, Robert Marshall, and Jack Balsamo.

## NEW MEMBERS

DOUGLAS D. BAKER, SR., is Senior Vice President of the Vinnell Corporation located at Alhambra, California. In this capacity he controls the management of that company's heavy construction projects which are primarily dam and powerhouse construction.

Doug is a graduate of the University of Michigan where he received a Bachelor of Arts Degree in 1947; and during World War II he served as a Lieutenant, Senior Grade with the United States Naval Air Corps.

Prior to his association with Vinnell he served as Construction Manager for the Tecon Corporation in Dallas, Texas.

He resides in Covina, California, and is a member of The Beavers, and Phi Delta Theta.

JACK BALSAMO succeeds Eugene F. Moran, Jr., who recently retired, as head of the Disposal Division of Moran Towing Corporation of New York City engaged in water transportation of contractors' materials. He is active in seeking new methods to reduce water and air pollution.

Jack is a resident of Staten Island.

JOSEPH C. CATALDO is affiliated with Ingram & Greene, Inc., as their general superintendent specializing in difficult foundations, underpinning sheet piling and excavations.

He graduated from Polytechnic Institute of Brooklyn in 1941; and currently resides at Wantagh, New York.

FRANK CATAPANO is President and General Construction Superintendent of the firm of Andrew Catapano Co., Inc. The firm founded by Frank's father, located in Glendale, New York is engaged in subaqueous sewer construction, roads, tunnels and structures.

Frank graduated from Hofstra College in 1950 and resides in New York City.

He is a member of the Columbus Citizens Committee and the Marymount Association.

KENNETH A. CLARK is Chief Engineer and Vice President of the S. A. Healy Company.

He is a graduate of Massachusetts Institute of Technology where he received a Bachelor of Science Degree in Civil Engineering in 1928.

Mr. Clark is a member of the American Society of Civil Engineers, Tau Beta, and Chi Epsilon.

He currently resides in Montecito, California.

JOHN A. DOWNS is the President of Great Lakes Dredge & Dock Company headquartered in Chicago, Illinois. He has been actively engaged in construction since graduation rising through the ranks to his present position with Great Lakes.

Mr. Downs received a Bachelor of Science Degree in Civil Engineering from the University of New Hampshire in 1937 and his Masters Degree from Massachusetts Institute of Technology in 1938.

He resides at Downers Grove, Illinois.

JOHN J. DUFFY is affiliated with Walsh Construction Company as Field Construction Manager of their Eastern Division. Prior to this he had responsible positions for other prominent construction firms building rock tunnel aqueducts, earth dams, pumping stations, etc.

He attended the Marine Corps School in Quantico, Virginia and is presently a resident of Beacon, New York.

CHARLES R. GRAFF is Senior Vice President in charge of Raymond Concrete Pile Division of Raymond International Inc. Before his transfer to New York, Russ had been in charge of Raymond's operations in California.

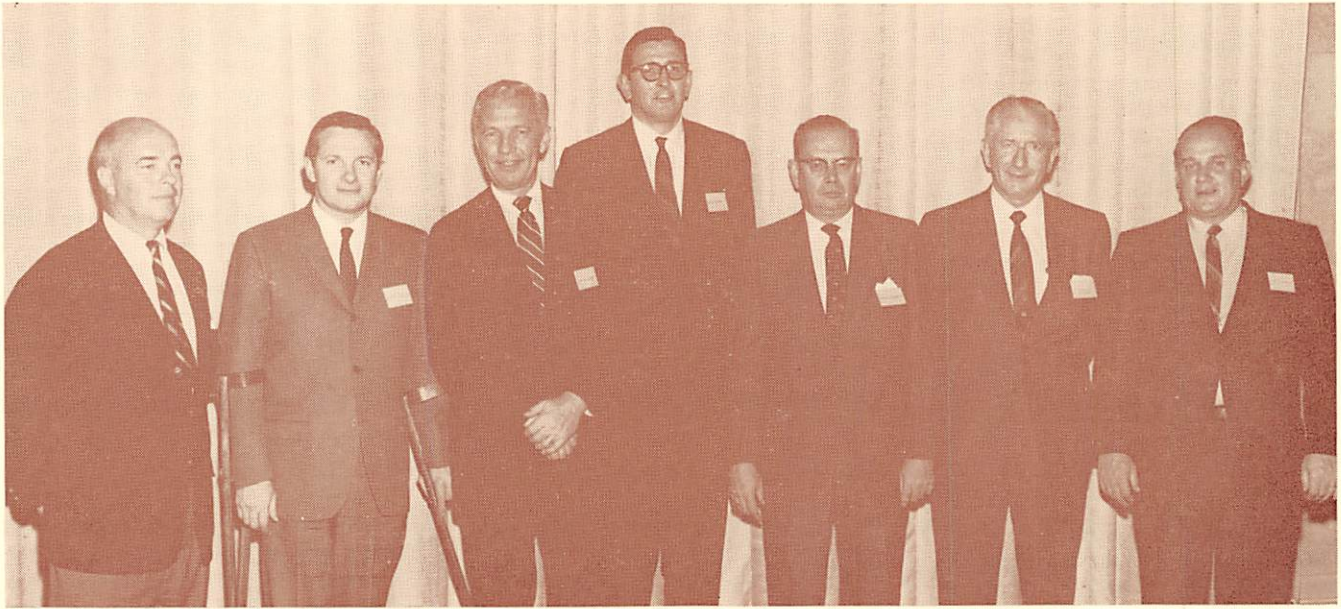
He received a Bachelor of Science Degree in Civil Engineering in 1932 from Harvard.

He is a past President of the Northwest Central California Chapter of the Associated General Contractors and the San Francisco post, Society of American Military Engineers. He is a member of the American Society of Civil Engineers, Structural Engineers Association of California and is a licensed Professional Engineer in the States of Connecticut and California.

Russ resides in New York City.

THOMAS B. HEALY is the President of S. A. Healy Company headquartered in McCook, Illinois and primarily engaged in heavy construction of all phases. He is the son of Mole Member

(Continued on Next Page)



Left to right — Innis O'Rourke, Jr., Joseph Kellogg, Charles R. Graff, Guy Simoni, John Laughlin, Gerald T. McCarthy, and James E. Reilly.

Stephen A. Healy, founder of the company.

Tom attended the University of Illinois and resides in Hinsdale, Illinois.

LOUIS G. HECHT is President of Tri-Delta Construction Corporation located in West Seneca, New York. The firm engages in the construction of bridges, highways, airports, foundations and sewers.

Prior to this he was a Director, Vice President and District Manager of the Buffalo Division of Johnson, Drake & Piper, Inc.

Lou has been engaged in construction all of his adult life. He has a Bachelor of Science Degree in Civil Engineering from Manhattan College which he earned in 1940.

He resides at Orchard Park, N. Y.

JOSEPH C. KELLOGG is Vice President and Manager of the Western Division of the Al Johnson Construction Company. In this capacity he is responsible for estimating, engineering and contract administration of heavy engineered type construction. Mr. Kellogg is a member of numerous technical and professional societies. He has also served in community and civic activities.

Joe was recently selected as "man of the month" by the Executive Committee of the American Society of Civil Engineers, Construction Division.

He received a Bachelor of Science Degree in Civil Engineering from the University of Minnesota in 1951 and also studied structural engineering and business administration.

JOHN W. KINNEY is resident engineer on the Newport suspension bridge across Narragansett Bay at Newport, Rhode Island, for Parsons, Brinckerhoff, Quade & Douglas. Mr. Kinney was employed by Ammann & Whitney as resident engineer during the construction of the Verrazzano Narrows Bridge.

He has a Mechanical Engineering Degree from Stevens Institute of Technology which he earned in 1925.

Jack's home is in Weehawken, New Jersey.

EDMUND M. KOWKABANY is the President of Burns & Roe Construction Corporation with offices in Paramus, New Jersey. This concern designs and supervises the construction of generating stations, desalting plants and the like all over the world.

He has a Mechanical Engineering Degree from Polytechnic Institute of Brooklyn and a degree in Business Administration from Johns Hopkins University.

Ed is a member of the American Society of Mechanical Engineers, American Society of Civil Engineers and the Society of American Military Engineers.

He resides at Franklin Lakes, New Jersey.

JOHN R. KRINGEL is President and Chief Executive Officer of the Lone Star Cement Corporation supplying cement, concrete, construction aggregates and concrete products to the heavy construction industry.

He attended the University of Colorado and is a member of the American Mining Congress, Portland Cement Association, Newcomen Society of North America, Marine Historical Society and International Oceanographic Foundation.

Mr. Kringel resides in Westport, Connecticut.

GEORGE H. LANGENFELDER is President of C. J. Langenfelder & Son, Inc., headquartered in Baltimore, Maryland. The firm has been the prime contractor of many multi-million dollar highway, airport, dam, tunnel and other heavy construction projects.

He is also President of Rockville Crushed Stone, Inc. and Chairman of the Board of John F. Scott Company. In addition he serves on the Board of Equitable Trust Company and is a member of the Maryland State Aviation Commission. He is a member of the Maryland Highway Contractors Association, Society of American Military Engineers, American Road Builders Association and the Associated General Contractors.

He currently resides at Long Fields Farm in Kingsville, Maryland.

JOHN E. LAUGHLIN is Vice President of Operations, Heavy Construction Division, Raymond International Inc. In this capacity he is responsible for both their foreign and domestic work.

Jack has spent his life in heavy con-

(Continued on Page 6)

## NEW MEMBERS

(Continued from Page 5)

struction and a major portion of it in overseas construction. He has occupied many important managerial positions with Raymond and has been responsible for much of their overseas construction.

He attended New York University and resides at Ridgefield, Connecticut.

ROBERT P. MARSHALL, JR. is Vice President and General Manager of the Philadelphia office of Turner Construction Company. During his long career with Turner he has had a hand in most every type of construction and has risen from field engineer to his present position.

He has a Bachelor of Science Degree in Civil Engineering from the University of Pennsylvania. During World War II he was a member of the Underwater Demolition Team #3 and served three years in the Pacific. Bob is presently a Commander in the U. S. Naval Reserve.

He is a member of the American Society of Civil Engineers and the Society of American Military Engineers. He resides at Norbeth, Pennsylvania.

GERALD T. McCARTHY is Senior Partner for the consulting engineering firm of Tippetts-Abbett-McCarthy-Stratton. In this capacity he is consultant in engineering and architectural planning, design and supervision of construction including ports, airports, highways, railroads, subways, dams, water supply, sewerage, irrigation, drainage and flood control.

Mr. McCarthy graduated Magna Cum Laude with a Bachelor of Science Degree in Civil Engineering from Pennsylvania State University in 1930.

He is the President of the International Commission on Large Dams (ICOLD); a past President of the American Institute of Consulting Engineers and a Director of the U. S. National Committee of the International Commission on Irrigation. He is a member of numerous technical societies and is a Knight of the Holy Sepulchre, a papal order. He resides in Summit, New Jersey.

JOHN A. McFARLAND is Executive Vice President of McFarland-Johnson Engineers, Inc. Prior to 1962 he was in charge of the supervision of construction for Blauvelt Engineering Co. Mr. McFarland is currently doing extensive work in New Jersey and most recently

joint ventured on the design and construction of the Atlantic City Expressway.

He attended Willard Fillmore College, the University of Buffalo and the Engineer School at Fort Belvoir, Virginia.

Mr. McFarland is a member of the American Road Builders Association, American Congress on Surveying & Mapping, Society of American Military Engineers and an associate member of the Association of Highway Officials of the Northern Atlantic States.

He currently resides in Woodbury, New Jersey.

AUGUSTUS M. MINTON, Maj. Gen., U.S.A.F. (Ret.) is now the Executive Vice President and a member of the Board of Directors of the engineering and construction firm of Day & Zimmermann, Inc., of Philadelphia. This concern designs and constructs chemical process plants, automated warehousing, heavy automated and mechanized industrial facilities.

During the period from 1957 to 1963 he was in charge of engineering and construction as Director of Civil Engineering for the United States Air Force. In this capacity he occupied a seat on The Moles' dais at several Award Dinners.

General Minton received a Bachelor of Science Degree from the University of Illinois in 1946 and an MBA from Harvard Graduate School of Business in 1949.

He is a member of numerous technical and professional societies and a Professional Engineer licensed in Washington, D. C.

He resides in Ardmore, Pennsylvania.

INNIS O'ROURKE, JR., is President of Precast Inc. - Prefabricated Cone Inc. located in Flushing, N. Y., supplying precast and prestressed concrete to the heavy construction industry for architectural and structural sites, including piles and beams.

He received a B.A. degree from Yale University in 1943.

Innis' father has been a Mole member since 1941 and was elected a Member Emeritus this past year.

WILLIAM C. PECKHAM is Executive Vice President of Peckham Industries, Inc., of White Plains, New York.

This firm is engaged in utility construction, including gas lines and electrical conduits, the construction of interstate highways and parkways and the manufacture of allied materials for the construction industry.

Bill has a Bachelor of Science Degree in Civil Engineering from Brown University which he received in 1950.

He is a Vice President of the Associated General Contractors of America, New York State Chapter and a member of the Board of Directors for the National Crushed Stone Association.

He resides in White Plains, New York.

EMIL V. PILZ is Senior Partner in the law firm of Jarvis & Pilz serving the construction industry for many years as counsel to some of its leading contractors and engineering firms.

Mr. Pilz attended Brooklyn Law School of the St. Lawrence University.

He is a member of the Society of American Military Engineers, New York County Lawyers, New York State Bar and American Bar Associations, Brooklyn-Manhattan Trial Counsel Association and the New York Law Institute.

He resides in Ridgewood, New Jersey.

JAMES E. REILLY is a Special Representative for Worthington Corporation soliciting heavy construction equipment, sales and rentals, aiding contractors on their various requirements. For 20 years he has been connected with the heavy construction industry in one capacity or other either as a contractor with his own business and later as an equipment supplier.

Mr. Reilly attended New York University.

He resides in East Islip, New York.

FRANK P. ROBERTSON is the Eastern District Manager of Morrison-Knudsen Company, Inc. with offices located in Darien, Connecticut. He has been employed by M-K on various important construction projects since his graduation from Cornell University in 1952, where he earned a Civil Engineering Degree. His early years were spent in Boise gaining basic engineering and estimating experience after which he was assigned added responsibilities among which were Project Manager on the construction of the Vertical Assembly Building at Cape Kennedy.

He resides in Westport, Connecticut.

## NEW MEMBERS

(Continued from Page 6)

EDWARD J. SHERIDAN Deputy Assistant Secretary of Defense (Installations and Housing) manages the Department of Defense annual world-wide military construction program. Prior to 1961 he was Director of Construction in this Department and earlier served with the Corps of Engineers.

He attended Fordham University from 1929 to 1932 and holds a degree from Canisius College which he earned in 1933.

He is a resident of Alexandria, Virginia.

GUY SIMONI, Vice President of MacLean Grove & Company Incorporated started in the field as a young engineer shortly after graduating from Rensselaer Polytechnic Institute, where he earned a Civil Engineering Degree. He has worked his way up through the ranks to his present position with the company. Currently Guy is Construction Manager on this company's work on the San Francisco Bay Area Rapid Transit District Subway work. He has extensive experience on construction of subaqueous compressed and free air tunnels and subway work.

He resides in Englewood, New Jersey.

NELLO L. TEER, JR. is President of Nello L. Teer Company of Durham, North Carolina.

A native of North Carolina he graduated from the University of North Carolina in 1936. In 1968 this University honored him with an Honorary Doctor of Science Degree.

He served two terms as President of American Road Builders' Association and two terms as President of the Contractors Division. He is very active on important policy making committees of the Associated General Contractors of America and was appointed Honorary Life Director of AGC in 1968. He served as President of the North Carolina Engineering Foundation and is a Founding Director of Better Highways Information Foundation.

He is a resident of Durham, North Carolina.

JOHN W. THOMPSON is President of McDowell Wellman Engineering Company, engineers, manufacturers and constructors headquartered in Cleveland, Ohio.

He graduated in 1949 from Ohio Wesleyan University where he received a B.A., and continued on with graduate work at the Western Reserve University and John Marshall Law School.

Mr. Thompson resides in Gates Mills,

THOMAS G. VAN HOUTEN is at the present time Project Manager on the construction of a containership terminal at Stapleton, Staten Island, N. Y., employed by Transocean Gateway Corp. Prior to this he worked for Peter Kiewit Sons' Co. in the New Jersey office and J. Rich Steers, Inc.

Tom has a Bachelor of Architectural Engineering Degree which he received in 1953 from Catholic University of America and a Bachelor of Arts Degree which he received in 1948 from Seton Hall University.

Except for two years service with the United States Army Tom has spent all his life in construction having worked during school vacations on various construction projects and continuing on full time after graduation being assigned each year to more responsible positions.

His father Leonard and brother, Leonard E. are both Mole members.

He resides in Ridgewood, New Jersey.

RICHARD N. WEEKS is President of Weeks Dredging and Contracting Inc., of Elizabeth, New Jersey. This firm is currently doing marine work in the Mid-Atlantic and New England States.

Mr. Weeks is a graduate of Rutgers University where he earned a Bachelor of Science degree in 1950.

He is a resident of Mountainside, New Jersey.

ROBERT G. WILLIAMS is a Project Manager for Gates Construction Corp., in Little Ferry, New Jersey. Prior to this he was employed by Cayuga Construction Corporation.

He received a Bachelor of Civil Engineering Degree from Villanova University in 1958 and did post graduate work at Columbia University, Cooper Union and City College of New York.

He resides in Great Neck, New York.

## DRUDING CITED



Mole Member, Henry A. Druding received the Port Authority's Distinguished Service Medal on June 12th. Mr. Druding has supervised the construction of a number of the agency's major projects among which are: the laying of the foundations for World Trade Center and building the George Washington Bridge's lower level and the Lincoln Tunnel's third tube.

He retired June 20th after over thirty years of distinguished service with the Port. More than 300 long-time Port Authority and construction industry associates honored him at a testimonial dinner in New York on June 10th.

He received the bi-state agency's highest award for his "dedication, initiative and competence in engineering supervision".

Harry, as he is known to his many friends, joins a select group of only seven previous holders of the medal, which was established in 1957 in honor of Howard S. Cullman, honorary chairman.

The substructure work on the 70-foot-deep foundations for The World Trade Center's two 110-story tower buildings, tallest in the world, is now virtually completed. Mr. Druding's assignment with the Port on this job was as Senior Resident Engineer.

The New Jersey Society of Professional Engineers cited him in 1960 for their State's Engineer of the Year Award, at the peak of construction activity for the George Washington Bridge second deck. At that time they said:

(Continued on Page 8)

## EDWARD D. SABIN

(Continued from Page 3)

team in Trinidad, British Guiana and Dutch Guiana.

Ed has acted as a Consulting Engineer to New York City, Triborough Bridge and Tunnel Authority, and the Borough of Manhattan when unusual paving problems existed. Some of the jobs included the Verrazano-Narrows Bridge, the Throgs Neck Bridge, Queens Mid-Town Tunnel Plaza and the Belmont Park Race Track.

In Connecticut he has acted as Arbitrator, representing the Highway Commissioner, in State-Town Highway Proceedings and has also been an examiner of candidates for highway engineering titles in the State Civil Service. He is one of the fifteen recipients of the H. Jackson Tippet Award of Merit given by the Connecticut Society of Civil Engineers during its eighty-four years of existence. He is a Director and former President of the Candlewood Lake Club Association of Brookfield, Connecticut where he has maintained a summer residence for over twenty years.

He is a Life Member of the Tufts Alumni Council, a former member of its Executive Committee and a recipient of the Distinguished Alumni Award. He is also a member of Tau Beta Pi, the National Honorary Engineering Fraternity and numerous technical and professional organizations. He became a member of The Moles in 1949 and has served on several committees.

Ed resides in Jamaica Estates, New York.

## HENRY A. DRUDING

(Continued from Page 7)

"Mr. Druding is held in high esteem by both the contractors whose work he supervises and his fellow engineers in the Port Authority for his competence and fairness, as well as his resourcefulness and determination in surmounting the most difficult technical problems under the pressure of critical construction schedules".

Harry became a member of The Moles in 1956 and since has served prominently many times on Students' Day programs when the Day's tour included a Port Authority project.



Arnold Thurber receives Past Treasurer's Certificate from retiring President Howard Gould at the Annual Business Meeting.

## ANNUAL MEETING

(Continued from Page 2)

Before adjournment of the meeting, President Peavey expressed regrets that Ralph Atwater was unable to attend the meeting but that he had sent a message to his fellow Moles which Past President, John J. Walsh would read.

Jack said that he had been most happy and proud when he received a phone call this morning from Mrs. Gallagher requesting that he read Ralph's message at the meeting. He said he never expected the occasion to arise where he would be standing at the lectern speaking at a Members' Dinner again after having served as The Moles' President during 1964 but that he was indeed honored to have been chosen to read the words of The Moles' Honorary Life President, Ralph Atwater.

### MESSAGE FROM RALPH ATWATER

"Fellow Moles; 32 years ago, I attended a meeting of The Moles and was elected a member. Since I was Member #17, the meeting was much smaller than this one and was held in much less pretentious circumstances.

During the intervening years, great changes have taken place in the world and in The Moles.

*Tonight, I regret seeing Howard Gould step down as our President. During the many years he has served as a Committee Man, Committee Chairman, Trustee, Award Chairman and finally President, he has been instrumental in bringing about many significant and far-reaching improvements in The Moles. He has been a great President and fortunately will continue as a member of the Executive Committee for another three years.*

*Tonight, I welcome our new President, Frank Peavey. He is a real construction man and The Moles are fortunate that they can have men of his stature as their President. I predict a brilliant and successful year for him.*

*Remote as it may seem, some of the younger members here tonight will greet the year, Two Thousand. Though it is impossible to conceive the changes which will occur in the world and in The Moles during the coming years, one thing I am sure of — The Moles will be here and will continue to prosper.*

*Our Member Emeritus Program is perhaps the most important innovation which has taken place in recent years and through it the vigor and youth of the Association is continuing. — Paraphrasing General MacArthur's remark — 'Old Moles never die, they just become Members Emeritus and gracefully fade away'."*



## COMMITTEES, 1969-70

President FRANK H. PEAVEY has appointed the following persons to serve on the five standing committees for The Moles' year 1969/70.

**MEMBERSHIP** — DANIEL M. LAZAR, President of Cayuga Construction Corporation, serves as Chairman and RICHARD A. TOWER, General Manager of Construction, J. Rich Steers, Inc., is Vice Chairman. Other members of the Committee are: EUGENE F. GIBBONS, McFarland Johnson Engineers, Inc.; ROBERT R. HELEN, Raymond International Inc.; EDWIN L. JONES, Jr., J. A. Jones Construction Company Inc.; PHILIP S. MILLER, Mohawk Constructors Inc.; RICHARD Q. PRAEGER, Madigan-Hyland Inc. and Praeger-Kavanagh-Waterbury; GERARD D. SARNO, Bethlehem Steel Corporation; and DAVID A. WERBLIN, Griffin Wellpoint Corporation.

**PROGRAM** — ELWOOD P. VROOME, Vice President of J. C. MacElroy Company, Inc., is serving as Chairman assisted by G. R. (Bud) GRAY, Vice President of S. J. Groves & Sons Company, serving as Vice Chairman. Other members of the Committee are: JAMES C. ARMITAGE, Armitage & Company, Inc.; LOUIS G. COAKLEY, Thomas Crimmins Contracting Company; ARTEMAS H. (Tony) CRIMMINS, Jr., Thomas Crimmins Contracting Company; JOSEPH A. DOOLEY, New York Trap Rock Corporation; CHARLES W. EDGAR, Walsh Construction Company; ROBERT M. HIENER, Walsh Construction Company; MICHAEL J. UCCI, Clyde Iron Works.

**FINANCE** — EDWARD E. WHITE, President of Spencer, White & Prentis, Inc., is Chairman. Others serving on the Committee are: WILLIAM D. ALEXANDER, Seelye, Stevenson, Value & Knecht; HENRY F. LEMIEUX, Raymond International Inc.; NORMAN NADEL, MacLean Grove & Company Inc; and LEONARD E. VAN HOUTEN, Van Houten Associates.

**PUBLICITY** — FRANCIS A. VILOLO, President of Corbetta Construction Company, serves his second year as Chairman assisted once again by ALLEN D. FISCHBACH, Vice Chairman of the Board of Fischbach & Moore, Inc. Other members are: W. J. (Joe) GREEN, S. J. Groves & Sons Company; DONALD L. HENSLEY, Penn Dixie Cement Corporation; SIDNEY A. HOUCK, Jr., MacLean, Grove, Shephard, Wilson & Kruge, Inc.; and WILLIAM R. HUBBLE, Hercules Inc.

**EDUCATION** — GARDNER M. BISHOP, President of Gardner M. Bishop, Inc., serves his third year as Chairman assisted this year by MARTIN S. KAPP, Soils Engineer of The Port of New York Authority as Vice Chairman. Other members of the Committee are: MELVIN FEBESH, Spencer, White & Prentis, Inc.; GERARD F. FOX, Howard, Needles, Tammen & Bergendoff; ROBERT C. KOCH, J. Rich Steers, Inc.; STANLEY MERJAN, Underpinning & Foundation Company Inc.; and HERBERT WASSERMAN, Slattery Contracting Co., Inc.

## 1969 CLAMBAKE

(Continued from Page 1)

price of the Clambake ticket. Locker room space is available to change so take advantage of this opportunity and bring your swim trunks.

Registration starts at 11 a.m. on the porch of the Clubhouse. There you will be greeted, checked in, given your Clambake caps, and I.D. badges. From there you can go on and have yourself a ball.

Buffet luncheon will be served from 11:30 a.m. to 2:00 p.m.

Outdoor activities which include: Bocci, Golf Pitching, Golf Putting, Spike Driving and Horseshoes will take place during the afternoon from 1 to 5 and prizes will be distributed to the winners immediately after the service of dinner.

Throughout the day, beer will be served free at convenient locations on the grounds and at lunch and dinner. Bars will be open for other refreshments on an a la carte basis.

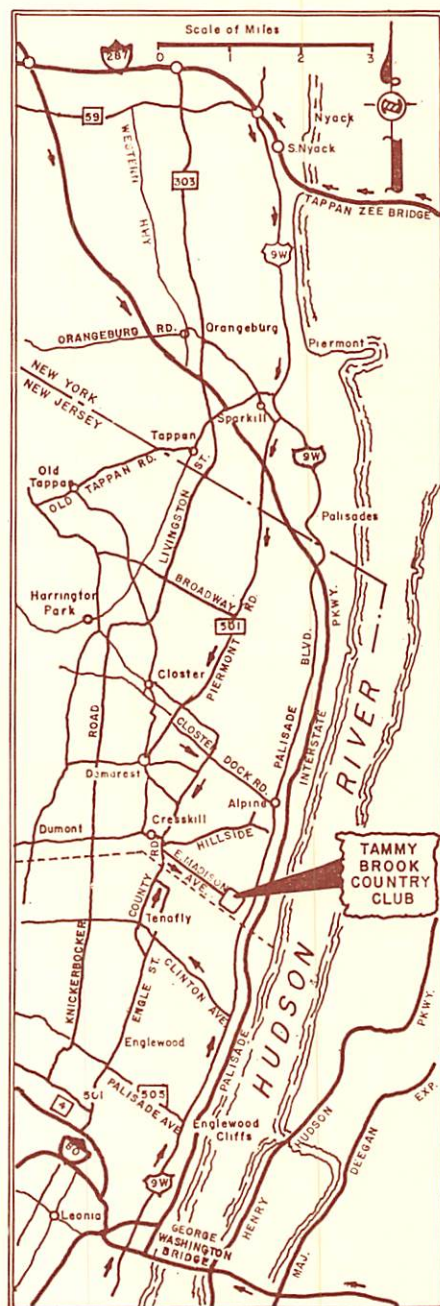
The traditional softball game between The Moles and the Department of Public Works will be held at 2 p.m. If the D.P.W. wins the game this year, the President's Cup will be given to the Commissioner that evening and will be permanently placed in the Trophy Case in his office. If The Moles win the game this year, the series will be tied at 4 all and the winner of the 1970 game will have permanent possession of the trophy. So-oo- come on out and cheer your team.

While golf is not included in the price of the tickets, the private 18 hole golf course will again be made available that day for the exclusive use of Moles and their guests. The fees, paid on a

(Continued on Page 12)

## DIRECTIONS TO TAMMY BROOK

From the New Jersey end of George Washington Bridge, follow Route 9W north to Clinton Avenue to County Road (Tenafly) to East Madison Avenue (Cresskill) turn right to Club. From New Jersey end of Tappan Zee Bridge, follow Route 9W south or Interstate Parkway to Alpine — Hillside Avenue to County Road (Cresskill) turn left at East Madison Avenue to Club.



*The 1970*

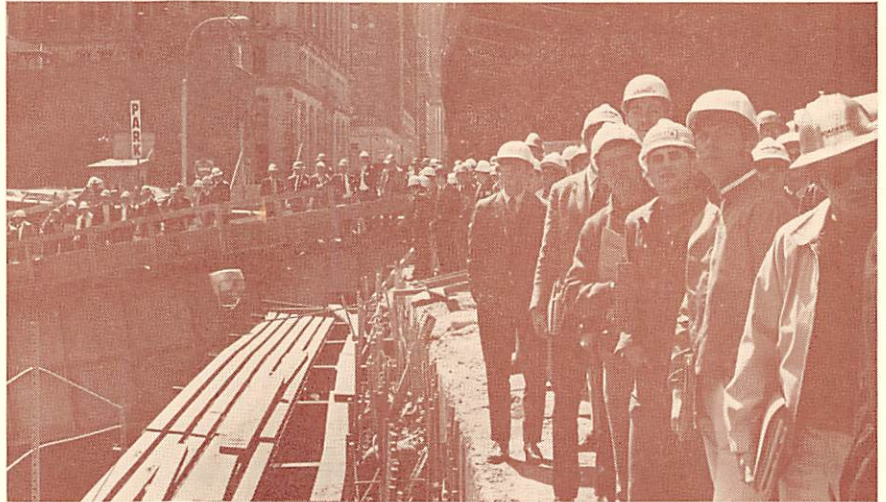
*Award Dinner*

Will be held at the

*New York Hilton*

January 28th.

## STUDENTS DAY



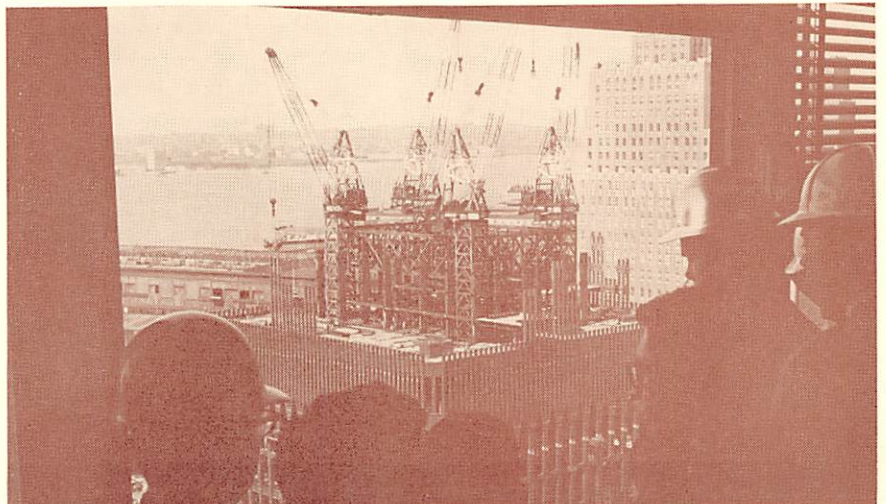
Students view North Tower from under Westside Highway at World Trade Center.

### *CARL L. SWENSON, SR., Dies*

As we go to press, we received the sad news that CARL L. SWENSON, SR., died on June 17th at Northern Westchester Hospital after suffering a heart attack.

Mr. Swenson was Chairman of the Board of Foley Brothers, Inc., a construction and engineering firm with headquarters in Pleasantville, New York.

It is our hope to write a complete obituary for our next issue of *Holing Through*.



Students view World Trade Center site from window of Port Authority's Observation Room on 17th floor. View shows one of the Twin Towers.

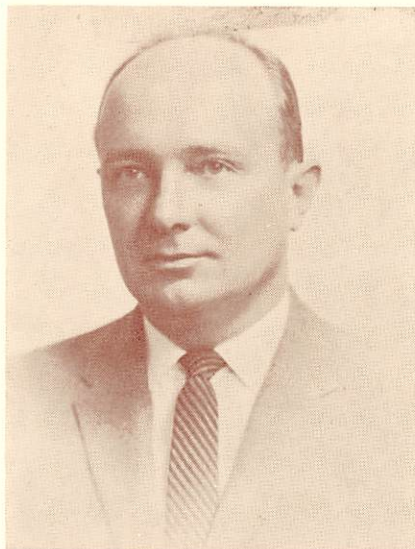
The photographs of Students' Day appearing on pages 10 and 12 illustrate the importance of the "hard hats" that many of our affiliated contractors donate each year. The Moles and the students from the several engineering Colleges participating in this annual field day, extend their thanks and appreciation to all these concerns who respond so generously each year to our appeal.

Photographs were reproduced in this issue, through the courtesy of The Port of New York Authority, A. Belva, photographer.



HARRY DRUDING addresses students from south east end of World Trade Center site. View shows slurry wall with tie-backs and trestle for PATH Tube in background.

## • • • A Moment of Silence • • •



HOWARD W. HOLMES, President of Charles A. Maguire & Associates International, died at his home on April 9, 1969. He was 47.

Mr. Holmes was a native of Providence, Rhode Island; graduated from Brown University in 1943 with a Bachelor of Science degree in civil engineering.

After graduation he served as a communications officer on the Marblehead during World War II until 1945.

He joined Maguire Associates in 1949 and became a partner in 1953. In 1960 he was made a senior partner and was elected President and Chairman of the Board when the firm incorporated this year.

Mr. Holmes was responsible for the firm's operations including offices in Boston and Wethersfield, Connecticut. He was in charge of many major highway projects in New England including Routes 95, 295 and 37 in Rhode Island.

In Massachusetts, he worked on the Massachusetts Turnpike, the inner belt study, Interstate 91 at Springfield, the Worcester Expressway and Interstate 93. In Connecticut projects under his direction included Interstate 84, the Bulkeley Bridge, Interstate 91 and the Danielson Connector.

Mr. Holmes was a Knight of Malta and of the Equestrian Order of the Holy Sepulchre of Jerusalem. He was first vice president of the Friendly Sons of St. Patrick and a member of the Clover Club of Boston, the Holy Name Society

(Continued )



LAMBERT T. O'NEILL died of cancer at Doctors Hospital in Staten Island on April 10, 1969. He was 75.

Larry was a native of Rosebank and a lifelong resident of Staten Island.

Before his retirement a few years ago, he was general construction superintendent for Poirier & McLane Corporation. He had been with them for 35 years.

A few of the projects under his direction were: work on the Triborough Bridge; sections of the West Side and FDR Drives; the Great Kills and Annadale overpasses for the SIRT; and sections of the Garden State Parkway and New Jersey Turnpike.

A few years ago after his retirement from P & M he was called in by Dr. Peter Timpone, Sr., as co-ordinator for construction on the Doctors Hospital which was being built at that time in Staten Island.

Larry was a life member of the Staten Island Lodge B.P.O. Elks.

He is survived by his wife, Marthe, two sons, a daughter, a sister, and eleven grandchildren.

of St. Sebastian's Church and served on the special gifts committee of the Catholic Charity Fund. He was a member of many professional societies including the American Society of Civil Engineers, the Society of American Military Engineers, the national and Rhode Island Societies of Professional Engineers and the Consulting Engineers Council.

He is survived by his wife, Elizabeth, his father James F., two sons, four daughters and a sister.



ROBERT W. GOODMAN, President of Grow Construction Co., Inc., died suddenly on May 20, 1969. He was 54.

Mr. Goodman attended Cornell University where he earned a Bachelor of Arts Degree in 1935 and a Civil Engineering Degree in 1939.

For several years after graduation, he built houses in Queens, and during World War II he designed and built large whirler cranes used in ship repair for the United States Navy.

In 1945 he joined the Grow Construction Co., Inc. founded that year by his father, Charles, a leading subway contractor, and became President on his father's death in 1963. This firm has developed into one of the leading local contractors specializing in compressed air tunnel work and bridge structures.

Under Mr. Goodman's direction, the firm has performed work on the four level interchange in Queens, the Kew Gardens interchange, all of the compressed air tunnel work in the new Brooklyn and lower Manhattan interceptor sewer systems, and bridges crossing the Mohawk, Delaware and Black Rivers.

He was President of Pacifica Foundation; and a Trustee of the Walden School for many years. He also served as Trustee for the Compressed Air and Tunnel Workers Welfare and Pension Trusts.

He is survived by his widow, the former Carolyn Elizabeth Drucker; two sons, his mother, three sisters and a brother. His son, Andrew, was one of three civil rights workers killed in Mississippi in 1964.

## MOLES . . . . here and there

• CHARLES STILLMAN, President of Linde-Griffith Construction Company in Newark, N. J., has recently been elected to serve as Alumni President for The Cooper Union.

• GEORGE W. ROGERS, Chairman of the Geo. W. Rogers Construction Corporation of New York City has been granted a patent recently for an "ice velocipede." George invented the contraption in the machine shop of his summer home in Easton, Connecticut and has assigned the patent to Goodwill Industries of Western Connecticut, Inc., who are negotiating with a bicycle manufacturer for production on a royalty basis.

• Regrettably absent from the May Dinner were: RUBE SAMUELS, ED WHITE and SAL DeSIMONE — reason for this was they were all giving important talks at the Met. Section of the Foundations and Soil Mechanics Group of the American Society of Civil Engineers that evening.

### 1969 CLAMBAKE

(Continued from Page 9)

cash basis directly to the Club are: Green Fees \$7.00 per person, Caddy Fee \$7.00 per bag for 18 holes, Locker Room Attendant \$1.00, Golf Carts \$10.00 plus 3% State Tax. Prizes will be awarded that evening for the "Longest Drive" and "Closest to the Hole".

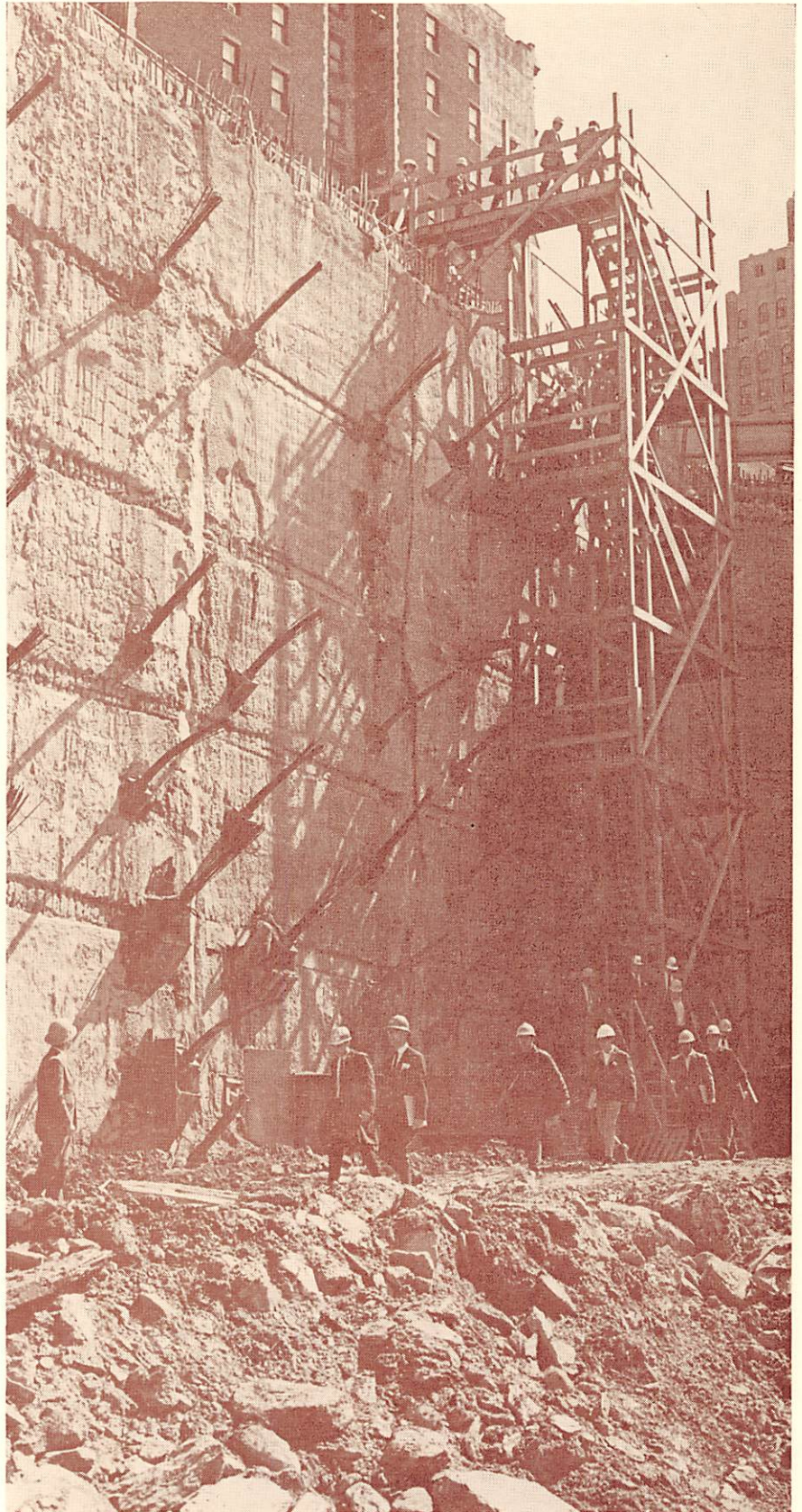
Starting times for golf will be 7:30 a.m. to 9:30 a.m. and 12 noon to 2:30 p.m.

Golf will be under the control of the Caddy Master Bill Ventura. Telephone him at (201) 567-6648 or 6691 for starting time and other details.

After the traditional Shore Dinner at 8:30 p.m. a variety show will be staged in the ballroom. The Program Committee tells us they have secured The Moles' favorite comedian, Jimmy Joyce. Of course there will be the usual bevy of girls and some real good music.

Invite your guest today to come on out and spend the day at Tammy Brook at The Moles' Annual Clambake — Monday, August 11th. Even if you don't swim, play golf, or participate in the outdoor games, there will be ample room for card games or just renewing old acquaintances and perhaps developing some new ones.

## Students With Hard Hats



Students enter World Trade Center site from staircase on south east corner. View shows closeup of slurry wall and tie-backs.